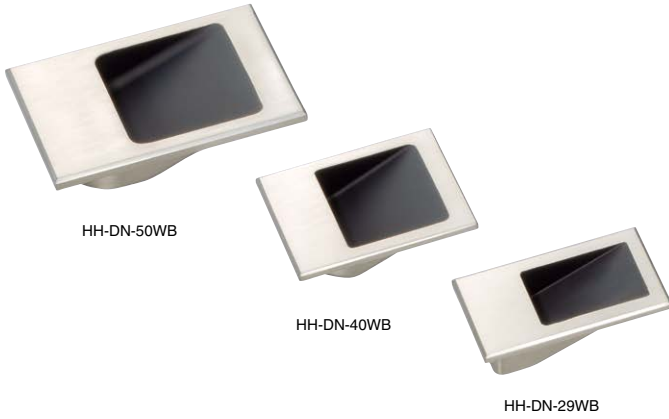


RECESSED PULL HH-DN (Previous Name: 5103)



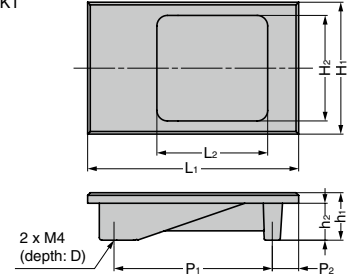
- Small flush pull handle made of metal.
- A new smaller size type is added to the lineup.
The new HH-DN-29WB perfectly fits one finger.
- Can also be used on sheet metal when using with HH-DN-BKT bracket.

[Parts Included]

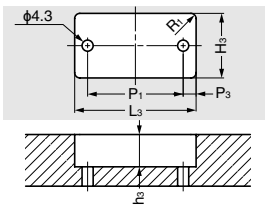
- Countersunk truss head screw M4 x 12 (for wood installation)

[Optional Parts]

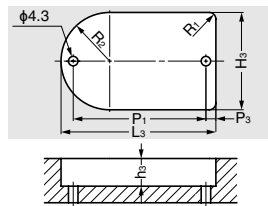
- Bracket for Sheet Metal HH-DN-BKT



[Installation on Wood]

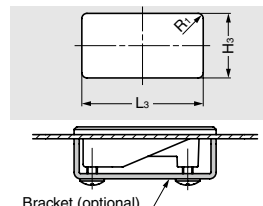


HH-DN-29WB / HH-DN-40WB

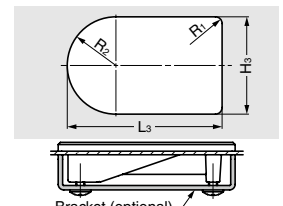


HH-DN-50WB

[Installation on Sheet Metal]



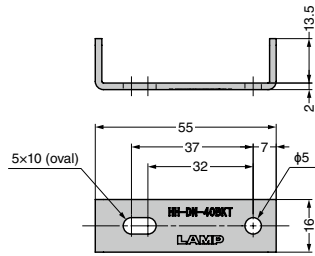
HH-DN-29WB / HH-DN-40WB



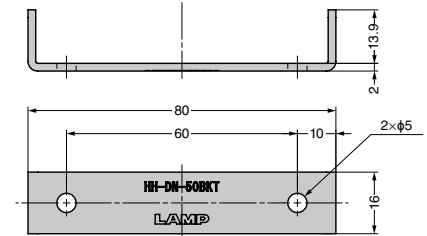
HH-DN-50WB

RoHS	CAD	Item Code	Item Name	Old Name	Material	Finish	L ₁	L ₂	H ₁	H ₂	h ₁	h ₂	P ₁	P ₂	D	L ₃	H ₃	P ₃	R ₁	R ₂	h ₃	Weight (g)	Box (pcs)	Carton (pcs)
●	●	100-049-509	HH-DN-29WB	-	Zinc Alloy (ZDC)	White	55	32	29	20	15.5	12.5	37	11	8.5	47	25	4	2	-	12.5	50	40	160
●	●	100-014-085	HH-DN-40WB	5103-55		Bronze	80	42	50	40	18	14	60	10	5	70	44	4.5	3	22	14	85	20	80
●	●	100-014-084	HH-DN-50WB	5103-80																				

Bracket for Sheet Metal HH-DN-BKT



HH-DN-40BKT



HH-DN-50BKT

[Parts Included]

- Cross-recessed truss head screw M4 x 10

RoHS	CAD	Item Code	Item Name	Material	Finish	Available Pull	Available Thickness	Weight (g)	Box (pcs)	Carton (pcs)
●	●	100-049-510	HH-DN-40BKT	Steel	Coloured Chromate (trivalent)	HH-DN-29WB / HH-DN-40WB	0.8 - 2.3	19	40	160
●	●	100-049-511	HH-DN-50BKT			HH-DN-50WB	0.8 - 3.2	26	40	160