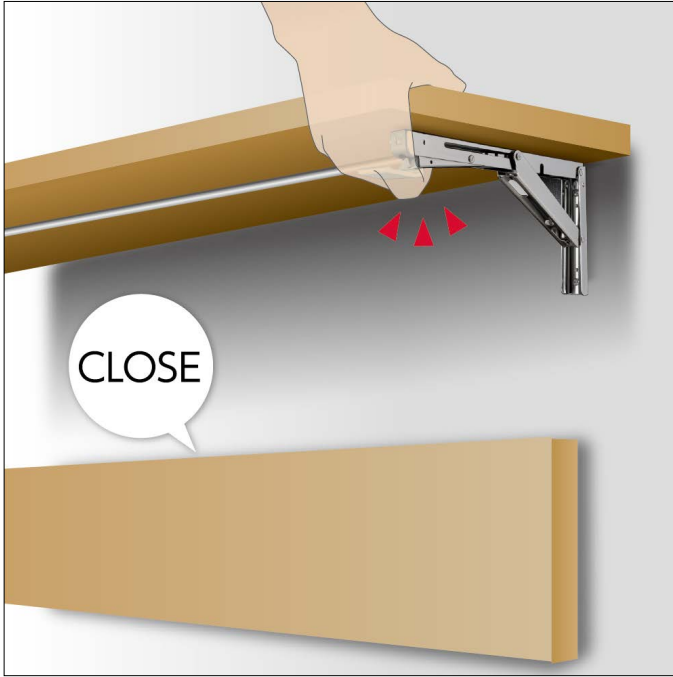


**INTERLOCK LEVER EB-90** For EB-DA and EB-F / For Wide Shelf

INSTRUCTION



Used with the folding brackets.

- Multiple levers allow for one-handed operation.
- Can be used with the EB-DA **1** and EB-F **2** (folding brackets).
- Ideal for use on wide shelves.
- The rod can be cut to desired length.

**[Remarks]**

- If the rod is used with a length of 700 mm or more, please install the included additional mounting plate on the middle of the rod to prevent warping.
- When folding/unfolding the brackets, please hold both the shelf and brackets with your hands.

**[Components]**

- For 3 brackets



- For 2 brackets



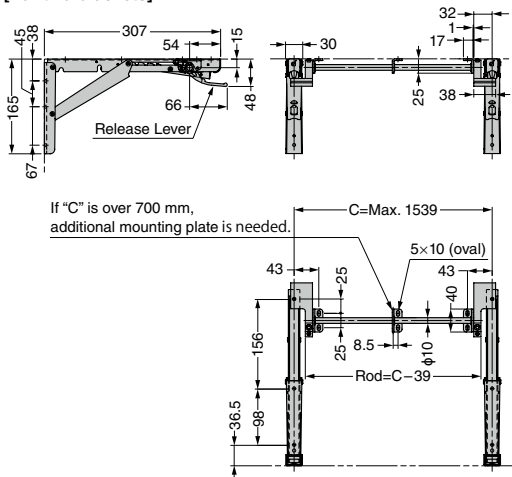
- Rod



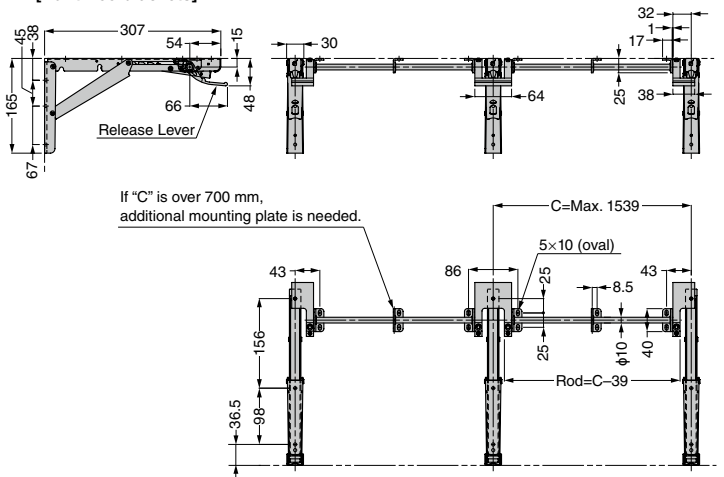
Video Link



[For two brackets]



[For three brackets]



**[Lever]**

ReHS	CAD	Item Code	Item Name	Type	Material	Finish	Weight (g)	Box (set)
●	●	120-046-395	EB-907560	For 2 brackets	Aluminium Alloy	Anodized	114	34
●	●	120-046-396	EB-907561	For 3 brackets			218	34

**[Rod]**

ReHS	CAD	Item Code	Item Name	Length	Material	Finish	Weight (g)	Box (pcs)
●	●	120-046-397	EB-907572	1500	Aluminium Alloy	Anodized	98	25

Refer to **1** : P.C9 **2** : P.C12