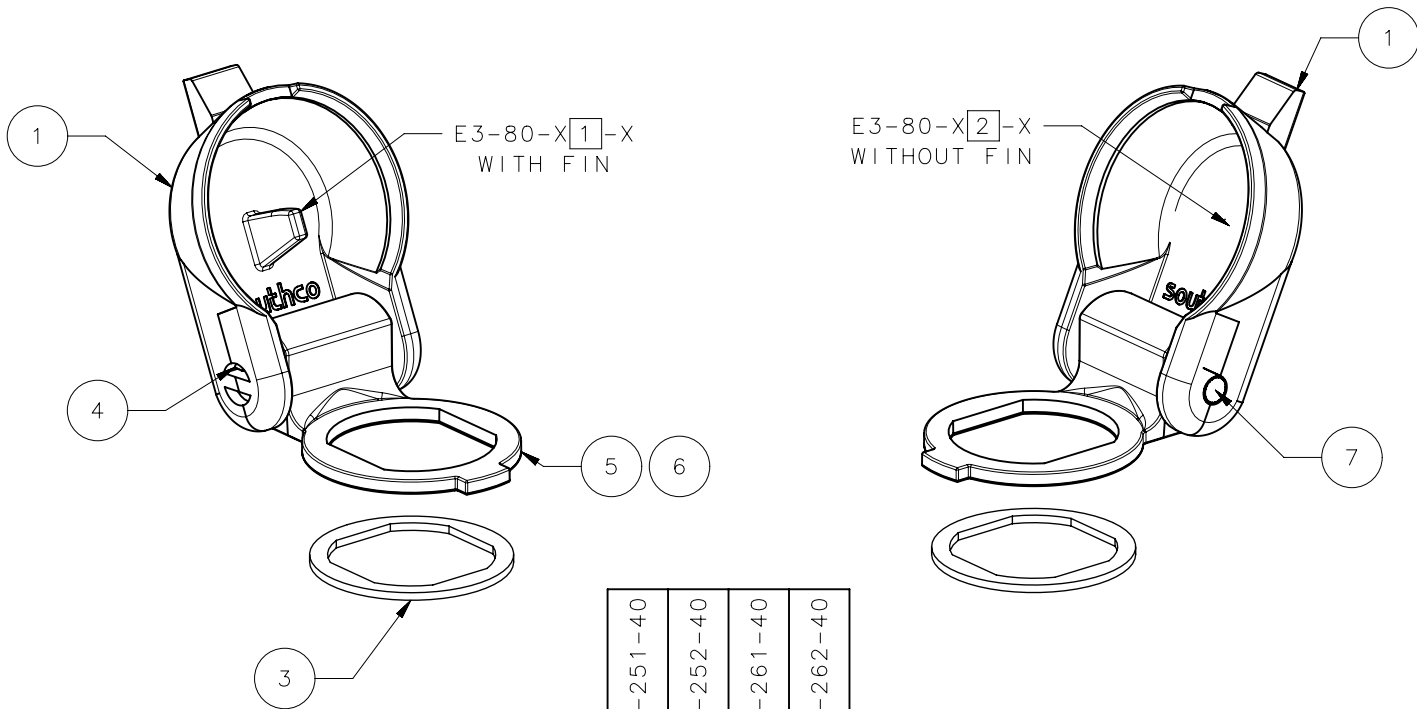
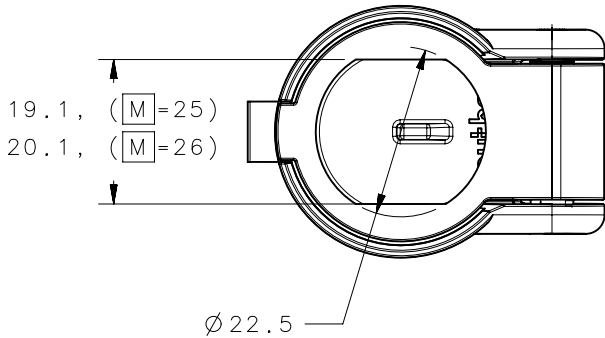
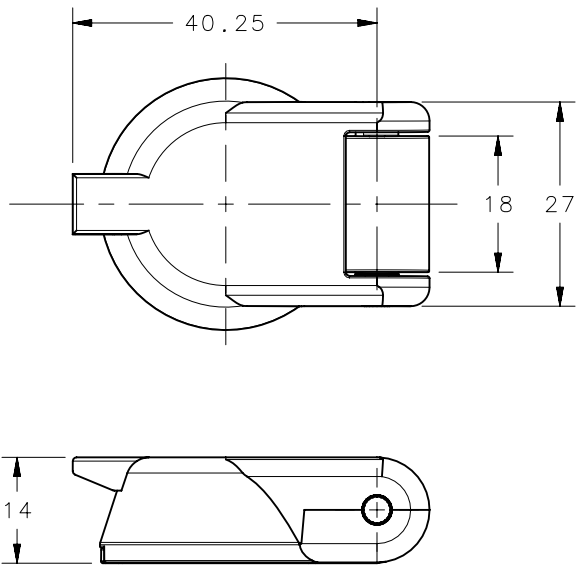
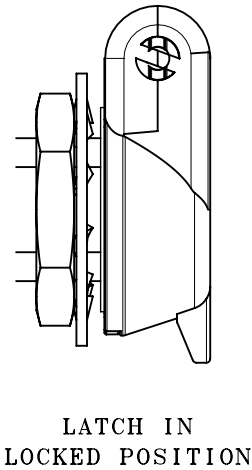
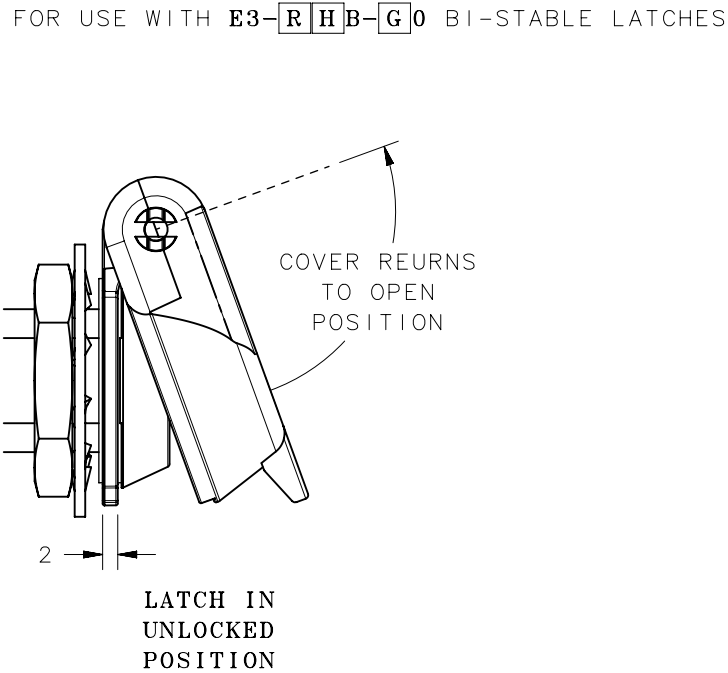
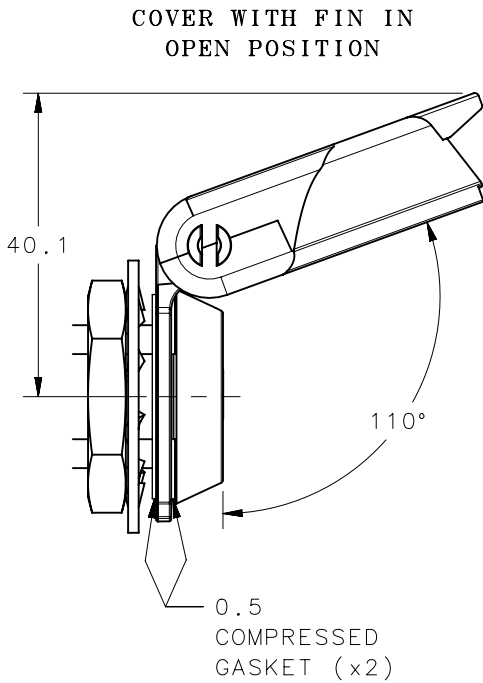


REVISION HISTORY			
REV	DATE	BY	DESCRIPTION
B	25SEP2020	JEM/AJT	PRN: P2020-1811

E3-80-M D-F

- M** MOUNTING STYLE
25 - SINGLE HOLE, 19.1mm
26 - SINGLE HOLE, 20.1mm
- D** DESIGN
1 - WITH FIN
2 - WITHOUT FIN
- F** FINISH
40 - STAINLESS STEEL, MIM



NO.	PART NUMBER	QTY	TYPE OF COMPONENT	MATERIAL
7		1	PIN	STAINLESS STEEL
6		-	HOUSING, 20.1 MOUNT	STAINLESS STEEL
5		1	HOUSING, 19.1 MOUNT	STAINLESS STEEL
4		1	HINGE ASSEMBLY	STEEL ALLOYS, PLASTIC
3		1	GASKET	BUNA-N, NATURAL
2		-	COVER WITHOUT FIN	STAINLESS STEEL
1		1	COVER WITH FIN	STAINLESS STEEL
-	E3-80-MD-F	-	BI-STABLE CAP ASSEMBLY	

CPB NUMBER 2019-1286	THIRD ANGLE PROJECTION	southco® CONNECT • CREATE • INNOVATE			
	MILLIMETERS [IN]				
SURFACE AREA XXXXXXmm ²	TOLERANCES UNLESS OTHERWISE NOTED	BI-STABLE COVER ASSEMBLY			
VOLUME XXXXXXmm ³	ALL DIMENSIONS WITHOUT TOLERANCES ARE FOR REFERENCE ONLY.	SIZE A3	SYSTEM NX	DWG NO. J-E3-80-MD-F	
PROPRIETARY ITEM EXCEPT FOR USES EXPRESSLY GRANTED IN WRITING, INFORMATION DISCLOSED HEREON IS CONFIDENTIAL AND ALL RIGHTS, PATENT AND OTHERWISE, ARE RESERVED BY SOUTHCO, INC.	PER ASME Y14.5M-1994	DRAWN BY JEM	DATE 23APR2020	SCALE 1:1	SHEET 1 OF 1