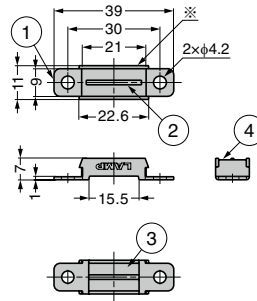


MAGNETIC CATCH MC-YN005 Centre Yoke Type



- Thin magnetic catch ideal for tight spaces.
- Heat resistance type MC-YN005HP **1** of the same shape also available.
- Small body with strong magnetic force.
- MC-YN005 (ferrite magnet type) made of stainless steel with excellent rust prevention.
- AS parts set (below) for installing to aluminium frame also available.
- Neodymium magnet type MC-YN005N is newly launched.
- ※part is marked with item name for identification.

[Applications]

- Food equipment, kitchen equipment, etc.

[Remarks]

- Be sure to read the "Cautions" **2**.

[Body]

RoHS	CAD	Item Code	Item Name	Magnet	Magnetic Force N	Magnetic Force kgf	Weight (g)	Box (pcs)	Carton (pcs)
		140-059-558	MC-YN005	Ferrite	29.4	3	9	200	1000
		140-026-512	MC-YN005-N	Neodymium	73.5	7.5	10	200	1000

Refer to **1** : P.610, **2** : P.607

No.	Part Name	Material		Finish	
		MC-YN005	MC-YN005-N	MC-YN005	MC-YN005-N
①	Yoke	Stainless Steel (SUS430)	Stainless Steel (SUS430)	Plain	Barrel Polished
②	Yoke	Stainless Steel (SUS430)	Stainless Steel (SUS430)		Barrel Polished
③	Magnet	Ferrite	Neodymium		Nickel
④	Cover	Stainless Steel (SUS304)	Stainless Steel (SUS304)		Plain



Parts Set for Installing to Aluminium Frame

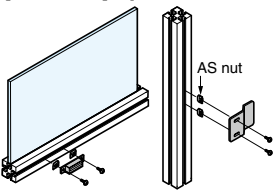
Please refer to the series introduction page **1** for details about AS series.



[AS Parts Set] Parts set of brackets, counter plate, screws and AS nuts used for installing to aluminium frame

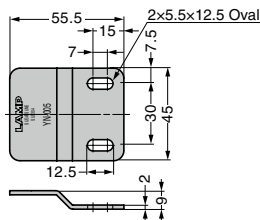
RoHS	CAD	Item Code	Item Name	Aluminium Frame	Parts	Weight (g)
		140-041-501	AS-MC-YN005-30-6	30 × 30 Groove Width 6 mm	Magnetic Catch MC-YN005 : 1 pc Counter Plate AS-YN005F : 1 pc AS Nut AS-6M4 : 4 pcs M4 × 10 Hexagon Socket Button Head Screw : 4 pcs	—
		140-041-502	AS-MC-YN005-30-8	30 × 30 Groove Width 8 mm	Magnetic Catch MC-YN005 : 1 pc Counter Plate AS-YN005F : 1 pc	—
		140-041-503	AS-MC-YN005-40-8	40 × 40 Groove Width 8 mm	AS Nut AS-8M4 : 4 pcs M4 × 10 Hexagon Socket Button Head Screw : 4 pcs	—
		140-041-504	AS-MC-YN005-40-10	40 × 40 Groove Width 10 mm	Magnetic Catch MC-YN005 : 1 pc Counter Plate AS-YN005F : 1 pc AS Nut AS-10M4 : 4 pcs M4 × 12 Hexagon Socket Button Head Screw : 4 pcs	—
		140-041-505	AS-MC-YN005-40-8-30-6	Door: 30 × 30 Groove Width 6 mm Frame: 40 × 40 Groove Width 8 mm	Magnetic Catch MC-YN005 : 1 pc Counter Plate AS-YN005D : 1 pc AS Nut AS-6M4 : 2 pcs AS Nut AS-8M4 : 2 pcs M4 × 10 Hexagon Socket Button Head Screw : 4 pcs	—
		140-041-506	AS-MC-YN005-40-10-30-8	Door: 30 × 30 Groove Width 8 mm Frame: 40 × 40 Groove Width 10 mm	Magnetic Catch MC-YN005 : 1 pc Counter Plate AS-YN005D : 1 pc AS Nut AS-8M4 : 2 pcs AS Nut AS-10M4 : 2 pcs M4 × 10 Hexagon Socket Button Head Screw : 2 pcs M4 × 12 Hexagon Socket Button Head Screw : 2 pcs	—

[Installation] [Counter Plate Installation]

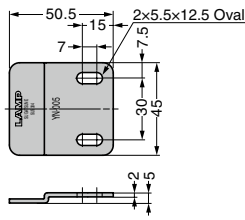


Refer to **1** : FRONT P.20, **2** : P.706

STAINLESS STEEL COUNTER PLATE AS-YN005



Counter Plate AS-YN005F (Flat type)



Counter Plate AS-YN005D (Stepped type)

RoHS	CAD	Item Code	Item Name	Material	Finish	Weight (g)	Box (pcs)	Carton (pcs)
		140-090-696	AS-YN005D	Stainless Steel	Barrel	—	50	300
		140-090-697	AS-YN005F	(SUS430)	Polished	38	50	300