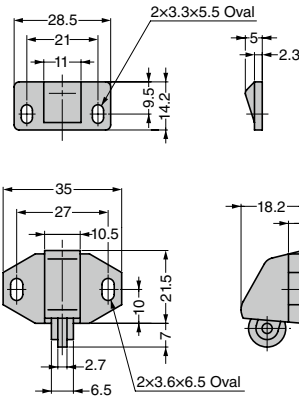
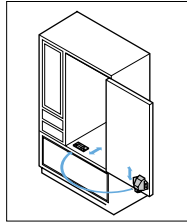


ROLLER CATCH C882



[Application Example]



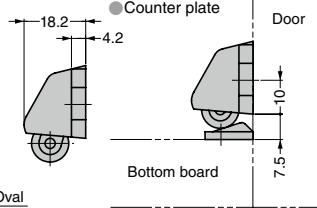
● The catch pulls the door in to ensure proper closing.

[Remarks]

● Please note the direction of counter plate.

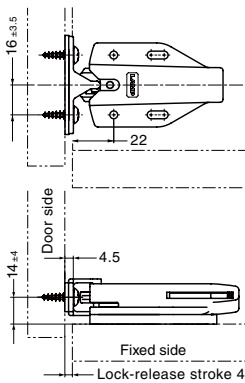
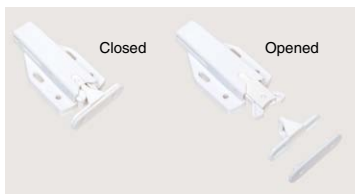
[Parts Included]

● Counter plate



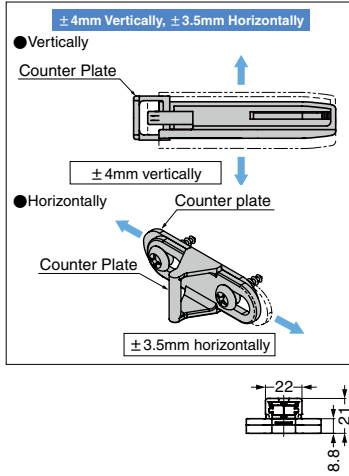
| RoHS | CAD | Item Code | Item Name | Material | Colour | Weight (g) | Box (pcs) | Carton (pcs) |
|------|-----|-------------|-----------|----------|--------|------------|-----------|--------------|
| - | 3D | 140-050-203 | C882W | PE | White | 5 | 150 | 1800 |
| - | 3D | 140-050-204 | C882BR | | Brown | 5 | 150 | 1800 |

NON-MAGNETIC TOUCH LATCH MLC-100DS-WT ±4mm Vertical Adjustment Type PAT



- Wider vertical adjustment range compared with MLC-100 1.
- Adjustment range of counter plate installation position: ±4mm vertically and ±3.5mm horizontally.
- Long stroke.
- No handle needed, just push to open/close.
- Non magnetic.
- Lightly push to open the door. When closing, arm will catch the counter plate and hold the door by lightly pushing, too.
- Installation with rivet is also possible.
- Similar item (vertical adjustment range: ±2mm): MLC-100 1.

[Adjustment]



[Specifications]

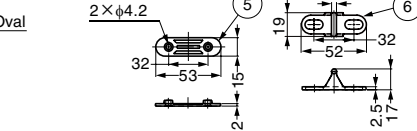
● Passed 100,000 open/close private cycle test

[Recommended Screws]

● M4 pan or truss head screw, No.4 rivet

[Parts Included]

● Truss head tapping screw 4x16 (SUS), 4x20 (SUS)

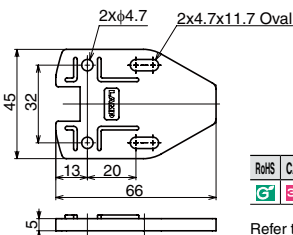


| No. | Part Name | Material | Finish/Colour |
|-----|---------------|------------------|------------------------------------|
| ① | Body 1 | Reinforced Nylon | White |
| ② | Body 2 | PBT | |
| ③ | Spring | Steel | Coloured Zinc Chromate (Trivalent) |
| ④ | Spacer | POM | White |
| ⑤ | Counter Plate | PBT | |
| ⑥ | Counter Plate | POM | |

| RoHS | CAD | Item Code | Item Name | Colour | Retaining Force N | Retaining Force kgf | Push Force N | Push Force kgf | Weight (g) |
|------|-----|-------------|--------------|--------|-------------------|---------------------|--------------|----------------|------------|
| G | 3D | 140-036-531 | MLC-100DS-WT | White | 90 | 9.2 | 14 | 1.4 | 51 |

Refer to 1 : P.649

SPACER MLC-100-DP5-WT



- Spacer for MLC-100 1, MLC-100DS-WT 2.
- Can adjust counter plate installation position +5mm.
- One spacer is included in MLC-100DS-WT.

| RoHS | CAD | Item Code | Item Name | Material | Colour | Weight (g) |
|------|-----|-------------|----------------|----------|--------|------------|
| G | 3D | 140-035-318 | MLC-100-DP5-WT | POM | White | 16 |

Refer to 1 : P.649, 2 : P.648