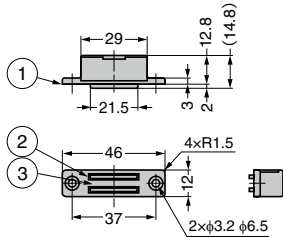


**MAGNETIC CATCH MC0051**



**[Remarks]**

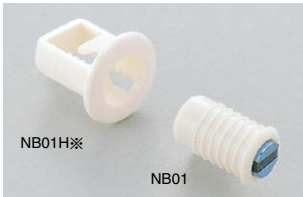
- Be sure to read the "Cautions" 1.

No.	Part Name	Material	Finish / Colour
①	Body	ABS	Black
②	Yoke	Steel (SPCC)	Clear Zinc Chromate
③	Magnet	Ferrite	-

RoHS	CAD	Item Code	Item Name	Magnetic Force N	Magnetic Force kgf	Weight (g)	Box (pcs)	Carton (pcs)
		140-053-503	MC0051	53.9	5.5	17	100	1000

Refer to 1 : P.607

**MAGNETIC CATCH NB01**



※Holder sold separately.

No.	Part Name	Material	Finish / Colour
①	Body	PA	White
②	Yoke	Steel (SPCC)	Clear Zinc Chromate (Trivalent)
③	Magnet	Ferrite	-

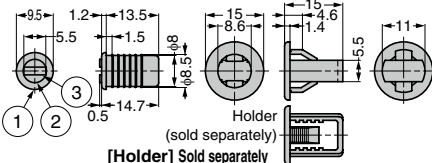
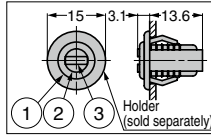
**[Remarks]**

- Be sure to read the "Cautions" 1.

**[Sold Separately]**

- Holder NB01H

**[Installation]**



Door Thickness	φ Hole Dia.
0.8~1.4	11.5
1.5~3	12

**[Body]**

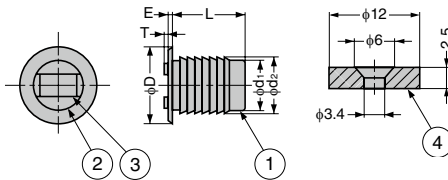
RoHS	CAD	Item Code	Item Name	Magnetic Force N	Magnetic Force kgf	Weight (g)	Box (pcs)	Carton (pcs)
		140-050-322	NB01	10.78	1.1	2	500	5000

Refer to 1 : P.607

**[Holder] Sold separately**

RoHS	CAD	Item Code	Item Name	Material	Colour	Weight (g)	Box (pcs)	Carton (pcs)
		140-050-205	NB01H	PA	White	0.5	500	5000

**MAGNETIC CATCH MC-IS**



**[Remarks]**

- Be sure to read the "Cautions" 1.

**[Parts Included]**

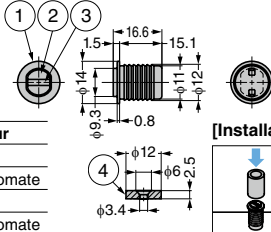
- Counter plate W4 2

No.	Part Name	Material	Finish / Colour
①	Body	PA	White, Black
②	Yoke	Steel	Coloured Zinc Chromate
③	Magnet	Ferrite	-
④	Counter Plate	Steel	Coloured Zinc Chromate

RoHS	CAD	Item Code	Item Name	Colour	D	L	E	T	d <sub>1</sub>	d <sub>2</sub>	Magnetic Force N	Magnetic Force kgf	Weight (g)	Box (pcs)	Carton (pcs)
		140-050-515	MC-IS2WP	White	10	13.8	1	0.7	8	8.6	9.8	1.0	4.7	200	5000
		140-050-517	MC-IS2BP	Black	10	13.8	1	0.7	8	8.6	9.8	1.0	4.7	200	5000
		140-050-516	MC-IS4WP	White	14	14	0.7	1.2	11	12	24.5	2.5	7.7	100	3000
		140-050-518	MC-IS4BP	Black	14	14	0.7	1.2	11	12	24.5	2.5	7.7	100	3000

Refer to 1 : P.607, 2 : P.639

**MAGNETIC CATCH MC-IS4F Yoke Movable Type**



- Movable magnet yoke allows better contact with counter plate and ensures full magnetic force.

**[Remarks]**

- Be sure to read the "Cautions" 1.
- When installing, please use a cylindrical thing to strike in the front flange part of magnetic catch shown as left.
- Do not use glue. (Or the yoke part may be stuck.)

**[Remarks]**

- Counter plate W4 2

RoHS	CAD	Item Code	Item Name	Colour	Magnetic Force N	Magnetic Force kgf	Weight (g)	Box (pcs)	Carton (pcs)
		140-050-519	MC-IS4FWTP	White	24.5	2.5	7.7	100	1000
		140-050-520	MC-IS4FBLP	Black				100	1000

Refer to 1 : P.607, 2 : P.639