

# STAINLESS STEEL CAM LOCK



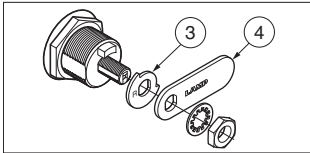
3800S



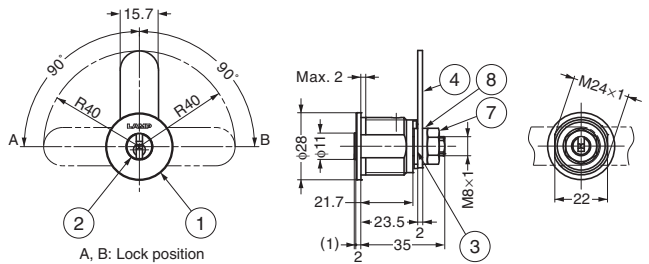
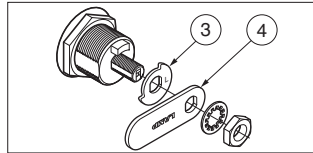
### Features

- High corrosion with stainless steel.
- Non-handed.
- Durability with thick cam.
- Reversible key can be removed when locked (90° rotation).
- Key works as a knob in unlocked position.
- 300 key changes available.
- Master Key system (300 key changes) available at surcharge. (1 Master Key only.)
- Keys can be shared with 3810S (P.319).

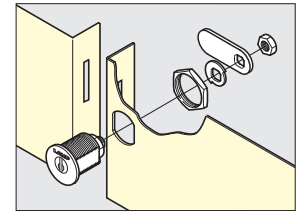
### Installation for Right-handed Door



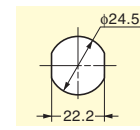
### Installation for Left-handed Door



### Installation



### Cut Out Dimensions



No.	Part Name	Material	Finish
①	Cylinder (Outer)	Stainless Steel (SUS303)	Satin
②	Cylinder (Inner)	Stainless Steel (SUS303)	2B Finish
③	Cylinder Cam	Stainless Steel (SUS304)	2B Finish
④	Cam	Stainless Steel (SUS304)	Plain
⑤	Nut (for Installing the Body)	Stainless Steel (SUS303)	Plain
⑥	Washer (for Body)	Stainless Steel (SUS304)	Plain
⑦	Nut (for Installing the Lock Plate)	Stainless Steel	Plain
⑧	Washer	Stainless Steel (SUS304)	Plain
⑨	Key	Nickel	Plain
-	Key Ring	Stainless Steel (SUS304)	Plain

Item Code	Old Item Code	Item Name	Key Type	Door Thickness	Weight	Box	Carton
150-012-921	—	3800S-B	Key Different	2 - 10	120 g	12 pcs	60 pcs
150-001-368	150-012-920	3800S-D	Key Alike	2 - 10	120 g	12 pcs	60 pcs

Please contact us for this item with master function.

\*Cylinder pin is made of brass.

# CAM LOCK

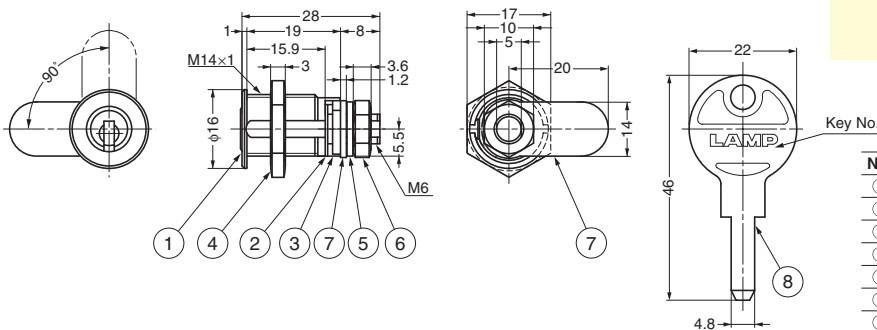
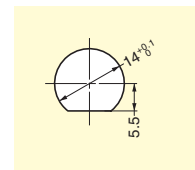
910MS



### Features

- Small cylinder lock with dimple key.
- Reversible key can be removed when locked (90° rotation).
- 47,000 key changes available.
- Master Key system available at surcharge. (Max. 1,000 key changes/Master Key.)

### Cut Out Dimensions



No.	Part Name	Material	Finish
①	Body	Brass	Chrome
②	Ring	Steel	Phosphated Treatment
③	Cam	Steel (SPCC)	Yellow Zinc Chromate
④	M14 Hex Nut	Steel (S20C)	Yellow Zinc Chromate
⑤	Washer	Steel	Yellow Zinc Chromate
⑥	M6 Hex Nut	Steel (S20C)	Yellow Zinc Chromate
⑦	Cam	Steel (SPCC)	Yellow Zinc Chromate
⑧	Key	Brass	Nickel

Item Code	Item Name	Key Type	Door Thickness	Weight	Box	Carton
150-025-141	910MS-B	Key Different	0.8 - 12	25.5 g	12 pcs	60 pcs
150-001-238	910MS-D	Key Alike	0.8 - 12	25.5 g	12 pcs	60 pcs

Please contact us for this item with Master Key system.