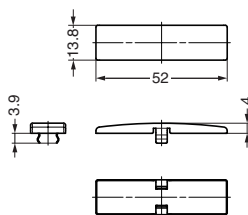


BODY COVER 360HC-19H26-NI For 19 and 26 mm Overlay

OLYMPIA



● Hides screws for a sleek look.

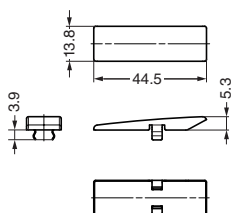
[Available Hinge]

- 360 (19 mm overlay type)
- H360 (26 mm overlay type)

RoHS	CAD	Item Code	Item Name	Material	Finish	Weight (g)	Box (pcs)
●	●	160-046-883	360HC-19H26-NI	Steel	Nickel Plating	2.6	400

BODY COVER 360HC-9H16-NI For 9 and 16 mm Overlay

OLYMPIA



● Hides screws for a sleek look.

[Available Hinge]

- 360 (9 mm overlay type)
- H360 (16 mm overlay type)

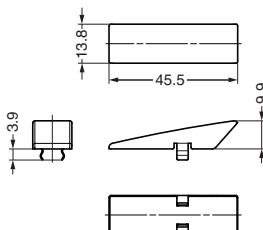
[Remarks]

- Cannot be used in 14 mm overlay installation.

RoHS	CAD	Item Code	Item Name	Material	Finish	Weight (g)	Box (pcs)
●	●	160-046-884	360HC-9H16-NI	Steel	Nickel Plating	2.2	400

BODY COVER 360HC-0H0-NI For Inset

OLYMPIA



● Hides screws for a sleek look.

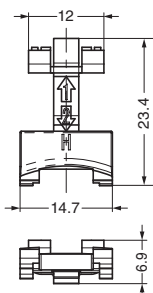
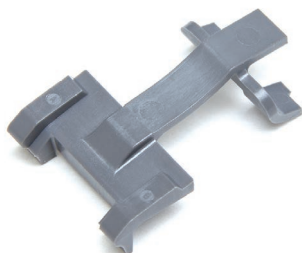
[Available Hinge]

- 360 (inset type)
- H360 (inset type)

RoHS	CAD	Item Code	Item Name	Material	Finish	Weight (g)	Box (pcs)
●	●	160-046-885	360HC-0H0-NI	Steel	Nickel Plating	2.7	400

85° ANGLE LIMITER H360-85 For Thick Doors

OLYMPIA

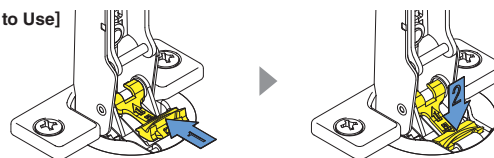


● Limits the opening angle from 100° to 85° of the H360 hinge.
(The H360 is a thick door model of OLYMPIA hinge series.)

[Remarks]

- Not available for inset use.

[How to Use]



RoHS	CAD	Item Code	Item Name	Material	Colour	Box (pcs)
●	●	160-044-151	H360-85	PBT	Grey	1,000