

GLASS DOOR HINGE GS-GH50 For Inset Doors



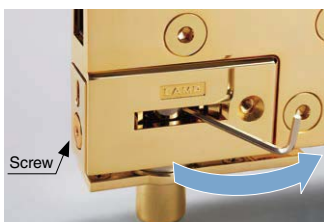
- Designed for large inset glass showcases.
- Recommended for use with the GS-GL50 lock **1** for design coordination.
- Doors can be temporary held in frames before fixing screws for easy installation.
- The door position can be adjusted by ± 3 mm right and left post installation. (Horizontal adjustment screw)
- The gap below the door can be adjusted from 7 up to 12 mm post installation. (Height adjustment ring)

[Remarks]

- Be sure to read the "Cautions" **2**.
- Prioritize the door weight when determining the glass size.
- For 8 mm thick glass, use with a packing A, B, and spacer.
- For 10 mm thick glass, use with a packing A and B.
- For 12/12.7 mm thick glass, use with two packing A.
- Shatter proof films are recommended to be used on glass doors for safety.

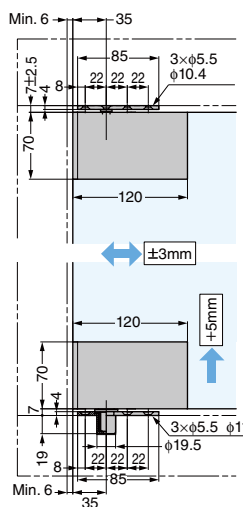
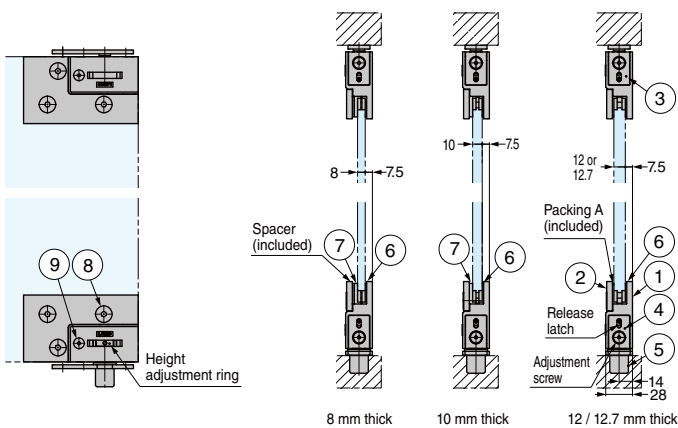
[Parts Included]

- Cross-recessed countersunk tapping screw 5×30
- Hex key 3 (for door position adjustments)
- Hex key 5 (for hinge assembly)
- Packing A
- Spacer (for 8 mm thick glass)

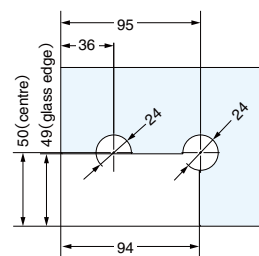


[Door Position Adjustments]

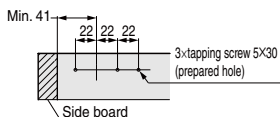
Door height can be adjusted by turning the ring with a hex key. It can also be done post installation. Lateral adjustment can be done with the screw.



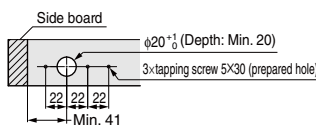
[Cut Out Dimensions]



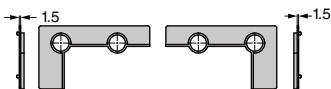
[Mounting Position on Top Board]



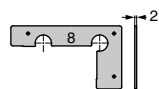
[Processing on Bottom Board]



[Packing A]

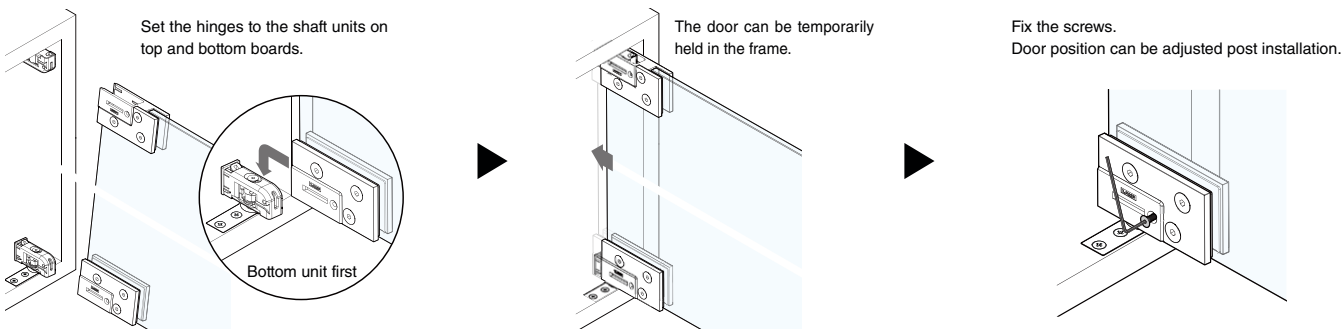


[Spacer] (for 8 mm thick glass)



No.	Part Name	Material	Finish		
			CR	GP	BL
①	Body (front)	Zinc Alloy (ZDC)	Chrome	Gold Plated (24K)	Enamel Black
②	Body (back)				
③	Upper Shaft Unit				
④	Bottom Shaft Unit				
⑤	Bottom Mounting Plate				
⑥	Packing A (t: 1.5)	Chloroprene Rubber (CR)	Black		
⑦	Packing B (t: 3.5)				
⑧	Hex socket bolt M8×16	Steel	Chrome	Gold Plated (24K)	Enamel Black
⑨	Hex socket bolt M5×10				

Easy Installation



Sold in sets of two hinges.

RoHS	CAD	Item Code	Item Name	Finish/Colour	Available Glass Size			Load Capacity /set		Box (set)	Carton (set)
					Width	Height	Thickness	N	kgf		
-	●	170-046-839	GS-GH50-CR	Chrome	Max. 900	Max. 2500	8, 10, 12, 12.7	490	50	1	4
-	●	170-046-840	GS-GH50-GP	Gold Plated (24K)						1	4
-	●	170-046-841	GS-GH50-BL	Enamel Black						1	4

Refer to **1**: P.E5, **2**: No.280 P.15