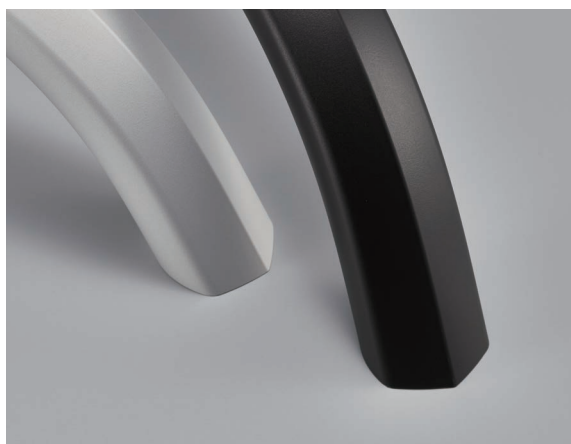


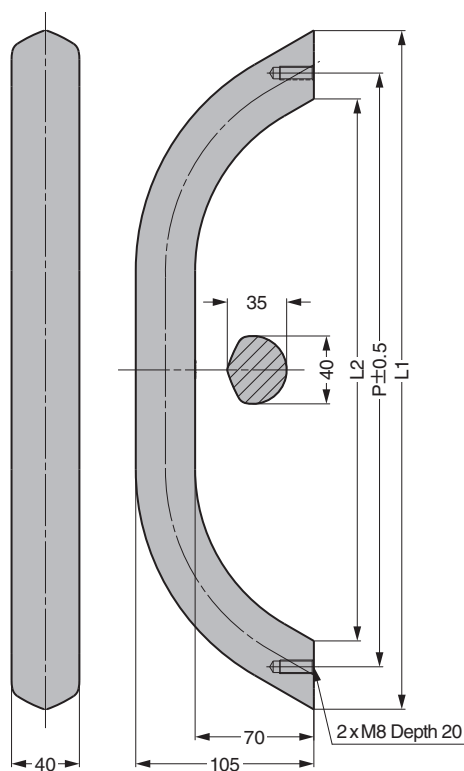
MACHINERY HANDLE MMH



- Cross-section is thicker than the MSH **1**, which makes this handle suitable for use in large machine tools.
- Ideal for inset sliding doors. The handle is designed to be higher than common handles, which prevents hands from accidentally hitting the doorframe when sliding.
- Back side of the handle is large and round, which prevents hands from hurting even when grasping tightly.
- Harmonious design. The handle has a centerline helping it harmonise with machine tools with chamfered edges.

[Remarks]

- Load capacity represents the strength of the pull itself. Actual load capacity may vary depending on wall and cabinet materials. Please install the pull at places with sufficient strength or in places that are reinforced.
- Surface colour of installation side may discolour. This does not affect the performance.



RoHS	CAD	Item Code	Item Name	Material	Finish	L1	L2	P	Load Capacity		Weight (g)	Box (pc)
									N	kgf		
●	●	100-043-781	MMH-350SL	Aluminium Alloy	Matte Silver/Anodised	400	319.5	350	1000	102	1250	1
●	●	100-043-782	MMH-350BL		Matte Black/Anodised							1
●	●	100-043-783	MMH-550SL		Matte Silver/Anodised	600	519.5	550			1830	1
●	●	100-043-784	MMH-550BL		Matte Black/Anodised							1
●	●	100-043-785	MMH-750SL		Matte Silver/Anodised	800	719.5	750			2400	1
●	●	100-043-786	MMH-750BL		Matte Black/Anodised							1

Refer to **1** : No.240A P.11-6