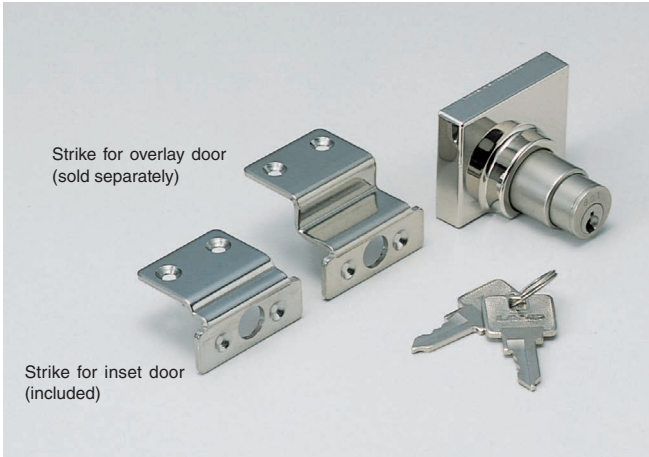


# GLASS DOOR LOCK 2100 Lock Series



# MKL-2100



### Features

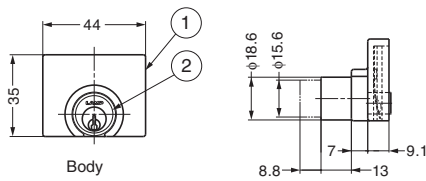
- Pre-drilling on glass not required.
- For inset door.
- MKL-B mounting plate (option) is available for overlay.
- Key different type possible as special order (12 key changes).
- Keys can be shared with 2100 Lock Series.

### Parts Included

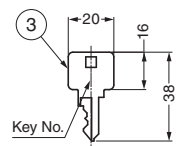
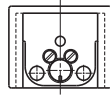
- Mounting plate for inset doors
- Flat head cross screws 3.1 x 1.6 (SUS)

### Optional Parts

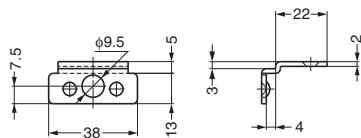
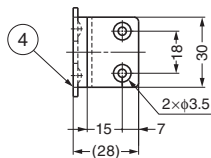
Mounting plate for overlay door MKL-B



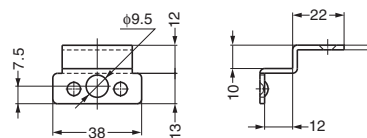
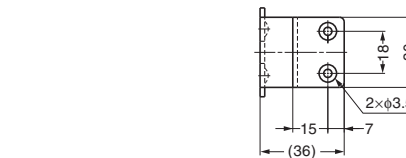
Body



Key No.

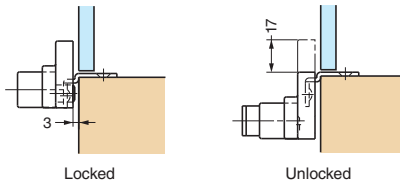
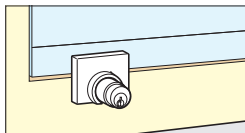


Strike for inset door (included)



Strike for overlay door (sold separately)

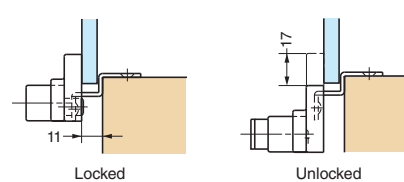
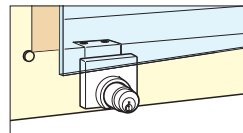
### Inset Door



Locked

Unlocked

### Overlay Door



Locked

Unlocked

No.	Part Name	Material	Finish
①	Plate	Zinc Alloy (ZDC)	Nickel
②	Push Lock	Zinc Alloy (ZDC)	Searchlight Chrome
③	Key	Brass	Nickel
④	Counter Plate for Inset Door	Stainless Steel (SUS304)	Polished

### Body

Item Code	Old Item Code	Item Name	Key Type	Glass Thickness	Weight	Box	Carton
150-001-411	150-069-709	MKL-2100-D	Key Alike	5 - 8	125 g	12 pcs	60 pcs

### Counter Plate for Overlay Door (Optional Parts)

Item Code	Item Name	Material	Finish	Box	Carton
150-069-538	MKL-B	Stainless Steel (SUS304)	Polished	60 pcs	360 pcs

