

# CENTRAL LOCKING SYSTEM FOR FURNITURE (WITH INDICATOR) 2200 Lock Series



ALS2200

LOCKS

CENTRAL LOCKING SYSTEM FOR FURNITURE



## Features

- Locks all drawers on one side simultaneously.
- With indicator: Unlocked - Blue, Locked - Red.
- 12 key changes available. (Max. 300 key changes as special order)
- Master Key system (170 key changes) available at surcharge. (1 Master Key only.)
- Keys can be shared with other 2200 Lock Series.
- The depth of the shelf can be adjusted according to the position of the lock pin.

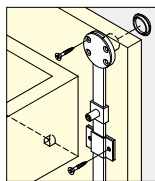
## Parts Included

- Countersunk head wood screw 2.7 × 16
- Pan head wood screw 2.7 × 13

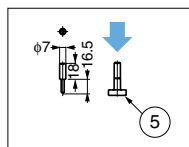
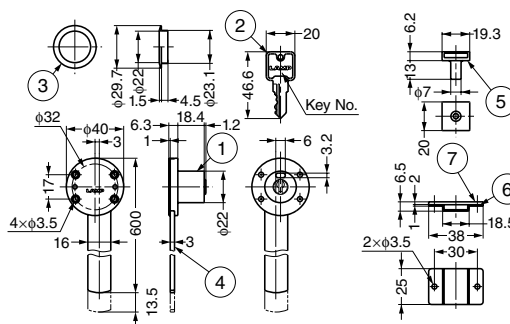
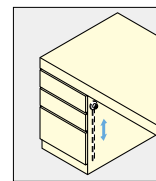
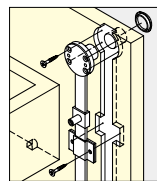
## Sold Separately

- Separate parts ALS-LP, ALS-G, ALS-GP
- Locking peg ALS-KP (optional parts)

## Surface Mounting



## Mortise Mounting



Use Locking Peg inserted into ⑤ for the application with drawer slides.

No.	Part Name	Material	Finish
①	Body	Zinc Alloy (ZDC)	Satin Nickel
②	Key	Brass	Nickel
③	Ring	Brass	Satin Nickel
④	Guide Bar	Aluminum Alloy	-
⑤	Lock Pin	Zinc Alloy (ZDC)	Yellow Zinc Chromate
⑥	Guide	Steel	Nickel
⑦	Guide Plate	Steel	Nickel

## Lock Set (① - ⑦)

Item Code	Item Name	Key Type	Cylinder Diameter	Door Thickness	Weight	Box	Carton
150-060-921	ALS2200-B	Key Different	φ22	18	253 g	1 set	20 sets
150-060-920	ALS2200-D	Key Alike	φ22	18	253 g	1 set	20 sets

Please contact our sales executives for master function.

## Parts (⑤ - ⑦) (Sold Separately)

Item Code	Item Name	Part Name	No.	Weight
150-060-134	ALS-LP	Lock Pin for All-Lock	⑤	11.5 g
150-945-903	ALS-G	Guide for All-Lock	⑥	8 g
150-945-902	ALS-GP	Guide Plate for All-Lock	⑦	14.5 g

## Locking Peg (Optional Parts)

Item Code	Item Name	Material	Finish	Weight	Box	Carton
150-060-117	ALS-KP	Steel	Nickel	6.5 g	400 pcs	2,000 pcs