

GLASS DOOR LOCK GS-GL20 Million Lock Series



Application	Door Material	Key Changes	Master Key	When Unlocked	Total Lock
Single swing door	Glass	Max. 1 million	—	The key is removable	Million Lock Series

*Max. 2520 changes per master key (made to order)

- Cylinder lock designed for glass showcases.
- Designed for use with the GS-GH20 1 and GS-GB20 2 for design coordination.
- The keys are dimple type and reversible
- The strike plate also works as a door stopper, providing stable locking operation.
- The only drilling required for the cabinet is a round hole. This makes the installation very quick.

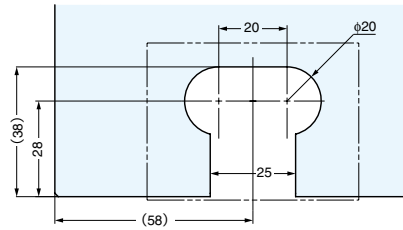
[Remarks]

- Note that scratches on the black type may become conspicuous. Please handle it with care during installation.
- Shatter proof film is recommended to be used on glass for safety.

[Parts Included]

- Cross-recessed countersunk tapping screw 3 × 14
- Key
- Strike plate
- Spacer

[Cut Out Dimensions]



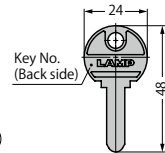
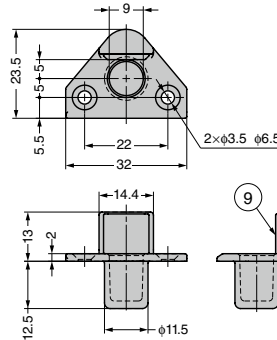
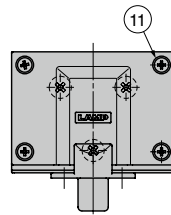
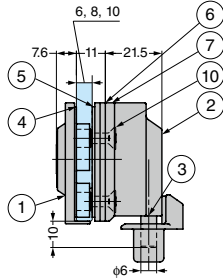
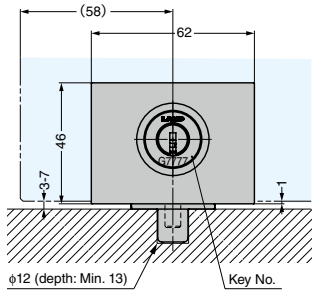
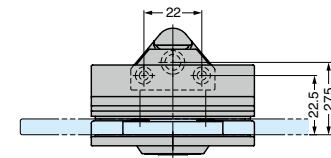
[Round Dead Bolt]



[Required Number of Spacers]

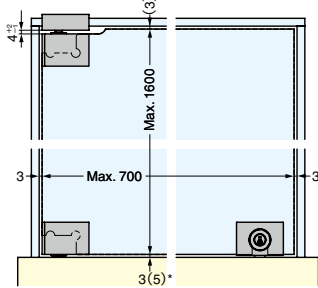
Glass Thickness	Spacer
6 mm	2 pcs
8 mm	1 pc
10 mm	—

Only processing required for boards is a $\phi 12$ mm drilling.



[Installation Example] Using with GS-GH20 and GS-GB20

- On Glass Top Board
- On Wood Top Board



* The () indicates the dimensions when the washer of GS-GH20 is attached.

No.	Part Name	Material	Finish		
			CR	GP	BL
①	Face Plate	Zinc Alloy (ZDC)	Chrome	Gold Plated (24K)	Enamel Black
②	Case Lock				
③	Dead Bolt	Brass		Chrome	
④	Holding Packing	Polypropylene (PP)			
⑤	Packing	Chloroprene Rubber (CR)		Black	
⑥	Spacer	ABS			
⑦	Back Plate	Zinc Alloy (ZDC)	Chrome	Gold Plated (24K)	Enamel Black
⑧	Strike Plate				
⑨	Strike Plate Rubber	EPDM		Black	
⑩	Cross-recessed screw M4 x 12			Plain	
⑪	Cross-recessed countersunk screw M3 x 15	Stainless Steel	Plain	Gold Plated (substitute)	Enamel Black

RoHS	CAD	Item Code	Item Name	Finish	Key Type	Glass Thickness	Key Removal	Key Rotation Angle	Box (pc)	Carton (pcs)
—	●	150-042-117	GS-GL20-CR-B	Chrome	Key Different	6, 8, 10	Two Areas	360°	1	24
—	●	150-001-365	GS-GL20-CR-D		Key Alike				1	24
—	●	150-042-119	GS-GL20-GP-B	Gold (24K) Plated	Key Different				1	24
—	●	150-001-366	GS-GL20-GP-D		Key Alike				1	24
—	●	150-042-121	GS-GL20-BL-B	Black	Key Different				1	24
—	●	150-001-367	GS-GL20-BL-D		Key Alike				1	24

Refer to 1 2: P.367-4