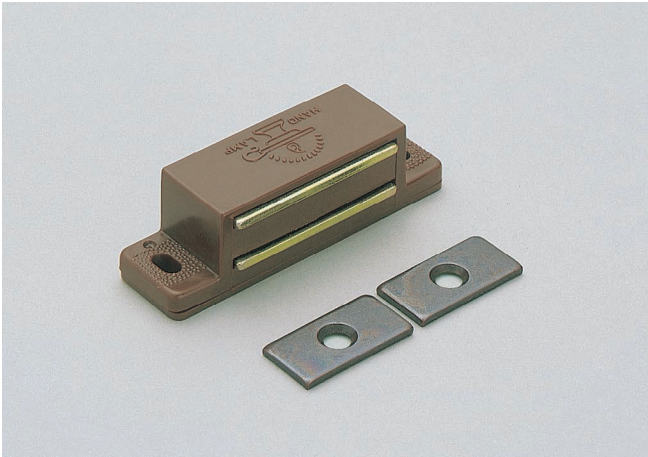


MAGNETIC CATCH

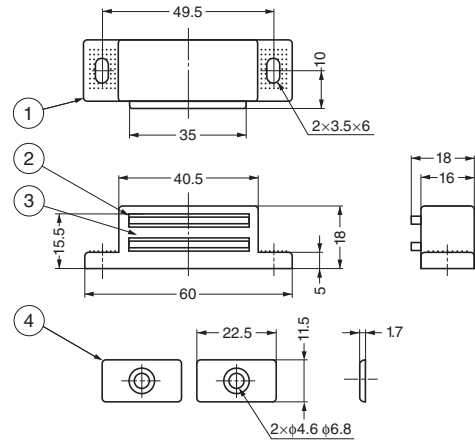


MC-EA



Parts Included

- Cross-recessed truss head tapping screw
- Countersunk head wood screw 2.7×13



No.	Material	Finish/Colour
①	Polyethylene (PE)	Brown
②	Steel (Yoke)	Yellow Zinc Chromate
③	Ferrite	-
④	Steel	Bronze

The finish of the following parts will be "Clear Zinc Chromate (trivalent)" when the current stock runs out.

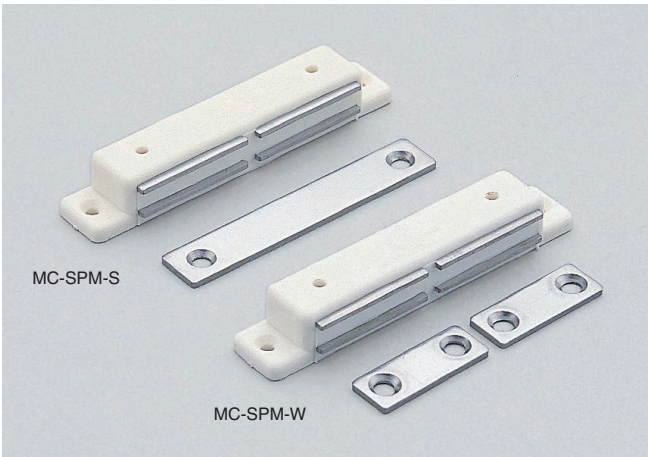
- York (No.1)
- Counter plate (No.4)
- Included screw

Item Code	Item Name	Magnetic Force N	Magnetic Force kgf	Screw	Weight	Box	Carton
140-050-061	MC-EA	19.6 N	2 kgf	4 pcs	40 g	24 pcs	360 pcs

MAGNETIC CATCH



MC-SP

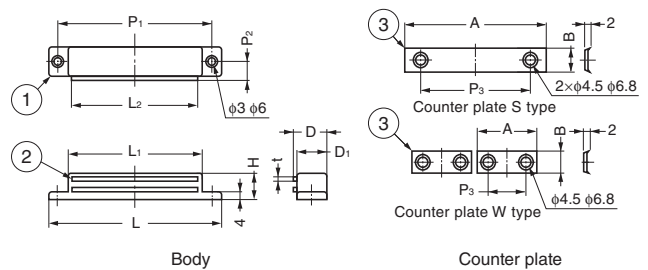


Features

Internal sponge reduces noise from contact when door closes.

Parts Included

Countersunk head wood screw 2.7×1.6 (SUS)



No.	Material	Finish/Colour
①	PBT	White
②	Stainless Steel (SUS430)	-
③	Stainless Steel (SUS430)	-

Item Code	Item Name	L	L ₁	L ₂	D	D ₁	H	P ₁	P ₂	t	A	B	P ₃	Magnetic Force	Screw	Weight	Box	Carton
140-050-070	MC-SPM-S	86	68.4	63	17	15	13	77	9.5	1.5	70	12	57	47.0 N	4 pcs	57 g	12 pcs	360 pcs
140-050-071	MC-SPM-W	86	68.4	63	17	15	13	77	9.5	1.5	30	11	20	47.0 N	6 pcs	53.5 g	12 pcs	360 pcs
140-050-072	MC-SPL-S	106	85.6	80	20.5	18	16	94	11.5	2	79	14	65	54.9 N	4 pcs	100 g	6 pcs	180 pcs
140-050-073	MC-SPL-W	106	85.6	80	20.5	18	16	94	11.5	2	38	14	25	54.9 N	6 pcs	100 g	6 pcs	180 pcs



CATCHES & LATCHES

MAGNETIC CATCH