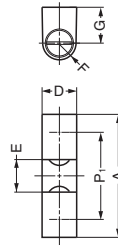
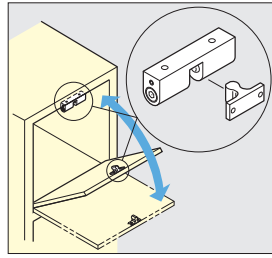
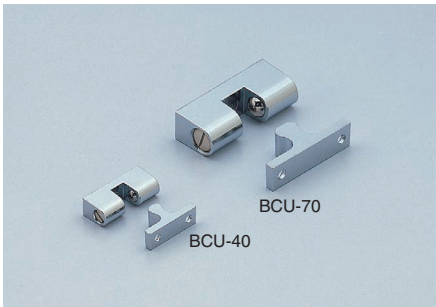


## TENSION CATCH

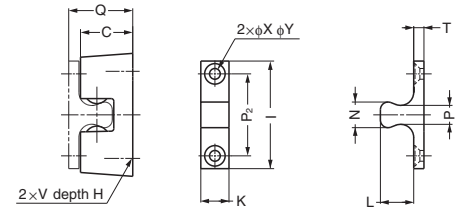
TEST METHOD 10

BCU



### Features

Can be installed vertically or horizontally.



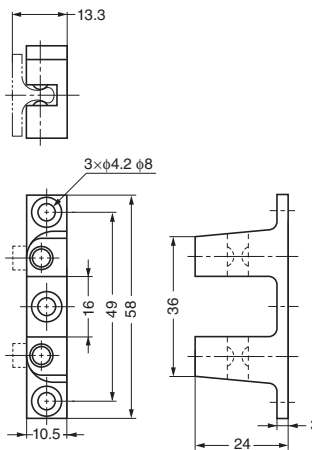
Item Code	Item Name	Push-in Force		Pulling Force		Material	Finish	Weight	Box	Carton
140-050-103	BCU-40	35.3 N	3.6 kgf	23.5 N	2.4 kgf	Zinc Alloy (ZDC)	Chrome	18 g	100 pcs	400 pcs
140-050-104	BCU-70	40.2 N	4.1 kgf	38.2 N	3.9 kgf	Zinc Alloy (ZDC)	Chrome	75 g	50 pcs	200 pcs

Item Name	A	P1	C	D	E	F	G	H	I	P2	K	L	N	P	T	X	Y	Q	V
BCU-40	28.5	20	12.5	8.3	6.5	R4	8.5	5	25	16	7.5	8.8	5.5	3.7	3	3.2	6.4	15.7	M3
BCU-70	48	34	20.5	13.5	12.7	R6.5	14	6	42	32	11	13	10	7.3	4	4.2	8.4	24.9	M5

## TENSION CATCH

TEST METHOD 10

BCT-60W

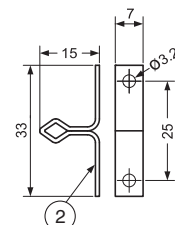
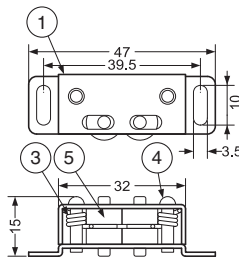


Item Code	Item Name	Push-in Force	Pulling Force	Material	Finish	Weight	Box	Carton
140-059-035	BCT-60W	31.4 N	3.2 kgf	Zinc Alloy (ZDC)	Chrome	39.5 g	80 pcs	320 pcs

## ROLLER CATCH

STAINLESS 304 STEEL

S-1080 (STBRC)



No.	Part Name	Material	Finish
①	Body	304 Stainless Steel	Plain
②	Counter Plate		
③	Spring		
④	Rivet	430 Stainless Steel	White
⑤	Roller	Polyethylene	

Item Code	Item Name	Push-in Force	Pulling Force	Weight	Box	Carton
140-098-005	S-1080 (STBRC)	1.0 kgf	2.7 kgf	18 g	60 pcs	1,200 pcs