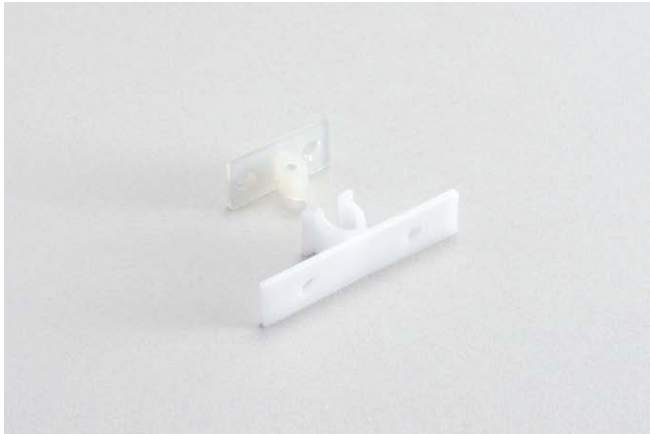


KNUCKLE CATCH



JC-T50



Features

- Resin body prevents rusting.
- Can be used on both overlay and inset doors.
- Can be used on doors, drawers and a variety of different applications.
- Great solution for furniture, kitchen appliances, general purpose kitchen items and in marine applications.

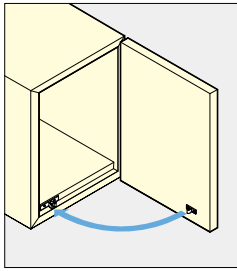
Parts Included

- Countersunk head tapping wood screw 2.7x16 (for male installation)
- Binding head screw 4x16 (for female screw)

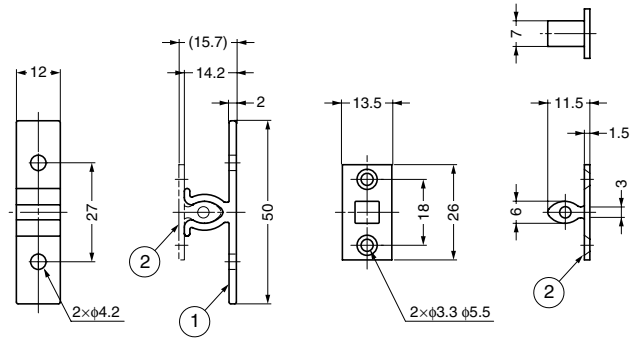
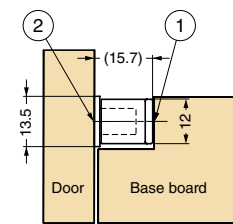
Remarks

- The Push - in Force and Pulling Force display initial valuse.

Installation



Application Reference



No.	Part Name	Material	Colour
①	Body	Polyacetal (POM)	Natural
②	Counter Plate	Polyamide (PA)	Natural

Item Code	Item Name	Push-in Force N	Push-in Force kgf	Pulling Force N	Pulling Force kgf	Weight	Box	Carton
140-019-545	JC-T50	25.5 N	2.6 kgf	23.5 N	2.4 kgf	3 g	50 pcs	500 pcs

ROLLER CATCH

C882



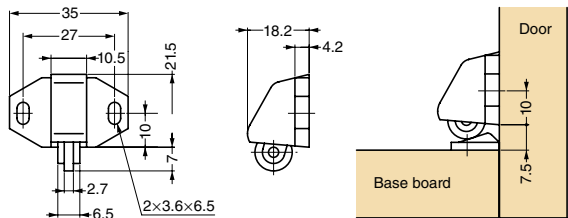
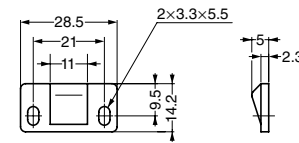
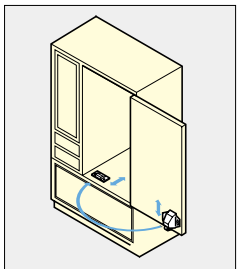
Features

The catch pulls the door in for a tighter close.

Remarks

Please note the direction of counter plate.

Installation



Item Code	Item Name	Material	Colour	Weight	Box	Carton
140-050-203	C882W	Polyethylene (PE)	White	5 g	150 pcs	1,800 pcs
140-050-204	C882BR	Polyethylene (PE)	Brown	5 g	150 pcs	1,800 pcs