

CUP COVER J95CC For J95 Concealed Hinges



Rohs	CAD	Item Code	Item Name	Material	Finish/Colour	Weight (g)	Box (pcs)
●	●	160-045-369	J95CC-GR	ABS	Gray	3.2	50
●	●	160-045-370	J95CC-NI		Nickel		50
●	●	160-045-371	J95CC-BC		Black Nickel		50

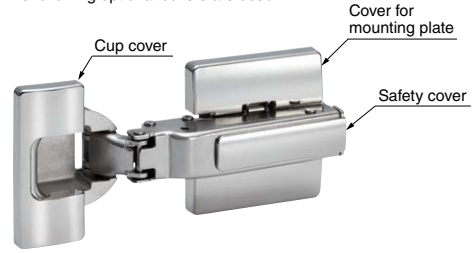
- Special cover for J95 hinges to hide the screws.
- Comes with a double-sided tape to bond the cover and hinge.

[Remarks]

- Please make sure that the surface is clean before taping.

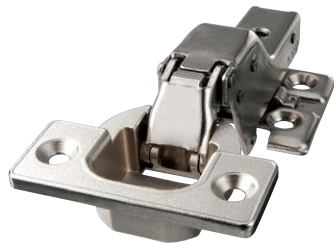
[No Visible Screws]

The following optional covers are used:



The J95 hinge above is the 25 mm overlay model. (Nickel colour)

Recommended Series HEAVY-DUTY CONCEALED HINGES J95



For Heavy Doors,

Max. **25** kg with **2** pcs

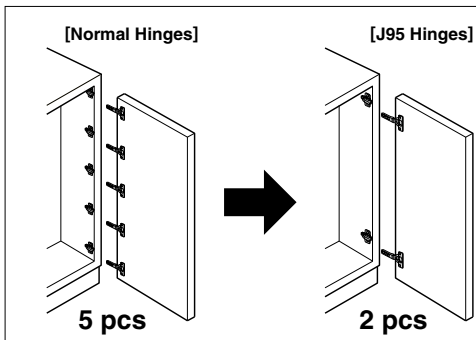
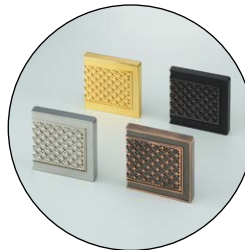
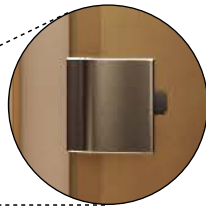
Max. **40** kg with **3** pcs *

* Max. 35 kg on a glass door



Face Plate for Glass Doors

Optional plates are available for use on glass doors.



Quick Installation!

Less Hinges, More Efficiency!

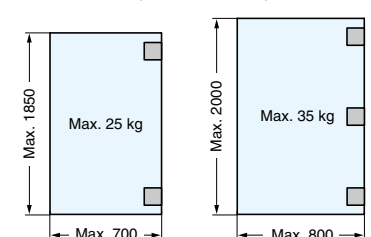
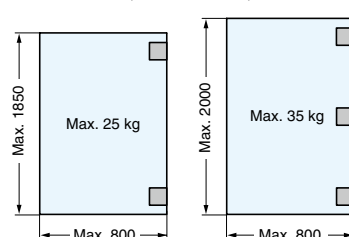
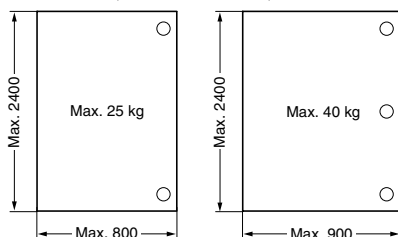
Reduce installation time and provide clean appearance

[Door Specs and Number of Hinges]

● Wood doors (thickness: 18-30 mm)

● Glass doors (thickness: 8 mm)

● Glass doors (thickness: 10 mm)



Install the upper and lower hinges within 200 mm from the door end. Set equal installation pitch when using 3 pieces.