

GLASS DOOR LOCK **GS-GL50** Easy Key Change

INSTRUCTION

TEMPERED GLASS

STEEL



[Round Dead Bolt]



Only processing required for boards is drilling.

[Reversible Key]



Comes with dimple keys.



[For Luxury Shops]

Smooth key operation and solid deadbolt enabling secure locking make the GS-GL50 ideal for luxury shops.

Application	Door Material	Key Changes	Master Key	When Unlocked	Total Lock
Single swing door	Glass	Max. 3 million	-	The key is removable	Super Rim Lock Series

*Max. 300 changes per master key (made to order)

- Cylinder lock designed for glass showcases.
- Designed for use with the GS-GH50 hinge 1 for design coordination.
- Thick stainless steel deadbolt for added security.
- The keys are dimple type and reversible.
- Key number can be changed without replacing the cylinder. (Easy key change system)
- A cover hides the key hole.
- The face plate can be used as a handle to open the door.
- The only drilling required for the cabinet is a round hole. This makes the installation very quick.

[Others]

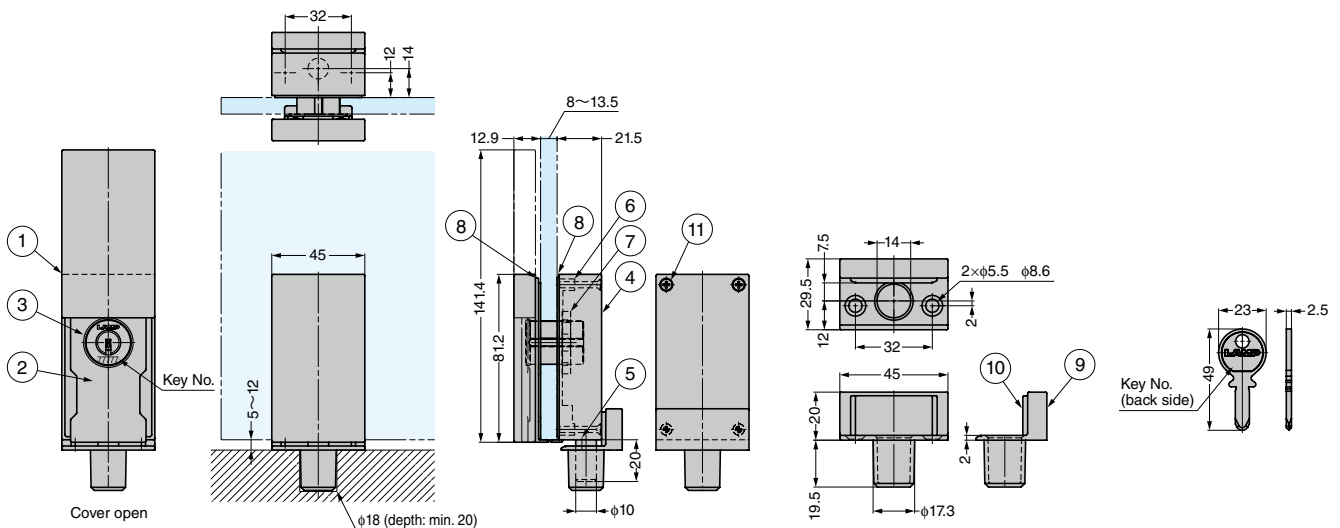
- Special type which does not have the construction key system is also available. (Key changes: 3,000 per master key)

[Remarks]

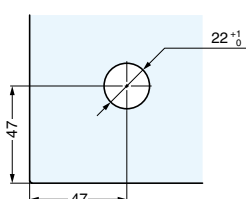
- Note that scratches on the black type may become conspicuous. Please handle it with care during installation.
- Shatter proof film is recommended to be used on glass for safety.
- The key number can be changed up to 2 times.
- Previous keys cannot be used again after changing key number.
- Read the remarks on handling the lock before use.

[Parts Included]

- Cross-recessed countersunk tapping screw 4 × 20 (The finish is the same as the strike plates.)
- Key
- Strike plate



[Cut Out Dimensions]



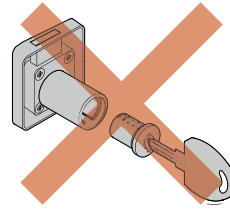
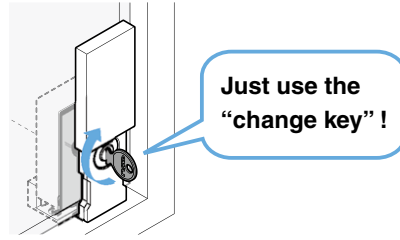
Refer to 1: P.F31

No.	Part Name	Material	Finish		
			CR	GP	BL
①	Slide Cover	Zinc Alloy (ZDC)	Chrome	Gold Plated (24K)	Enamel Black
②	Face Plate				
③	Cylinder				
④	Case Lock	Zinc Alloy (ZDC)	Plain	Nickel	
⑤	Dead Bolt	Stainless Steel			
⑥	Back Plate	Zinc Alloy (ZDC)	Plain		
⑦	Nut	Brass	Black		
⑧	Packing	Chloroprene Rubber (CR)	Black		
⑨	Strike Plate	Zinc Alloy (ZDC)	Chrome	Gold Plated (24K)	Enamel Black
⑩	Strike Plate Rubber	EPDM	Black		
⑪	Cross-recessed countersunk screw M3 x 18	-	Chrome	Gold Plated (24K)	Enamel Black

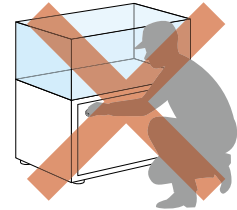
Easy Key Change. No Cylinder Replacements Needed.

The key number can be changed by simply using a "change key".

It is unnecessary to ask locksmith for replacing cylinders, for example, when the key is lost or tenants are changed.



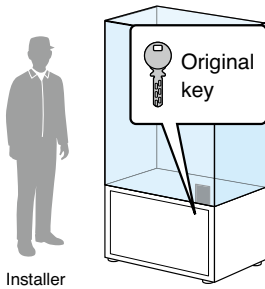
No cylinder replacements needed



No locksmith's help needed

Use Example in Tenant Shop

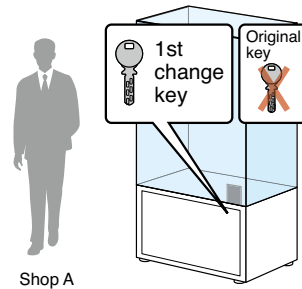
① During installation



Installer

"Original key" is used during installation.
(The "original key" is included.)

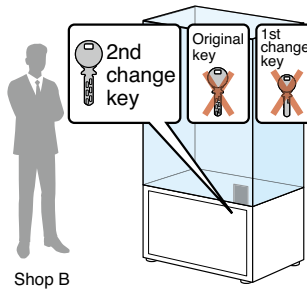
② When a new tenant moves in



Shop A

"1st change key" is used for "shop A".
The "original key" is no longer be used after this.
(The "1st change key" is made to order.)

③ When the tenant changes



Shop B

"2nd change key" is used for "shop B".
The "1st change key" is no longer be used after this.
(The "2nd change key" is made to order.)



Key numbers cannot be changed anymore.

[Combined Usage with Key and Master Key]

- There are also three kinds of Master Keys: Original Master Key, Master Keys for 1st change and 2nd change. They are available by made to order.
- Master Keys must also be changed after the lock's key number is changed.
- All key numbers will be changed by using new master key.
- In case only some of the locks' key numbers in Master Key system are changed, master keys for that portion should still be kept.

RoHS	CAD	Item Code	Item Name	Finish	Key Type	Master Key System	Glass Thickness	Key Removal	Key Rotation Angle	Box (pc)	Carton (pcs)			
-	●	150-047-111	GS-GL50MK-CR-B	Chrome	Key Different	With	8 - 13.5	Two Areas	360°	1	12			
-	●	150-047-112	GS-GL50-CR-B			Without				1	12			
-	●	150-001-172	GS-GL50-CR-D		Key Alike	1				12				
-	●	150-047-113	GS-GL50MK-GP-B	Gold Plated (24K)	Key Different	With				8 - 13.5	Two Areas	360°	1	12
-	●	150-047-114	GS-GL50-GP-B			Without							1	12
-	●	150-001-173	GS-GL50-GP-D		Key Alike	1							12	
-	●	150-047-115	GS-GL50MK-BL-B	Enamel Black	Key Different	With	8 - 13.5	Two Areas	360°				1	12
-	●	150-047-116	GS-GL50-BL-B			Without							1	12
-	●	150-001-174	GS-GL50-BL-D		Key Alike	1							12	