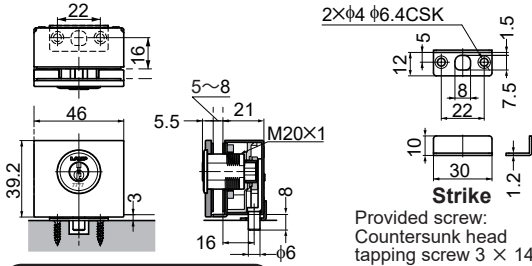


LAMP[®] GS-GL3-KT KT GS-GL3-KF KF SWING DOOR LOCK INSTALLATION MANUAL

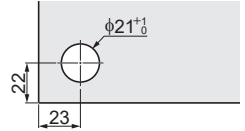
Thank you for using our product. Before installation, please read this manual thoroughly to ensure correct installation.
Please keep this manual at hand for future reference.

DIMENSIONS

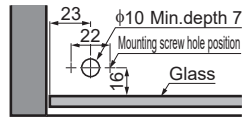


PROCESS DIMENSIONS

Glass
(with the dead bolt protruding down)



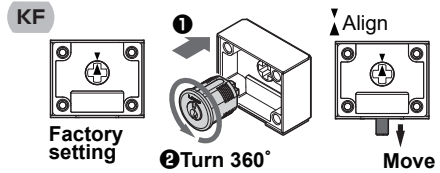
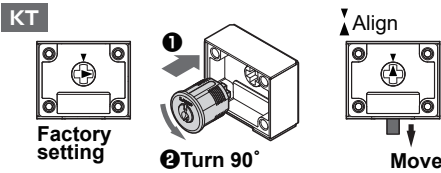
Bottom board



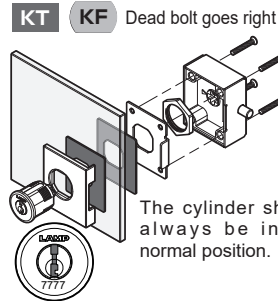
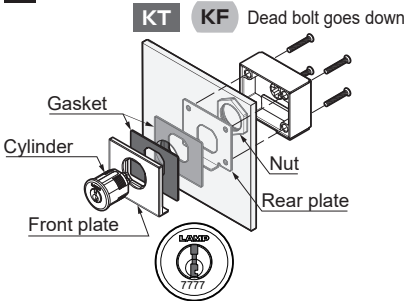
INSTALLATION

KT Key is not removable when unlocked. **KF** Key is removable when unlocked.

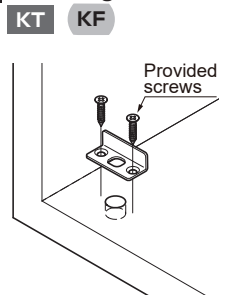
1 Moving the Dead Bolt



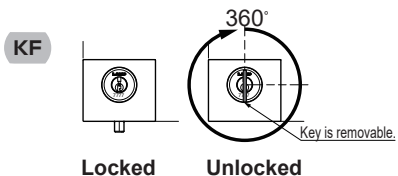
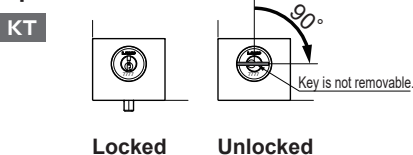
2 Assembly



3 Mounting of Strike



4 Operation Check



SUGATSUNE KOGYO CO.,LTD
Tokyo, JAPAN

Manufacturer of **LAMP** brand Products

Phone: +81 (0)3 3866 2260 E-mail: export@sugatsune.co.jp

2020.03 1388-1