

**GLASS DOOR CAM LOCK GS-GL5W For Double Swing Doors/Million Lock Series**

INSTRUCTION



Application	Door Material	Key Changes	Master Key	When Unlocked	Total Lock
<b>Double swing doors</b>	Glass	Max. 1 million	—	The key is not removable	Million Lock Series

\*Max. 2,520 changes per master key (made to order)

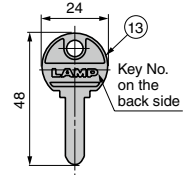
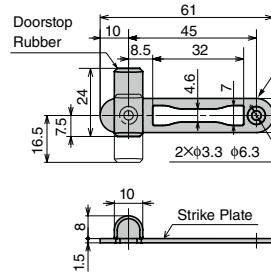
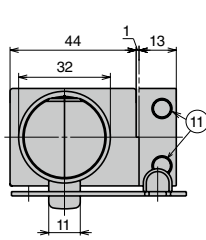
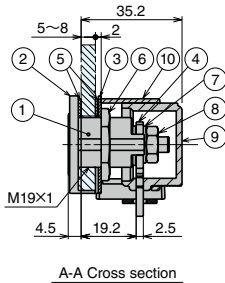
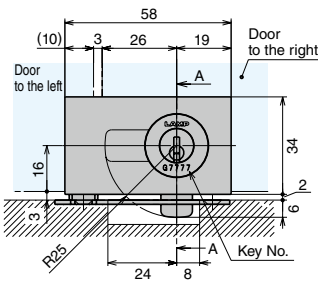
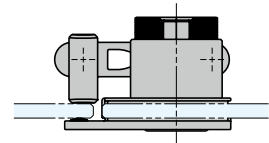
- A perfect cylinder lock for glass showcases.
- Recommended for use with the glass hinge GS-GH5 1 and bracket GS-GB5 2 for total design coordination.
- The keys are dimple type and reversible.
- Unlocks when the key is turned 90° clockwise. (The lock plate also rotates 90°)
- Comes with a door stopper which allows for 8-level depth adjustment.

**[Remarks]**

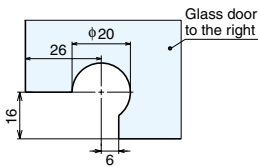
- The direction of the lock plate cannot be changed.
- Shatterproof films are recommended to be used on glass doors for safety.

**[Parts Included]**

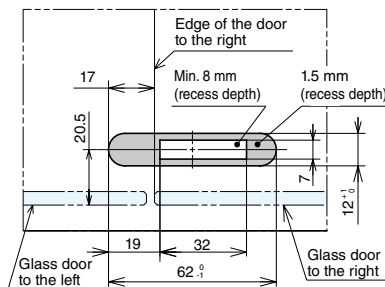
- Doorstop strike plate, GS-GL5HTU
- Countersunk head wood screw 2.7 × 13
- Keys



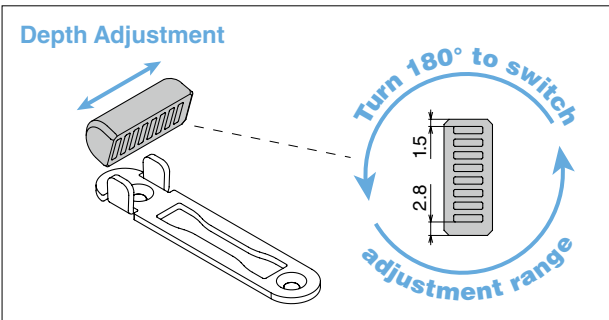
**[Cut Out Dimensions]**



**[Installation Dimensions]**



**[8-level Depth Adjustment]**



Allows for 4-level depth adjustment by changing the slits to insert. When turned 180°, additional 4-level adjustment are available. (Total 8-level)

No.	Part name	Material	Finish/Colour		
			CR	GP	BL
①	Body	Brass	Chrome	Gold (24K) Plated	Black
②	Front Plate	Zinc Alloy (ZDC)			
③	Back Plate				
④	Lock Plate	Stainless Steel (SUS304)	Mirror		
⑤	Gasket	Chloroprene Rubber (CR)	Black		
⑥	Hex Nut	Steel	Silver		
⑦	Washer				
⑧	Hex Nut				
⑨	Cover	Polypropylene (PP)	Black		
⑩	Ring				
⑪	Bumper	Stainless Steel (SUS304)	Plain		
⑫	Doorstop Strike Plate	Stainless Steel (SUS403)/EPDM			
⑬	Key	Brass	Nickel		

RoHS	CAD	Item Code	Item Name	Finish/Colour	Key Type	Glass Thickness	Key Removal*	Key Rotation Angle	Box (pcs)	Carton (pcs)
✓	2D3D	150-043-982	GS-GL5W-CR-B	Chrome	Key Different	5-8	Only one area	90°	12	60
✓	2D3D	150-001-151	GS-GL5W-CR-D		Key Alike				12	60
✓	2D3D	150-043-984	GS-GL5W-GP-B	Gold (24K Plated)	Key Different				12	60
✓	2D3D	150-001-152	GS-GL5W-GP-D		Key Alike				12	60
✓	2D3D	150-043-986	GS-GL5W-BL-B	Black	Key Different				12	60
✓	2D3D	150-001-153	GS-GL5W-BL-D		Key Alike				12	60

Refer to 1 2 : No.240A P.367-3

\*Key cannot be removed when unlocked