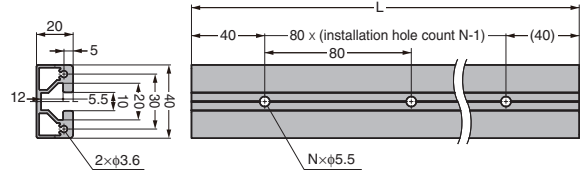


ALUMINIUM FRAME

FSL-L



- Optional Parts**
- FSL-EC End Cap
 - FSL-S4 Stopper



CAD	Item Code	Item Name	L	Installation Hole Count N	Material	Finish	Weight (g)	Box
	190-042-162	FSL-L400	400	5	Aluminium Alloy	Silver Anodising	333	30 pcs
	190-042-163	FSL-L800	800	10			665	15 pcs
	190-042-164	FSL-L1200	1200	15			998	9 pcs
	190-042-165	FSL-L2000	2000	25			1663	6 pcs

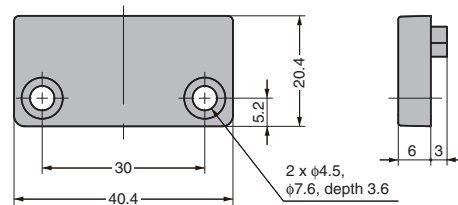
END CAP

FSL-EC



- Features**
- End cap for the FSL-L Aluminium Frame.

- Parts Included**
- Size 4 x 8 cross-recessed pan head tapping screws



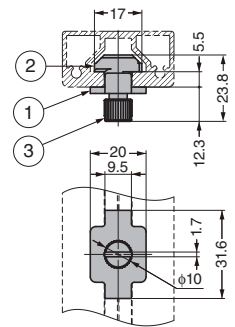
CAD	Item Code	Item Name	Material	Colour	Weight (g)	Box
	190-042-166	FSL-EC	ABS Resin	Grey	3.1	200 pcs

STOPPER

FSL-S4



- Features**
- A stopper for the FSL-L Aluminium Frame.
 - Can also be used with other companies' aluminium frames that are over 40 mm in width. Please see the drawing of the FSL-V36 for details.



No.	Part Name	Material	Finish/Colour
①	Body	SPCC	Chrome Plating
②	AS Nut	Stainless Steel (SUS316)	Barrel Polished
③	Knurled Knob	Steel	Nickel Plating

CAD	Item Code	Item Name	Weight (g)	Box
	190-042-167	FSL-S4	22	200 pcs

MONITOR MOUNTING BRACKET

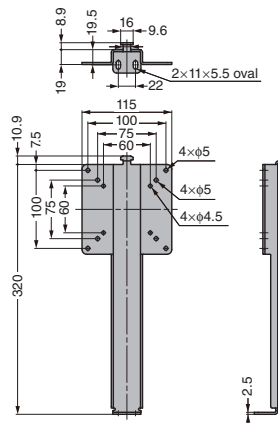
FSL-MB



Application



Used with FSL-V36 and KA-T100S50



- Features**
- Enables mounting of monitors with hole pitch compliant with the VESA standard (75 x 75 mm, 100 x 100 mm).
 - The KA-T100S50, a monitor mount can also be mounted to the FSL-V36, an adjustable mount.

- Sold Separately**
- KA-T100S50, Monitor Mount



*Angle adjustment: 180° swiveling, and 40° tilting

CAD	Item Code	Item Name	Material	Finish/Colour	Weight (g)	Box
	190-042-161	FSL-MB	Steel (SPCC)	Enamel Silver	566	20 pcs