

ADJUSTABLE MOUNT

INSTRUCTION

FSL-V36



Features

- Holds at any height on aluminium frames.
- The cover prevents unintentional lock release.
- Designed for use with the FSL-L, an aluminium frame. Can also be used with other companies' aluminium frames that are over 40 mm in width. Please see the drawing below for details.
- The locking mechanism prevents only downward motion.
- Can be installed to an aluminium frame that is already assembled.
- A monitor can be mounted on the FSL-V36 when used with the FSL-MB, an optional monitor-mounting bracket.

Application

Control panels, monitors

Remarks

- It is recommended to use one per frame.
- Please use only with vertical sliding applications.

Parts Included

- Hex bar spanner (nominal 2.5)

Optional Parts

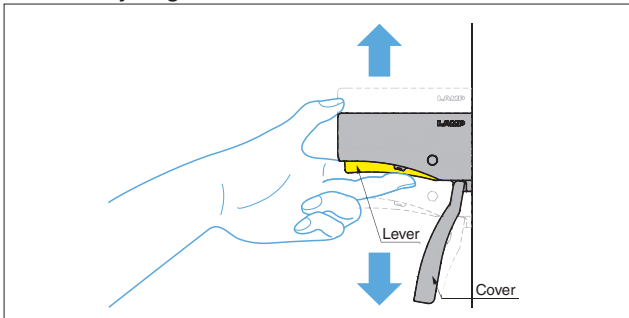
- FSL-MB, Monitor Mounting Bracket
- FSL-L, Aluminium Frame

Recommended Screw

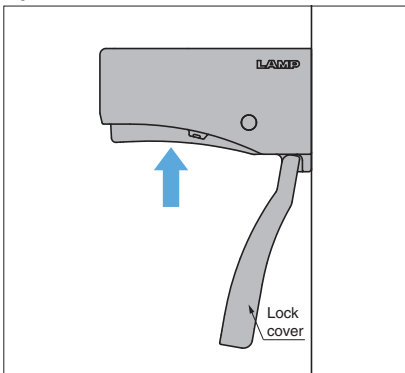
M5 screws



Holds at any height

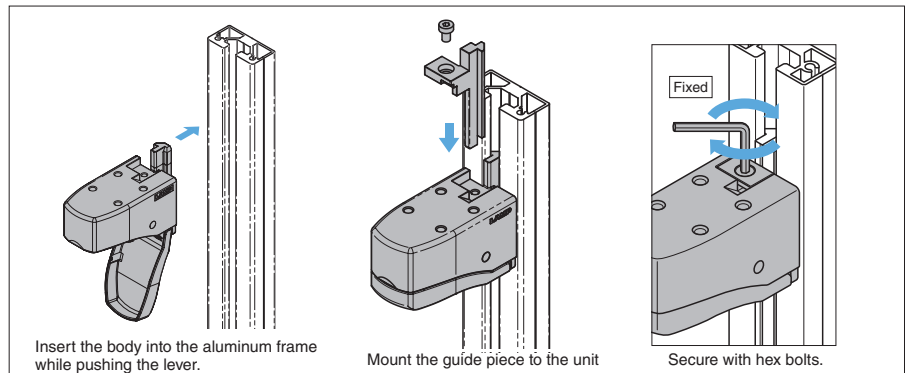


Operation

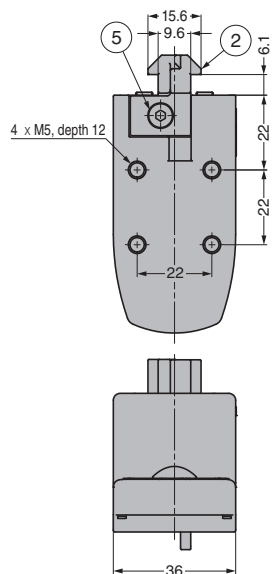


Open the cover and push the lever to move the unit up or down. The unit stops where the lever is released.

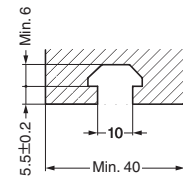
Installation



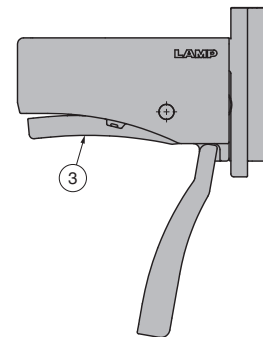
Can be installed to an aluminium frame that is already assembled. (see the instruction manual for details)



Mountable Aluminium Frame



When cover is opened



No.	Part Name	Material	Finish/Colour
①	Main Body		
②	Guide Piece	Zinc Alloy (ZDC)	Satin Chrome Plating
③	Lever		
④	Lock Cover	ABS Resin	White
⑤	Hexagonal socket cap low head bolt M4×6	Stainless Steel	Plain

RoHS	CAD	Item Code	Item Name	Vertical Load Capacity N	Vertical Load Capacity kgf	Allowable Moment N-m	Allowable Moment kgf-cm	Weight (g)	Box	Carton
Green	2D/3D	190-042-160	FSL-V36	117	12	20	204	310	1 pc	18 pcs

