

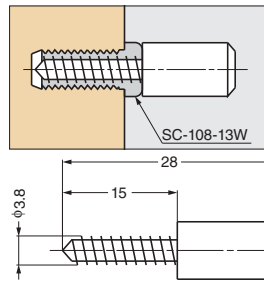
DOWEL

TEST METHOD 9

SS-311



Installation



Remarks

The description of load capacity is when used with SC-108-13W.

Sold Separately

SC-108-13W (P.191)

Item Code	Item Name	Material	Finish	Load Capacity	Weight	Box	Carton
120-041-400	SS-311	Steel	Nickel	196 N/4 pcs 20 kgf/4 pcs	5.1 g	500 pcs	2500 pcs

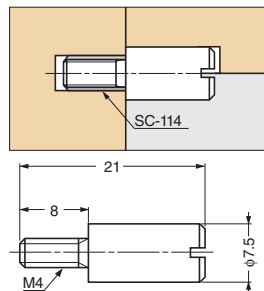
DOWEL

TEST METHOD 9

SS-309



Installation



Remarks

The description of load capacity is when used with SC-114.

Sold Separately

SC-114 (P.191)

Item Code	Item Name	Material	Finish	Load Capacity	Weight	Box	Carton
120-041-332	SS-309	Steel	Nickel	245 N/4 pcs 25 kgf/4 pcs	5 g	500 pcs	5000 pcs

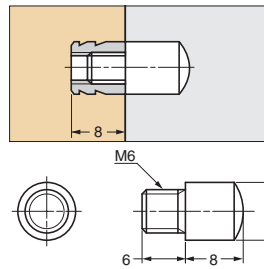
DOWEL

TEST METHOD 9

SS-319



Installation



Recommended Mounting Hole

φ8

Item Code	Item Name	Material	Finish	Load Capacity	Weight	Box
120-041-338	SS-319M (Dowel)	Brass	Nickel	196 N/4 pcs 20 kgf/4 pcs	4.2 g	500 pcs
120-041-339	SS-319W (Catch)	Brass	Nickel	196 N/4 pcs 20 kgf/4 pcs	1.4 g	1000 pcs

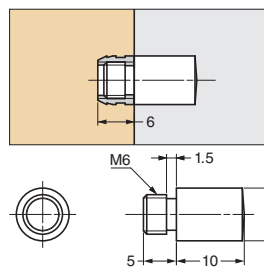
DOWEL

TEST METHOD 9

SS-108



Installation



Recommended Mounting Hole

φ8

Item Code	Item Name	Material	Finish	Load Capacity	Weight	Box
120-049-341	SS-108M (Dowel)	Brass	Bronze	196 N/4 pcs 20 kgf/4 pcs	5.5 g	500 pcs
120-049-342	SS-108W (Catch)	Brass	Bronze	196 N/4 pcs 20 kgf/4 pcs	5.5 g	1000 pcs