

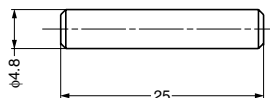
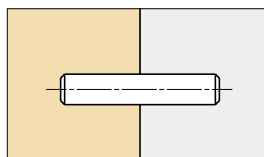
## DOWEL

TEST METHOD 9

## SS-313



### Installation



### Remarks

The value of load capacity is based on 12.5 mm depth mounting hole.

### Recommended Mounting Hole

$\phi 5$

### Remarks

1 pack includes 800 pieces

| Item Code   | Item Name   | Material | Finish | Load Capacity |              | Weight | Box    | Carton  |
|-------------|-------------|----------|--------|---------------|--------------|--------|--------|---------|
| 120-038-199 | SS-313-P800 | Steel    | Nickel | 196 N/4 pcs   | 20 kgf/4 pcs | 3.5 g  | 1 pack | 5 packs |

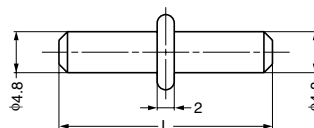
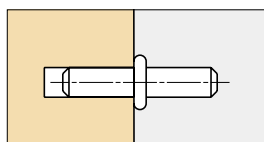
## DOWEL

TEST METHOD 9

## SS-312



### Installation



### Recommended Mounting Hole

$\phi 5$

### Remarks

1 pack includes 500 pieces

| Item Code   | Item Name      | Material | Finish | L  | Load Capacity |              | Weight | Box    | Carton   |
|-------------|----------------|----------|--------|----|---------------|--------------|--------|--------|----------|
| 120-038-197 | SS-312-18-P500 | Steel    | Nickel | 18 | 196 N/4 pcs   | 20 kgf/4 pcs | 3 g    | 1 pack | 10 packs |
| 120-038-198 | SS-312-25-P500 | Steel    | Nickel | 25 | 245 N/4 pcs   | 25 kgf/4 pcs | 4 g    | 1 pack | 10 packs |

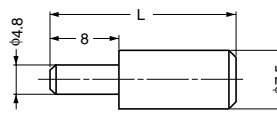
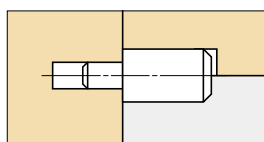
## DOWEL

TEST METHOD 9

## SS-310



### Installation



### Recommended Mounting Hole

$\phi 5$

### Remarks

1 pack includes 500 pieces

| Item Code   | Item Name      | Material | Finish | L  | Load Capacity |              | Weight | Box    | Carton   |
|-------------|----------------|----------|--------|----|---------------|--------------|--------|--------|----------|
| 120-038-195 | SS-310-18-P500 | Steel    | Nickel | 18 | 147 N/4 pcs   | 15 kgf/4 pcs | 5 g    | 1 pack | 10 packs |
| 120-038-196 | SS-310-23-P500 | Steel    | Nickel | 23 | 147 N/4 pcs   | 15 kgf/4 pcs | 6 g    | 1 pack | 10 packs |