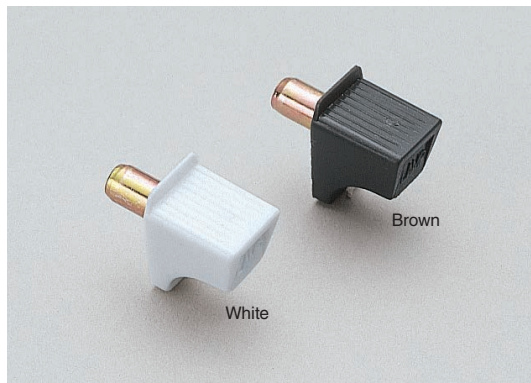


DOWEL

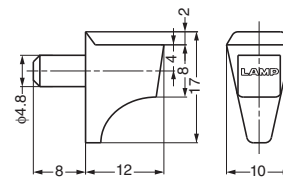
TEST METHOD 9

SS-323



Recommended Mounting Hole

φ5

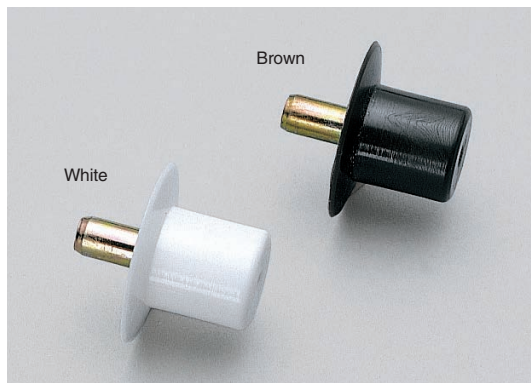


Item Code	Item Name	Material	Colour	Load Capacity	Weight	Box	Carton
120-041-326	SS-323W	Polyamide (PA) (w/ Steel Shaft)	White	392 N/4 pcs 40 kgf/4 pcs	3.4 g	500 pcs	5000 pcs
120-041-327	SS-323BR	Polyamide (PA) (w/ Steel Shaft)	Brown	392 N/4 pcs 40 kgf/4 pcs	3.4 g	500 pcs	5000 pcs

DOWEL

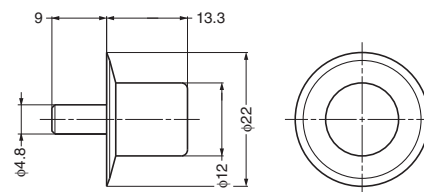
TEST METHOD 9

SS-324



Recommended Mounting Hole

φ5



Item Code	Item Name	Colour	Material	Load Capacity	Weight	Box	Carton
120-041-360	SS-324W	White	Polyamide (PA) (w/ Steel Shaft)	294 N/4 pcs 30 kgf/4 pcs	4 g	300 pcs	3000 pcs
120-041-361	SS-324BR	Brown	Polyamide (PA) (w/ Steel Shaft)	294 N/4 pcs 30 kgf/4 pcs	4 g	300 pcs	3000 pcs

DOWEL

TEST METHOD 9

SS-307

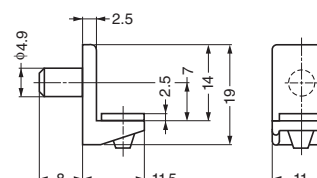


Recommended Mounting Hole

φ5

Remarks

1 pack includes 500 pieces



Item Code	Old Item Code	Item Name	Old Item Name	Material	Colour	Load Capacity	Weight	Pack	Box	Carton
120-038-194	120-041-320	SS-307W-P500	SS-307W	Polyamide (PA) (w/o Rubber)	White	98 N/4 pcs 10 kgf/4 pcs	0.9 g	500 pcs	1 pack	10 packs
120-038-193	120-041-321	SS-307BR-P500	SS-307BR	Polyamide (PA) (w/o Rubber)	Brown	98 N/4 pcs 10 kgf/4 pcs	0.9 g	500 pcs	1 pack	10 packs
120-038-192	120-041-328	SS-307B-P500	☆SS-307B	Polyamide (PA) (w/o Rubber)	Black	98 N/4 pcs 10 kgf/4 pcs	0.9 g	500 pcs	1 pack	10 packs
120-037-148	120-041-329	SS-307WG-P500	SS-307WG	Polyamide (PA) (w/ Rubber)	White	98 N/4 pcs 10 kgf/4 pcs	0.9 g	500 pcs	1 pack	10 packs
120-037-147	120-041-330	SS-307BRG-P500	SS-307BRG	Polyamide (PA) (w/ Rubber)	Brown	98 N/4 pcs 10 kgf/4 pcs	0.9 g	500 pcs	1 pack	10 packs
120-037-146	120-041-331	SS-307BG-P500	☆SS-307BG	Polyamide (PA) (w/ Rubber)	Black	98 N/4 pcs 10 kgf/4 pcs	0.9 g	500 pcs	1 pack	10 packs

☆Limited stock available. Please contact your vender.

