

# BRASS DOUBLE HOOK (BRASS NOUVEAU SERIES)

TEST METHOD 19



## PXB-BN05



A design which grows thicker as it approaches its end points. Built with a thick and luxurious amount of brass. A design which harmonizes both classical and modernist styles.

### Features

- The hooking end points are spherical, making it safer to use and decreasing the possibility of accidental injury.
- Meticulously manufactured to be very strong but appear delicate.

### Remarks

The finish of the product may vary as the surface processing is affected by the individual properties of the material.

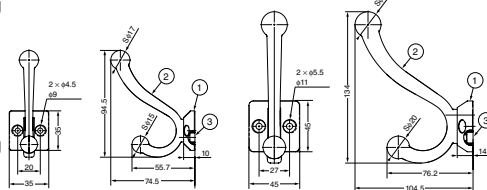
Enjoy the unique style of your own product.

### Parts Included

- PXB-BN05-211: Size 4 x 20 cross-recessed pan head tapping screws

No.	Part Name	Material
①	Base	Brass
②	Arm	
③	Hex Socket Bolts	Steel

- PXB-BN05-231: Size 5 x 25 cross-recessed pan head tapping screws



### Variations



CAD	Item Code	Item Name	Material	Finish/Colour	Load Capacity N	Load Capacity kgf	Weight (g)
2D/3D	110-043-564	PXB-BN05-211-BM	Matte Black	Nickel Plating / Blasted Metal	83	8.5	165
2D/3D	110-043-565	PXB-BN05-211-PB		Polished / Polished Brass			
2D/3D	110-043-566	PXB-BN05-211-SB		Satin Finish / Satin Brass			
2D/3D	110-043-567	PXB-BN05-211-AB		Antique Brass Plating / Antique Brass			
2D/3D	110-043-568	PXB-BN05-211-BL		Coating / Matte Black			
2D/3D	110-043-582	PXB-BN05-231-BM	Matte Black	Nickel Plating / Blasted Metal	147	15	415
2D/3D	110-043-583	PXB-BN05-231-PB		Polished / Polished Brass			
2D/3D	110-043-584	PXB-BN05-231-SB		Satin Finish / Satin Brass			
2D/3D	110-043-585	PXB-BN05-231-AB		Antique Brass Plating / Antique Brass			
2D/3D	110-043-586	PXB-BN05-231-BL		Coating / Matte Black			

# BALL HOOK

TEST METHOD 4

## PXB-QL05-111



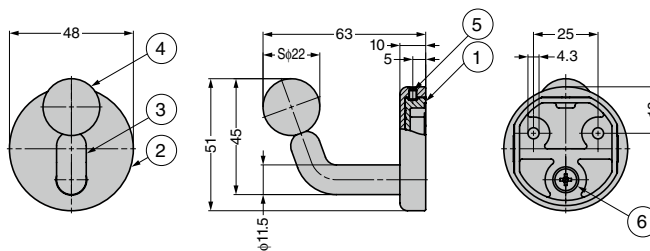
A curved hook with a ball end. The appearance looks almost as if the ball is gently floating at the end, giving a warm feeling to your interior.

### Features

- Mounting screws are not visible, giving a seamless look.
- Rounded design is safe with no sharp corners.
- The matte black finish is coated with a special chromate. This type combines the desirable glossiness of paint with the unique strength of plating.

### Parts Included

Size 4 x 32 cross-recessed flat head tapping screws



### Variations



No.	Part Name	Material	Finish
①	Base	Zinc Alloy (ZDC)	See the table
②	Base Cover		
③	Arm		
④	Ball		
⑤	Hexagon Socket Set Screws	Steel	Trivalent Chromate Finish
⑥	Cross-Recessed Flat Head Screws		

CAD	Item Code	Item Name	Material	Finish/Colour	Load Capacity N	Load Capacity kgf	Weight (g)	Box (pcs)
2D/3D	110-037-955	PXB-QL05-111-CR	Zinc Alloy (ZDC)	Chrome Plating	100	10.2	160	8
2D/3D	110-037-956	PXB-QL05-111-GP		24K Gold Plating				8
2D/3D	110-037-957	PXB-QL05-111-BL		Chromate Finish/Matte Black				8