

## STAINLESS STEEL HANDLE

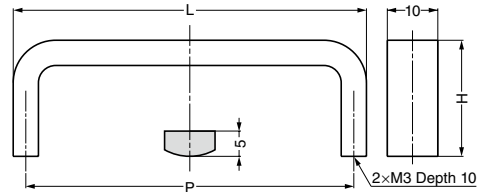


## KB-SUS304

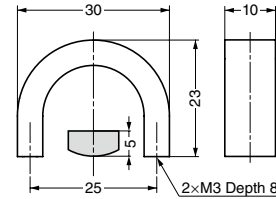


### Parts Included

Truss head screw M3x28 (SUS)



KB-50, KB-70, KB-90



KB-30

Item Code	Item Name	Material	Finish	L	H	P	Weight	Box	Carton
100-904-581	KB-30S-SUS304	Stainless Steel (SUS304)	Satin	As Above			22 g	40 pcs	400 pcs
100-904-580	KB-30M-SUS304	Stainless Steel (SUS304)	Mirror	As Above			22 g	40 pcs	400 pcs
100-904-583	KB-50S-SUS304	Stainless Steel (SUS304)	Satin	50	22	45	29 g	30 pcs	300 pcs
100-904-582	KB-50M-SUS304	Stainless Steel (SUS304)	Mirror	50	22	45	29 g	30 pcs	300 pcs
100-904-585	KB-70S-SUS304	Stainless Steel (SUS304)	Satin	70	22.5	65	35 g	30 pcs	300 pcs
100-904-584	KB-70M-SUS304	Stainless Steel (SUS304)	Mirror	70	22.5	65	35 g	30 pcs	300 pcs
100-904-587	KB-90S-SUS304	Stainless Steel (SUS304)	Satin	90	23	85	44 g	20 pcs	200 pcs
100-904-586	KB-90M-SUS304	Stainless Steel (SUS304)	Mirror	90	23	85	44 g	20 pcs	200 pcs

## STAINLESS STEEL HANDLE

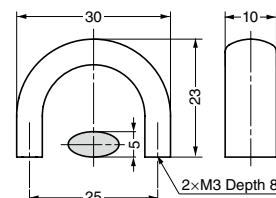


## DS-SUS304

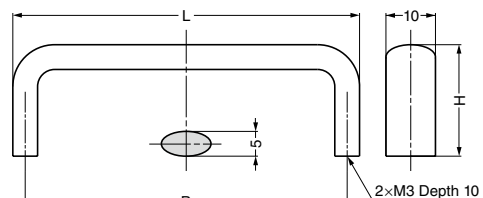


### Parts Included

Truss head screw M3x28 (SUS)



DS-30



DS-50, DS-70, DS-90

Item Code	Item Name	Material	Finish	L	H	P	Weight	Box	Carton
100-904-573	DS-30S-SUS304	Stainless Steel (SUS304)	Satin	As Above			19 g	40 pcs	400 pcs
100-904-572	DS-30M-SUS304	Stainless Steel (SUS304)	Mirror	As Above			19 g	40 pcs	400 pcs
100-904-575	DS-50S-SUS304	Stainless Steel (SUS304)	Satin	50	22	45	26 g	30 pcs	300 pcs
100-904-574	DS-50M-SUS304	Stainless Steel (SUS304)	Mirror	50	22	45	26 g	30 pcs	300 pcs
100-904-577	DS-70S-SUS304	Stainless Steel (SUS304)	Satin	70	22.5	65	32 g	30 pcs	300 pcs
100-904-576	DS-70M-SUS304	Stainless Steel (SUS304)	Mirror	70	22.5	65	32 g	30 pcs	300 pcs
100-904-579	DS-90S-SUS304	Stainless Steel (SUS304)	Satin	90	23	85	37 g	20 pcs	200 pcs
100-904-578	DS-90M-SUS304	Stainless Steel (SUS304)	Mirror	90	23	85	37 g	20 pcs	200 pcs

HANDLES,  
PULLS & KNOBS

STAINLESS STEEL HANDLE