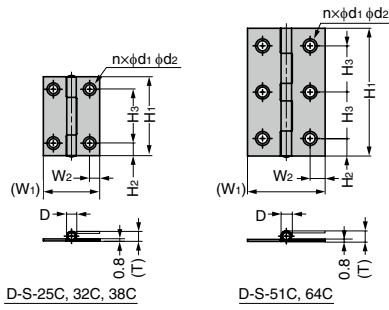
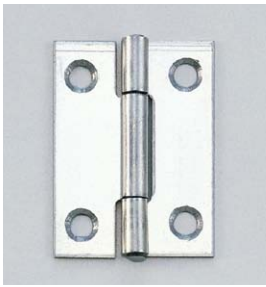


### BUTT HINGE D-S-C

SUS



**[Remarks]**

- Dimensions in the following drawing are for reference. Please confirm with actual item when installing.
- When installing this hinge to sheet metal, be sure to perform thread relief processing (chamfering) on the mounting surface side (cabinet side). In this way, screw head will not protrude when the hinge is fixed.
- Product movement and edge processing vary. Please check with actual item.
- Load capacity is the value when using two hinges. For calculation conditions, please refer to INDEX 1.

**[Parts Included]**

- Countersunk head wood screw (SUS)

RHS	CAD	Item Code	Item Name	Material	Finish	H <sub>1</sub>	H <sub>2</sub>	H <sub>3</sub>	W <sub>1</sub>	W <sub>2</sub>	D	T	d <sub>1</sub>	d <sub>2</sub>	Knuckles	Holes n	Screw	Load Capacity N/2 pcs	Load Capacity kgf/2 pcs	Weight (g)	Box (pcs)	Carton (pcs)
3D	170-090-277	D-S-25C	Stainless Steel (SUS430)	Polished	25.5	5	15.5	21	3.5	3.8	3.8	3.5	5.1	3	4	2.4x10	20	2	4.4	100	3000	
3D	170-090-278	D-S-32C			31.5	21.5	22.5	4	3.8	3.8	3.5	5.7					100	3000				
3D	170-090-279	D-S-38C	Steel (SUS430)	Polished	38	5.5	27	26	5	3.9	3.9	3.8	5.6	5	6	2.7x13 2.7x16	49	5	12.9	50	2000	
3D	170-090-280	D-S-51C			51	7	18.5	31	6	4.2	4.2	4					50	1500				
3D	170-090-281	D-S-64C			64	9	23	33	6.2	4.2	4.2	4					50	1000				

Refer to 1 : P.15

TORQUE HINGES

DAMPER HINGES

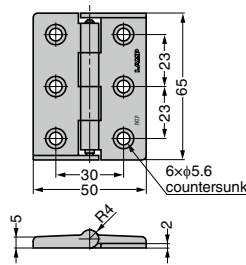
LIFT ASSIST HINGES

DETENT HINGES

CONCEALED HINGES

### BUTT HINGE HG-BF1

SUS



- Rim on edges may reduce load.
- Rim on edges may reduce warpage and increase strength.
- Rim on edges prevents shaft from falling off.

**[Remarks]**

- Load capacity is the value when using two hinges. For calculation conditions, please refer to INDEX 1.

RHS	CAD	Item Code	Item Name	Material	Finish	Load Capacity N/2 pcs	Load Capacity kgf/2 pcs	Weight (g)	Box (pcs)	Carton (pcs)
3D	170-091-560	HG-BF1	Stainless Steel (SUS304)	Barrel Polished	157	16	63	20	120	

Refer to 1 : P.15

PIANO HINGES

STEP HINGES

LIFT-OFF HINGES

PIVOT HINGES

SPRING HINGES

CLEAN ROOM HINGES

HINGES FOR ALUMINIUM FRAME

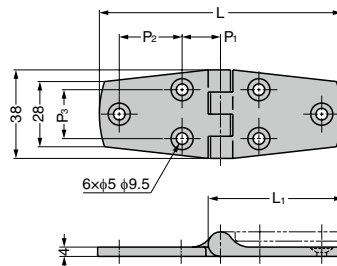
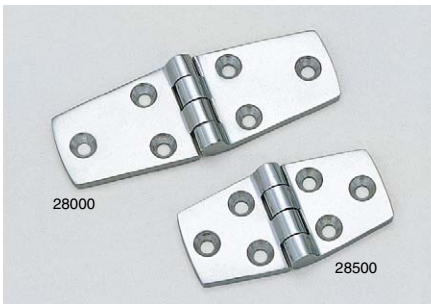
DROP HINGES

GLASS DOOR HINGES

SPECIAL HINGES

### BUTT HINGE 28000, 28500

SUS316



**[Remarks]**

- Recommended for use in pairs.
- Load capacity is the value when using two hinges. For calculation conditions, please refer to INDEX 1.

RHS	CAD	Item Code	Item Name	Material	Finish	L	L <sub>1</sub>	P <sub>1</sub>	P <sub>2</sub>	P <sub>3</sub>	Door Width	Door Height	Door Thickness	Load Capacity N/2 pcs	Load Capacity kgf/2 pcs	Weight (g)	Box (pcs)	Carton (pcs)
3D	170-096-002	28500	Stainless Steel (SCS14)	Polished	74	42	13	17	20	Max.	Max.	Max.	167	17	85	20	100	
3D	170-096-003	28000			104	57	16.5	27	21						450	700	21	115

Refer to 1 : P.15

※SCS14 is equivalent of SUS316.