

STAINLESS STEEL VENTILATOR



480970



480970

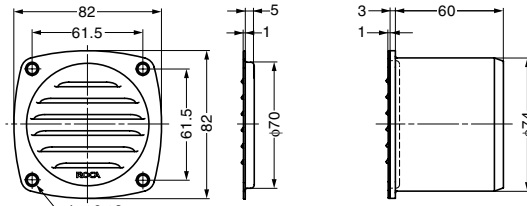
480966 (Optional Parts)



480970 with adaptor

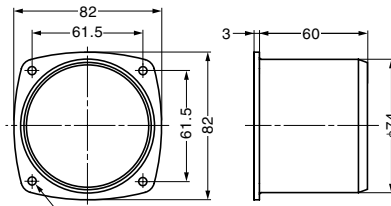
Features

- Made of SUS316 for excellent corrosion resistance.
- Can be used with adaptor (optional parts).



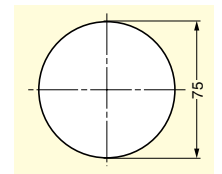
Ventilator

With adaptor



Adaptor

Cut Out Dimensions



Ventilator Body

Item Code	Item Name	Material	Finish	Max. Exhaust Area	Weight	Carton
210-028-877	480970	Stainless Steel (SUS316)	Satin	≈ 1600 mm ²	51 g	300 pcs

Adaptor (Optional Parts)

Item Code	Item Name	Material	Colour	Weight	Carton
210-028-878	480966	Polyamide (PA)	White	51 g	100 pcs

VENTILATOR



4872



487220

487200

When ventilating



Push the knob.

When un-ventilating



Pull the knob.

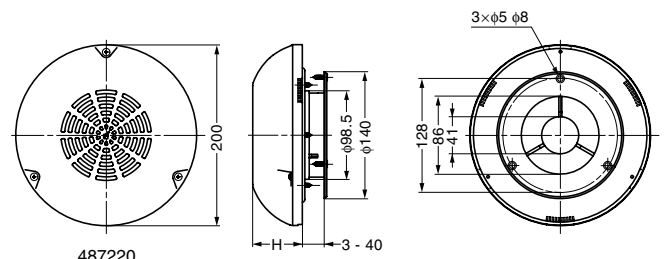
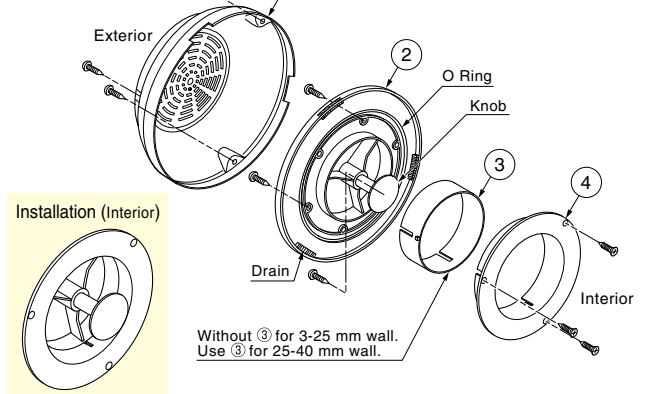
Features

- Can be used for the exterior due to the water protector.
- Can be used both for wooden wall and sheet metal wall. Please arrange the bolts and nuts when using with sheet metal.

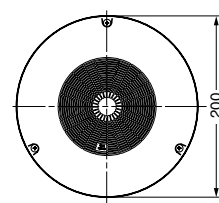
Parts Included

- Pan head tapping screw 4x12 (3 pcs) / for Cover ① on Base ②
- Pan head tapping screw 4x18 (3 pcs) / for Cover ② on the wall
- Raised countersunk head tapping screw 4x16 (3 pcs) / for Fringe ④ on the wall

Parts Details

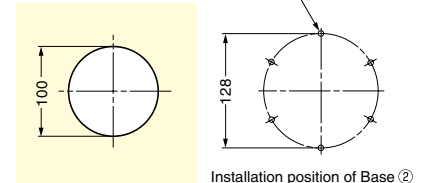


487220



487200

Cut Out Dimensions



Installation position of Base ②

Item Code	Item Name	Material	Colour	H	Wall Thickness	Max. Exhaust Area	Weight	Box	Carton
210-028-886	487220	Stainless Steel (SUS304)	Satin	55	3 - 40	≈ 3055 mm ²	490 g	1 pc	40 pcs
210-028-885	487200	Polypropylene (PP)	Off-white	62	3 - 40	≈ 5032 mm ²	420 g	1 pc	40 pcs

No.	Part Name	Material	Colour
①	Cover	See the left table	See the left table
②	Base	Polypropylene (PP)	Off-white
③	Adaptor	Polypropylene (PP)	Off-white
④	Flange	Polypropylene (PP)	Off-white