

STAINLESS STEEL ADJUSTABLE VENTILATOR

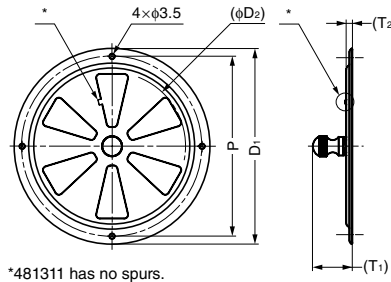
STAINLESS
304
STEEL

4813

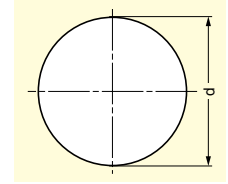


Features

- Air flow is adjustable by turning the knob.
- The knob is tight for anti-vibration.



Cut Out Dimensions



Item Code	Item Name	Material	Finish	D ₁	D ₂	P	T ₁	T ₂	d	Max. Exhaust Area	Weight	Carton
210-028-882	481311	Stainless Steel (SUS304)	Satin	102	77	92	24.4	2.7	77 - 80	≈ 1835 mm ²	61 g	300 pcs
210-028-881	481312	Stainless Steel (SUS304)	Satin	127	95	117	25.6	3.9	95 - 100	≈ 2860 mm ²	86 g	200 pcs

STAINLESS STEEL VENTILATOR

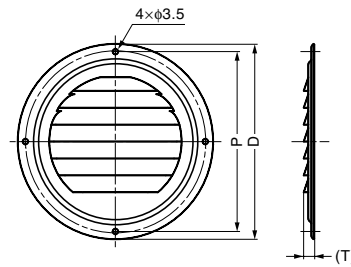
STAINLESS
304
STEEL

4814

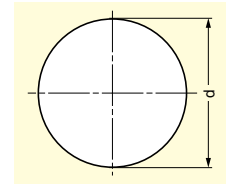


Optional Parts

Stainless steel ventilator cover 4818 (below).



Cut Out Dimensions



Item Code	Item Name	Material	Finish	D	P	T	d	Max. Exhaust Area	Weight	Carton
210-028-880	481440	Stainless Steel (SUS304)	Satin	102	92	5	77 - 80	≈ 750 mm ²	38 g	500 pcs
210-028-879	481430	Stainless Steel (SUS304)	Satin	127	117	7	95 - 100	≈ 1250 mm ²	59 g	300 pcs

STAINLESS STEEL VENTILATOR COVER

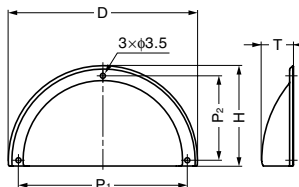
STAINLESS
304
STEEL

4818

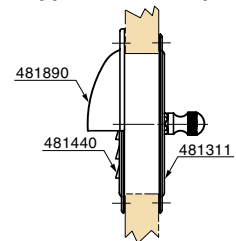


Features

For 4814 ventilator (above), prevents influx of rainwater.



Application Example



Item Code	Item Name	Use With	Material	Finish	D	H	P ₁	P ₂	T	Weight	Carton
210-028-884	481890	481440 (Above)	Stainless Steel (SUS304)	Satin	107	57	92	46	20	40 g	300 pcs
210-028-883	481850	481430 (Above)	Stainless Steel (SUS304)	Satin	131	69	117	58.5	22	60 g	300 pcs