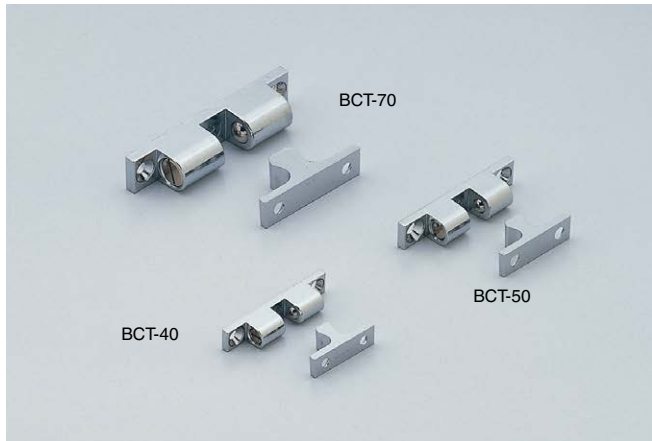


TENSION CATCH

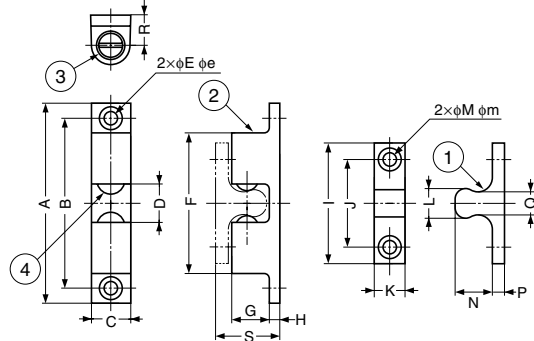
TEST METHOD 10

BCT



Features

Can be installed vertically or horizontally.



No.	Part Name	Material	Finish
①	Counter Plate	Zinc Alloy (ZDC)	Chrome
②	Body	Zinc Alloy (ZDC)	Chrome
③	Cover	Brass	Nickel
④	Ball	Steel	Polished
-	Spring	Steel	Plain

Item Code	Item Name	Push-in Force N	Push-in Force kgf	Pulling Force N	Pulling Force kgf	Weight	Box	Carton
140-050-108	BCT-40	43.1 N	4.4 kgf	29.4 N	3.0 kgf	16 g	100 pcs	400 pcs
140-050-107	BCT-50	40.2 N	4.1 kgf	32.3 N	3.3 kgf	26 g	100 pcs	400 pcs
140-050-106	BCT-70	45.1 N	4.6 kgf	34.3 N	3.5 kgf	70 g	50 pcs	200 pcs

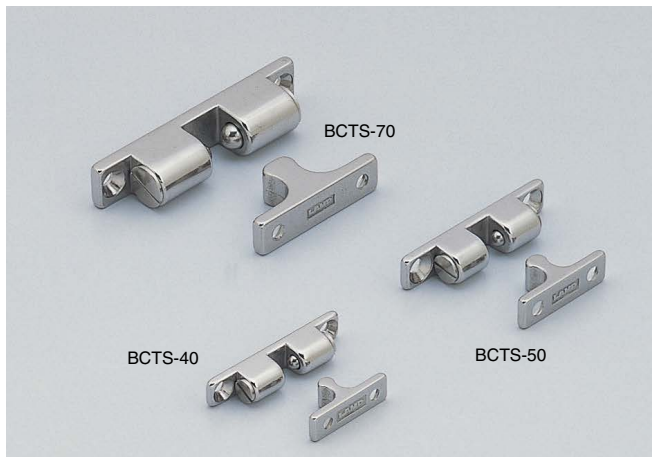
Item Name	A	B	C	D	E	e	F	G	H	I	J	K	L	M	m	N	P	Q	R	S
BCT-40	42.5	35	8	6.3	3.2	6.2	26.7	7.5	2.5	25	16	7.5	5.5	3.2	6.2	8.8	2.5	3.7	6.25	13.8
BCT-50	50	40	10	8.4	4.2	8.2	29.8	9.5	3	30	20	9	7.3	4.2	8.2	9.8	2.5	4.7	7.75	15.3
BCT-70	70	60	13.5	12	4.2	8.2	49	13	4	42	30	10.5	11	4.2	8.2	14.2	3	8.2	10.5	21.2

TENSION CATCH

TEST METHOD 10

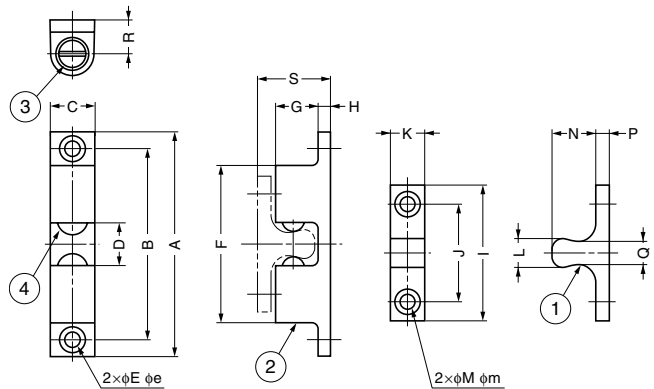
STAINLESS 316 STEEL

BCTS



Features

- Can be installed vertically or horizontally.
- High corrosion resistance due to SUS316 and SCS14.



No.	Part Name	Material	Finish
①	Counter Plate	Stainless Steel (SCS14)	Polished
②	Body	Stainless Steel (SUS316)	Plain
③	Cover	Stainless Steel (SUS316)	Mirror
④	Ball	Stainless Steel (SUS304)	Plain
-	Spring	Stainless Steel (SUS304)	Plain

\*SCS14 is equivalent of SUS316.

Item Code	Item Name	Push-in Force	Pulling Force	Weight	Box	Carton
140-050-242	BCTS-40	20 N / 2 kgf	13 N / 1.3 kgf	18 g	50 pcs	500 pcs
140-050-241	BCTS-50	23 N / 2.3 kgf	18 N / 1.8 kgf	30 g	50 pcs	500 pcs
140-050-240	BCTS-70	56 N / 5.7 kgf	38 N / 3.9 kgf	83 g	25 pcs	250 pcs

Item Name	A	B	C	D	E	e	F	G	H	I	J	K	L	M	m	N	P	Q	R	S
BCTS-40	43	35	8	5.9	3.2	6.2	28.4	7.5	2.5	25	16	7.5	4.5	3.2	6.2	8.5	2.5	2.7	6	13.5
BCTS-50	50	40	10	7.5	4.2	8.2	31.5	9.3	2.9	30	20	9	6	4.2	8.2	10.3	2.9	3.8	7.2	16.1
BCTS-70	70	60	13	13	4.2	8.2	51	13	4	42	30	10.5	10	4.2	8.2	15	4	8	10.5	23