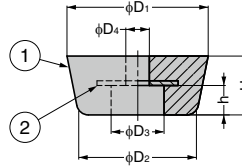


RUBBER FOOT K



- With washer.
- Hardness: 65



| No. | Material | Colour |
|-----|--------------------------------|--------|
| ① | Styrene-Butadiene Rubber (SBR) | Black |
| ② | Stainless Steel (SUS430) | - |

SPECIAL LEVELLING GLIDE

HEAVY DUTY LEVELLING GLIDES

MEDIUM-SIZED LEVELLING GLIDES

SMALL LEVELLING GLIDES

BASE FOR LEVELLING GLIDES

CASE FEET

BASE

| RoHS | CAD | Item Code | Old Item Code | Item Name | Old Item Name | D ₁ | D ₂ | H | D ₃ | D ₄ | h | Weight (g) | Pack(pcs) | Box (pack) | Carton (pack) |
|------|-----|-------------|---------------|-------------|---------------|----------------|----------------|----|----------------|----------------|----|------------|-----------|------------|---------------|
| RoHS | 3D | 200-038-123 | 200-140-445 | K-95-P100 | K-95 | 9 | 7 | 5 | 4 | 2 | 3 | 0.5 | 100 | 2 | - |
| RoHS | 3D | 200-038-094 | 200-140-420 | K-10-P100 | K-10 | 10 | 9 | 8 | 5 | | 4 | 1 | 100 | 2 | - |
| RoHS | 3D | 200-038-095 | 200-140-421 | K-12-P100 | K-12 | 12 | 8 | 9 | | | 5 | 1.5 | 100 | 2 | - |
| RoHS | 3D | 200-038-096 | 200-140-422 | K-15-P100 | K-15 | 15 | 14 | 8 | 6 | 3 | 5 | 2.5 | 100 | 2 | - |
| RoHS | 3D | 200-038-097 | 200-140-423 | K-1510-P100 | K-1510 | 15 | 10 | 10 | 5 | | 6 | 3 | 100 | 2 | - |
| RoHS | 3D | 200-038-098 | 200-140-424 | K-16-P100 | K-16 | 16 | 14 | 14 | 6 | | 7 | 3 | 100 | 2 | - |
| RoHS | 3D | 200-038-099 | 200-140-425 | K-18-P100 | K-18 | 18 | 15 | 11 | 7 | 4 | 5 | 3 | 100 | 2 | - |
| RoHS | 3D | 200-038-103 | 200-140-450 | K-209-P100 | K-209 | 20 | 16 | 9 | 3 | | 4 | 3.5 | 100 | 2 | - |
| RoHS | 3D | 200-038-101 | 200-140-451 | K-2010-P100 | K-2010 | 20 | 16 | 10 | 8 | | 7 | 4 | 100 | 2 | - |
| RoHS | 3D | 200-038-100 | 200-140-426 | K-20-P100 | K-20 | 20 | 15 | 12 | 7 | 4 | 7 | 4 | 100 | 2 | - |
| RoHS | 3D | 200-038-102 | 200-140-454 | K-2017-P100 | K-2017 | 20 | 15 | 17 | 3 | 8 | 8 | 5.5 | 100 | 2 | - |
| RoHS | 3D | 200-038-104 | 200-140-427 | K-22-P100 | K-22 | 22 | 18 | 24 | 7 | 3 | 11 | 10 | 100 | 2 | - |
| RoHS | 3D | 200-038-105 | 200-140-428 | K-23-P100 | K-23 | 23 | 19 | 14 | | | 5 | 6 | 100 | 2 | - |
| RoHS | 3D | 200-038-106 | 200-140-440 | K-2320-P100 | K-2320 | 23 | 20 | 20 | 8 | 4 | 10 | 9.5 | 100 | 2 | - |
| RoHS | 3D | 200-038-107 | 200-140-429 | K-24-P100 | K-24 | 24 | 10 | 10 | | | 5 | 5.5 | 100 | 2 | - |
| RoHS | 3D | 200-038-108 | 200-140-452 | K-259-P100 | K-259 | 25 | 19 | 9 | 10 | 5 | 5 | 5 | 100 | 2 | - |
| RoHS | 3D | 200-038-109 | 200-140-430 | K-26-P100 | K-26 | 26 | 20 | 15 | 9 | | 10 | 8 | 100 | 2 | - |
| RoHS | 3D | 200-038-110 | 200-140-431 | K-28-P100 | K-28 | 28 | 22 | 18 | 12 | 4 | 11 | 11 | 100 | 2 | - |
| RoHS | 3D | 200-038-111 | 200-140-432 | K-29-P100 | K-29 | 29 | 29 | 15 | | | 10 | 10 | 100 | 2 | - |
| RoHS | 3D | 200-038-112 | 200-140-433 | K-30-P100 | K-30 | 30 | 24 | 19 | 14 | | 10 | 13.5 | 100 | 2 | - |
| RoHS | 3D | 200-038-113 | 200-140-441 | K-3215-P100 | K-3215 | 30 | 28 | 15 | | | 5 | 14 | 100 | 2 | - |
| RoHS | 3D | 200-038-114 | 200-140-442 | K-3220-P100 | K-3220 | 32 | 26 | 20 | 15 | 5 | 10 | 16.5 | 100 | 2 | - |
| RoHS | 3D | 200-038-115 | 200-140-443 | K-3225-P100 | K-3225 | 32 | 28 | 25 | 14 | | 9 | 22.5 | 100 | 2 | - |
| RoHS | 3D | 200-038-116 | 200-140-434 | K-34-P100 | K-34 | 34 | 27 | 18 | 17 | | 10 | 16 | 100 | 2 | - |
| RoHS | 3D | 200-038-118 | 200-140-444 | K-3617-P100 | K-3617 | 36 | 20 | 17 | | 6 | 9 | 16.5 | 100 | 2 | - |
| RoHS | 3D | 200-038-117 | 200-140-435 | K-36-P100 | K-36 | 36 | 30 | 22 | 12 | 5 | 12 | 25 | 100 | 2 | - |
| RoHS | 3D | 200-038-119 | 200-140-436 | K-38-P100 | K-38 | 38 | 32 | 24 | | | 13 | 31 | 100 | 2 | - |
| RoHS | 3D | 200-038-120 | 200-140-437 | K-40-P100 | K-40 | 40 | 30 | 22 | 14 | | 9 | 28 | 100 | 2 | - |
| RoHS | 3D | 200-038-121 | 200-140-438 | K-45-P50 | K-45 | 45 | 35 | 27 | 12 | | 12 | 46 | 50 | 2 | - |
| RoHS | 3D | 200-038-122 | 200-140-439 | K-63-P50 | K-63 | 63 | 48 | 26 | 14 | 7 | 15 | 87.5 | 50 | 2 | - |

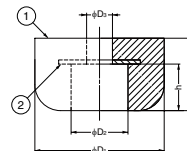
※The item names have been changed.

RUBBER FOOT SK



- With washer.
- Hardness: 65

| No. | Material | Colour |
|-----|--------------------------------|--------|
| ① | Styrene-Butadiene Rubber (SBR) | Black |
| ② | Stainless Steel (SUS430) | Plain |



| RoHS | CAD | Item Code | Old Item Code | Item Name | Old Item Name | D ₁ | D ₂ | D ₃ | H | h | Weight (g) | Pack (pcs) | Box (pack) | Carton (pack) |
|------|-----|-------------|---------------|--------------|---------------|----------------|----------------|----------------|----|---|------------|------------|------------|---------------|
| RoHS | 3D | 200-038-187 | 200-140-446 | SK-13-P100 | SK-13 | 13 | 6 | | 5 | 2 | 1 | 100 | 2 | - |
| RoHS | 3D | 200-038-188 | 200-140-447 | SK-156-P100 | SK-156 | 15 | 7 | 3 | 6 | 3 | 1.5 | 100 | 2 | - |
| RoHS | 3D | 200-038-189 | 200-140-448 | SK-1910-P100 | SK-1910 | 19 | 9 | 4 | 10 | 5 | 3.5 | 100 | 2 | - |
| RoHS | 3D | 200-038-190 | 200-140-449 | SK-1912-P100 | SK-1912 | 19 | 9 | 4 | 12 | 7 | 4.5 | 100 | 2 | - |
| RoHS | 3D | 200-038-191 | 200-140-453 | SK-2519-P100 | SK-2519 | 25 | 11 | 5 | 14 | 9 | 7 | 100 | 2 | - |

※The item names have been changed.