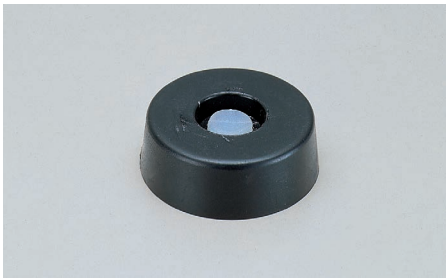
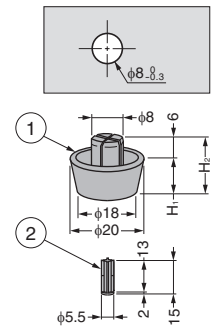


## CASE FOOT (PL TYPE) PL



- Easy installation by using locking pin.
- Improved work efficiency compared with screw fixing method.

[Cut Out Dimensions]



No.	Part Name	Material	Colour
①	Body	Elastomer (TPE)	Black
②	Pin	PP	-

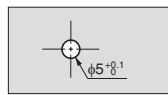
RoHS	CAD	Item Code	Item Name	H <sub>1</sub>	H <sub>2</sub>	Board Thickness	Weight (g)	Box (pcs)	Carton (pcs)
		200-149-085	PL-15	15	21	0.7~3.2	1.5	200	-

## CASE FOOT (A TYPE) FF

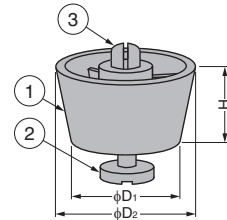


- Easy installation simply by spreading out rivet with threaded pin.
- Detachable with flat-head screwdriver.

[Cut Out Dimensions]



No.	Part Name	Material	Colour
①	Body	Elastomer (TPE)	Black
②	Threaded Pin	POM	
③	Rivet	PA	



RoHS	CAD	Item Code	Old Item Code	Item Name	Old Item Name	D <sub>1</sub>	D <sub>2</sub>	H	Board Thickness	Weight (g)	Pack (pcs)	Box (pack)	Carton (pack)
		200-038-085	200-149-066	FF-001-P20	FF-001	20	24	14	1~2.3	3.4	20	10	-
		200-038-087	200-149-151	FF-004-P20	FF-004	18	20	10		2.2	20	10	-

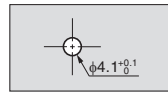
※ Limited stock available. Please contact your vender.

## CASE FOOT (B TYPE) FF

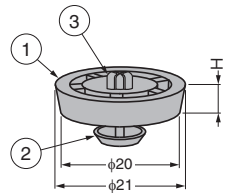


- Easy installation simply by spreading out rivet with threaded pin.

[Cut Out Dimensions]



No.	Part Name	Material	Colour
①	Body	Elastomer (TPE)	Black
②	Pin	PA	
③	Rivet		

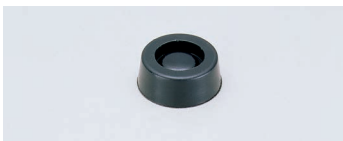


RoHS	CAD	Item Code	Old Item Code	Item Name	Old Item Name	H	Board Thickness※ <sup>1</sup>	Weight (g)	Pack (pcs)	Box (pack)	Carton(pack)
		200-038-088	200-140-482	FF-005-P20	FF-005	4.2	0.8~1.8	1.2	20	25	-
		200-038-090	200-149-063	FF-008-P20	FF-008	6		1.5	20	10	-
		200-038-091	200-049-389	FF-009-P20	FF-009	8	0.8~2	1.9	20	10	-

※ The item names have been changed.

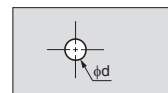
※<sup>1</sup>Models suitable for other thicknesses available by made to order.

## CASE FOOT (MINI TYPE) FF

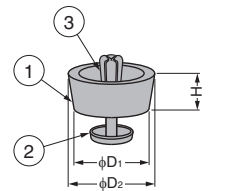


- Easy installation simply by spreading out rivet with threaded pin.

[Cut Out Dimensions]



No.	Part Name	Material	Colour
①	Body	Elastomer (TPE)	Black
②	Pin	PA	
③	Rivet		



RoHS	CAD	Item Code	Old Item Code	Item Name	Old Item Name	D <sub>1</sub>	D <sub>2</sub>	H	d	Board Thickness※ <sup>1</sup>	Weight (g)	Pack (pcs)	Box (pack)	Carton (pack)
		200-038-086	200-149-108	FF-003-P20	FF-003	13.5	14.2	5.5	$3.1^{+0.1}_0$	0.8~1	0.7	20	25	-
		200-038-089	200-149-086	FF-006-P20	FF-006	14	15	6	$4.1^{+0.1}_0$	1~2	0.9	20	25	-
		200-038-092	200-149-100	FF-010-P20	FF-010						9	1.2	20	25
		200-038-093	200-149-105	FF-013-P20	FF-013	10	10.8	4	$3.6^{+0.05}_0$	0.6~1	0.3	20	50	-

※ The item names have been changed.

※<sup>1</sup>Models suitable for other thicknesses available by made to order.