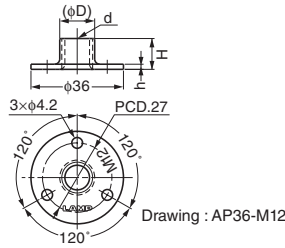


**STAINLESS STEEL GLIDE BASE**



**AP36**



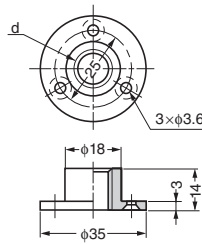
**Features**

Made of 304 stainless steel for rust and corrosion resistance.

Item Code	Item Name	Material	Finish	d	D	h	H	Weight	Box	Carton
200-140-501	AP36-M8	Stainless Steel (SUS304)	Polished	M8	9.6	1.5	12	13 g	100 pcs	1,000 pcs
200-140-502	AP36-M10	Stainless Steel (SUS304)	Polished	M10	11	1.5	12	13 g	100 pcs	1,000 pcs
200-140-503	AP36-N3	Stainless Steel (SUS304)	Polished	3/8-16UNC	10.9	1.5	12	13 g	100 pcs	1,000 pcs
200-140-504	AP36-M12	Stainless Steel (SUS304)	Polished	M12	13.9	2	11.5	19 g	80 pcs	800 pcs

**GLIDE BASE**

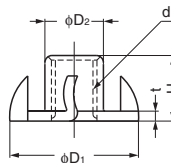
**AD-559**



Item Code	Item Name	Material	Finish	d	Weight	Box	Carton
200-141-310	AD-559M12	Zinc Alloy (ZDC)	Clear Zinc Chromate	M12	26.5 g	100 pcs	400 pcs
200-141-311	AD-559M14	Zinc Alloy (ZDC)	Clear Zinc Chromate	M14	23.5 g	100 pcs	400 pcs
200-140-073	AD-559U1/2	Zinc Alloy (ZDC)	Clear Zinc Chromate	1/2-20UNF	24.6 g	100 pcs	400 pcs

**GLIDE BASE**

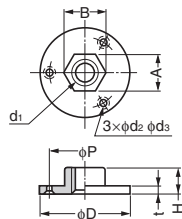
**SC-124**



Item Code	Item Name	Material	Finish	d	D <sub>1</sub>	D <sub>2</sub>	H	t	Weight	Carton
200-041-280	SC-124-4	Steel	Clear Zinc Chromate	M4	15	5.6	8	1.2	2.1 g	10,000 pcs
200-041-281	SC-124-6	Steel	Clear Zinc Chromate	M6	19	7.5	9	1.2	3.5 g	5,000 pcs
200-041-282	SC-124-8	Steel	Clear Zinc Chromate	M8	22.2	9.9	11	1.6	6.6 g	3,000 pcs
200-041-283	SC-124-10	Steel	Clear Zinc Chromate	M10	25.5	11.6	13	1.8	8.8 g	2,000 pcs

**GLIDE BASE**

**AD-555**



**Recommended Screw**

Countersunk nominal 3.1  
(AD-555-25 : Countersunk nominal 2.7)

Item Code	Item Name	Material	Finish	d <sub>1</sub>	D	H	t	P	d <sub>2</sub>	d <sub>3</sub>	A	B	Weight	Box	Carton
200-014-902	AD-555-25-M8	Zinc Alloy (ZDC)	Zinc Chromate	M8	25	8	2.7	19	3.2	5.3	11.2	12.5	10 g	320 pcs	1,920 pcs
200-140-076	AD-555-28-M10	Zinc Alloy (ZDC)	Zinc Chromate	M10	28	9	2.7	20	3.2	6.4	13	14	15 g	240 pcs	1,440 pcs
200-140-074	AD-555-25	Zinc Alloy (ZDC)	Zinc Chromate	W5/16	25	8	2.7	19	3.2	5.3	11.2	12.5	10 g	320 pcs	1,920 pcs
200-140-075	AD-555-28	Zinc Alloy (ZDC)	Zinc Chromate	W3/8	28	9	2.7	20	3.2	6.4	13	14	15 g	240 pcs	1,440 pcs
200-140-077	AD-555-39	Zinc Alloy (ZDC)	Zinc Chromate	W1/2	39	11	3	30	3.2	6.4	15.8	16.8	30 g	100 pcs	600 pcs