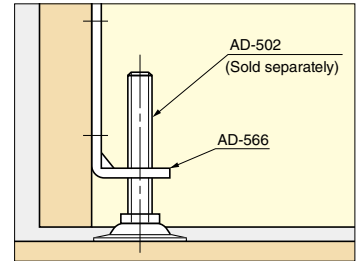
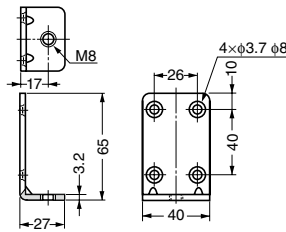


GLIDE BASE

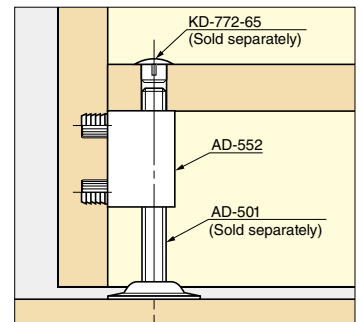
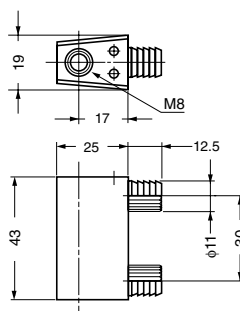
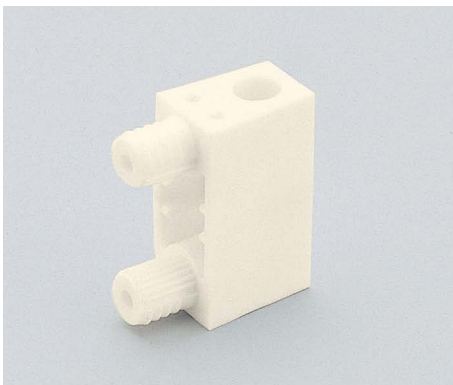
AD-566



| Item Code | Item Name | Material | Finish | Weight | Box | Carton |
|-------------|-----------|----------|----------------------|--------|---------|---------|
| 200-140-082 | AD-566 | Steel | Yellow Zinc Chromate | 82 g | 100 pcs | 200 pcs |

GLIDE BASE

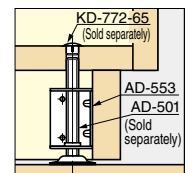
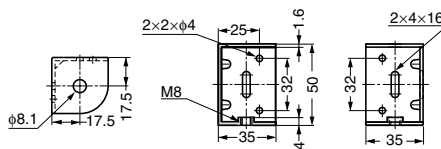
AD-552



| Item Code | Item Name | Material | Colour | Weight | Box | Carton |
|-------------|-----------|----------------|--------|--------|--------|---------|
| 200-140-083 | AD-552 | Polyamide (PA) | White | 20 g | 50 pcs | 500 pcs |

GLIDE BASE

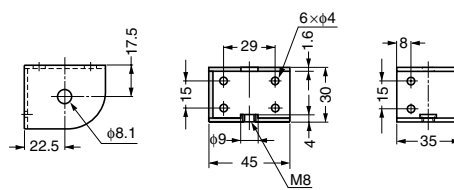
AD-553



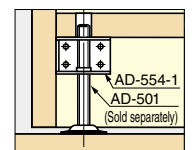
| Item Code | Item Name | Material | Finish | Weight | Box | Carton |
|-------------|-----------|----------|----------------------|--------|--------|---------|
| 200-140-084 | AD-553 | Steel | Yellow Zinc Chromate | 63 g | 40 pcs | 240 pcs |

GLIDE BASE

AD-554



Remarks
Following diagram is for AD-554-1 (AD-554-2:Left and right positions are revised.)



| Item Code | Item Name | Material | Finish | Weight | Box | Carton |
|-------------|-----------|----------|----------------------|--------|--------|---------|
| 200-140-085 | AD-554-1 | Steel | Yellow Zinc Chromate | 60 g | 50 pcs | 500 pcs |
| 200-140-087 | AD-554-2 | Steel | Yellow Zinc Chromate | 60 g | 50 pcs | 500 pcs |