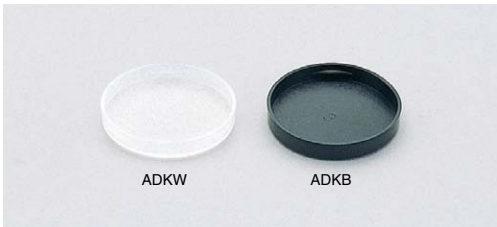
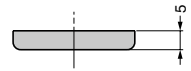
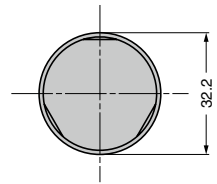


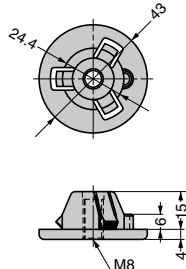
COVER FOR AD-501, AD-502 **ADKW, ADKB**

- Installed on the base of levelling glides AD-501 **1**, AD-502 **2** and AD-502-P2 **3** to prevent from scratching the floor.



RoHS	CAD	Item Code	Item Name	Material	Colour	Weight (g)	Box (pcs)	Carton (pcs)
		200-140-088	ADKW	PE	Natural (Semi-transparent)	1	250	2500
		200-140-089	ADKB		Black		250	2500

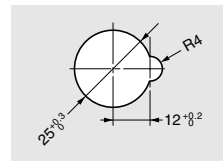
Refer to **1** : P.820, **2** **3** : P.819

SNAP-IN GLIDE BASE **AD-438** For M8

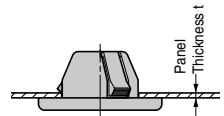
- For sheet metal.
- Easy installation simply by pushing into the mounting hole.

**LOAD CAPACITY 490 N**

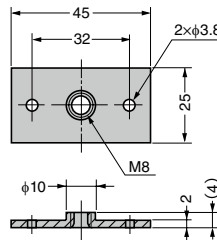
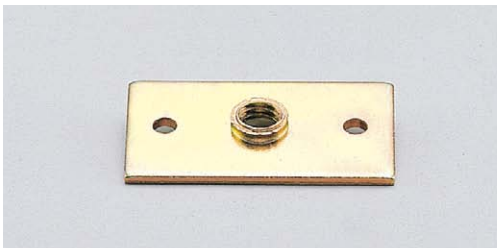
[Cut Out Dimensions]



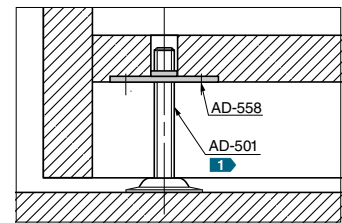
[Installation]



RoHS	CAD	Item Code	Item Name	Material	Colour	Panel Thickness t	Load Capacity N/pc	Load Capacity kgf/pc	Weight (g)	Box (pcs)	Carton (pcs)
		200-014-819	AD-438	POM	Grey	0.8-1.6	490	50	11	1000	-

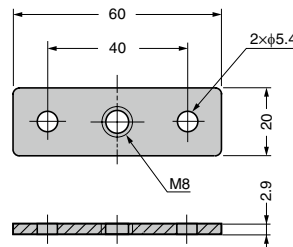
GLIDE BASE **AD-558** For M8

[Installation]

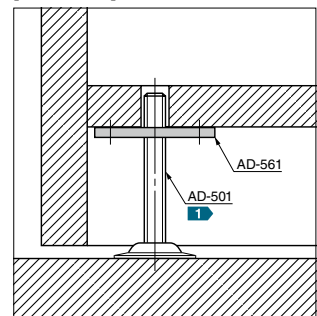


RoHS	CAD	Item Code	Item Name	Material	Finish	Weight (g)	Box (pcs)	Carton (pcs)
-		200-140-080	AD-558	Steel (SPCC)	Coloured Zinc Chromate	16	250	1000

Refer to **1** : P.820

GLIDE BASE **AD-561** For M8

[Installation]



RoHS	CAD	Item Code	Item Name	Material	Finish	Weight (g)	Box (pcs)	Carton (pcs)
		200-140-068	AD-561	Steel (SPCC)	Coloured Zinc Chromate (Trivalent)	30	100	1000

Refer to **1** : P.820