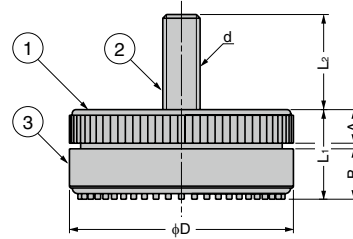


LEVELLING GLIDE A800

LOAD
CAPACITY 588 N

- Body and base can be rotated separately, making it possible to adjust after installation.
- Levelling glide with plastic base to prevent from scratching the floor.



No.	Part Name	Material	Finish/Colour
①	Body	PA	Black
②	Threaded Bolt	Steel (SWCH)	Coloured Zinc Chromate (Trivalent)
③	Base	PUR	Black

RoHS	CAD	Item Code	Item Name	L ₁	L ₂	D	d	Load Capacity N/pc	Load Capacity kgf/pc	Weight (g)	Box (pcs)	Carton (pcs)
✔	3D	200-140-532	A800-40L	23	24	40	M8	588	60	35	200	–
✔	3D	200-140-530	A800-40HL	54	32					71	120	–
✔	3D	200-140-533	A800-50L	24	25.5	50	M10			58	160	–
✔	3D	200-140-534	A800-50HL	54	34					113	60	–
✔	3D	200-140-531	A800-60L	24	26	60	69			100	–	

GLIDE BASE ADZS, ADZ

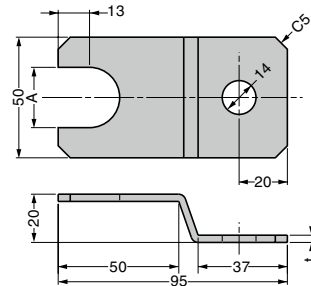
SUS



- 2 types of materials: Steel and stainless steel (SUS304) with excellent rust resistance.
- Easy installation by inserting on the hexagon nut (of the Levelling glide) and fixing to floor with an anchor bolt.
- For M12, M16, M20 levelling glide.

[Applications Example]

- Machine tools, conveyor belts, any equipment with vibration, etc.



RoHS	CAD	Item Code	Item Name	A	t	Material	Finish	Weight (g)	Box (pcs)	Carton (pcs)
✔	3D	200-141-243	ADZS-M12	19	3	Stainless Steel (SUS304)	Barrel Polished	104	50	100
✔	3D	200-141-244	ADZS-M16	24.5				100	50	100
✔	3D	200-141-245	ADZS-M20	30.5				96	50	100
–	3D	200-141-240	ADZ-M12	19	3.2	Steel (SPHC)	Clear Zinc Chromate	115	50	100
–	3D	200-141-241	ADZ-M16	24.5				110	50	100
–	3D	200-141-242	ADZ-M20	30.5				106	50	100