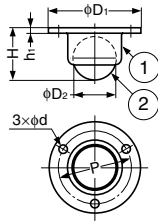


## BALL CASTER (SURFACE MOUNT TYPE)

BM

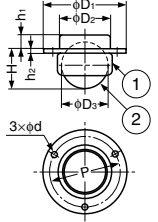


No.	Part Name	Material	Finish
①	Body	Steel	Brass
②	Ball	Steel	Polished

Item Code	Item Name	D <sub>1</sub>	D <sub>2</sub>	H	P	h <sub>1</sub>	d	Load Capacity	Weight	Box	Carton	
200-013-982	BM-12	28.9	11.9	15.2	21.8	1.7	2.5	98 N	10 kgf	9 g	100 pcs	800 pcs
200-013-983	BM-15	33.7	14.3	19.3	26.6	2.1	2.8	118 N	12 kgf	31.5 g	8 pcs	400 pcs
200-133-020	BM-20	37	17.5	23	29.5	3	2.7	147 N	15 kgf	52 g	8 pcs	400 pcs
200-133-021	BM-25	44	22.2	27	36	3.2	2.8	245 N	25 kgf	93 g	4 pcs	200 pcs
200-133-022	BM-32	57	25.4	32	47	3.2	4.7	392 N	40 kgf	150 g	4 pcs	200 pcs

## BALL CASTER (RECESSED MOUNT TYPE)

BH

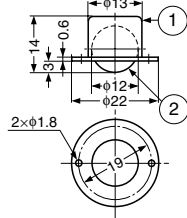


No.	Part Name	Material	Finish
①	Body	Steel	Brass
②	Ball	Steel	Polished

Item Code	Item Name	D <sub>1</sub>	D <sub>2</sub>	D <sub>3</sub>	H	P	h <sub>1</sub>	h <sub>2</sub>	d	Load Capacity	Weight	Box	Carton	
200-133-030	BH-20	30	18.3	17.5	16	5	24	1.6	2	98 N	10 kgf	35 g	8 pcs	400 pcs
200-133-031	BH-25	41	24.7	22.2	19.5	6	36	2.3	2.6	147 N	15 kgf	73 g	4 pcs	200 pcs
200-133-032	BH-32	48	29.3	25.4	24.5	6	41	2.3	2.6	196 N	20 kgf	113 g	4 pcs	200 pcs

## MINI BALL CASTER (RECESSED MOUNT TYPE)

BHB-12



No.	Part Name	Material	Finish
①	Body	Steel	Clear Zinc Chromate
②	Ball	Steel	Polished

Item Code	Item Name	Load Capacity	Weight	Box	Carton	
200-133-040	BHB-12	78.4 N	8 kgf	11 g	100 pcs	2,000 pcs

## PLASTIC CASTER

### High Corrosion Resistance

- Light and tough.
- Excellent resistance against water, chemicals and rust.
- No need of oil maintenance.

### Ball Type Caster

- Allows for better control and efficient use of space unlike ordinary casters.

### Easy Installation

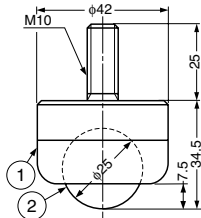
- Both surface mount type and mortise mount type are available.

### Unique and Various Application

- Can be used as conveyor belt when installed the ball up.

## PLASTIC CASTER (THREADED BOLT TYPE)

NT



No.	Part Name	Material	Colour
①	Body	Polyamide (PA)	Brown
②	Ball	Melamine Resin (MF)	Ivory

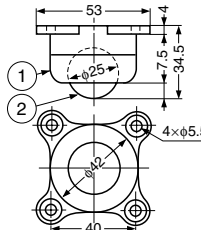
### Features

Inbuilt ball is made of steel.

Item Code	Item Name	Load Capacity	Weight	Box	Carton	
200-133-010	NT-25	245 N	25 kgf	58 g	20 pcs	200 pcs

## PLASTIC CASTER (SURFACE MOUNT TYPE)

NS



No.	Part Name	Material	Colour
①	Body	Polyamide (PA)	Brown
②	Ball	Melamine Resin (MF)	Ivory

### Features

Inbuilt ball is made of steel.

Item Code	Item Name	Load Capacity	Weight	Box	Carton	
200-130-422	NS-25	245 N	25 kgf	43 g	20 pcs	200 pcs