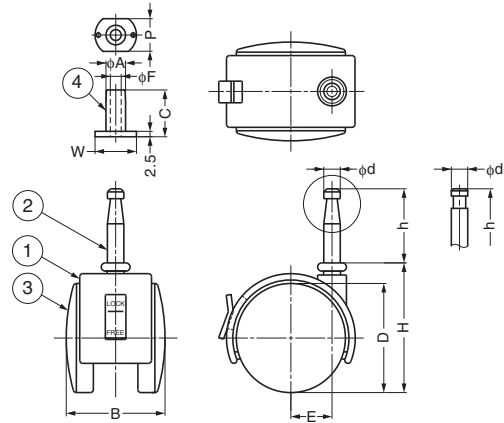


TWIN WHEEL CASTER (INSERT BOLT TYPE)

BR-20S, BR-25S



Parts Included
Socket

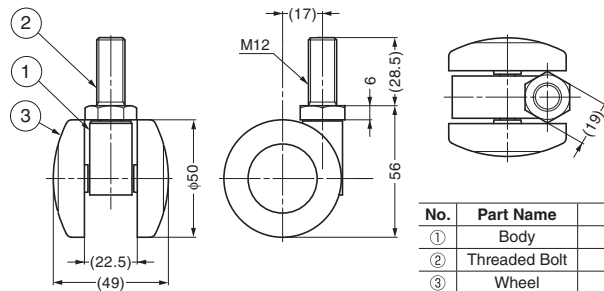


No.	Part Name	Material	Finish/Colour
①	Body	Polyamide (PA)	Black
②	Insert Bolt	Steel	Clear Zinc Chromate
③	Wheel	Polyamide (PA)	Black
④	Socket	Polyethylene (PE)	-

Item Code	Item Name	Type	D	H	h	B	E	d	A	W	C	F	P	Load Capacity N	Load Capacity kgf	Weight	Carton
200-935-963	BR-20SS	With Brake	45	53	36	42	16	8	11.5	22	30	7	17	294 N	30 kgf	85 g	200 pcs
200-132-025	BR-20S	Without Brake	45	53	36	42	16	8	11.5	22	30	7	17	294 N	30 kgf	75 g	200 pcs
200-936-244	BR-25SS	With Brake	53	63	36	48	20	8	11.5	22	30	7	17	392 N	40 kgf	124 g	140 pcs
200-132-035	BR-25S	Without Brake	53	63	36	48	20	8	11.5	22	30	7	17	392 N	40 kgf	113 g	140 pcs

TWIN WHEEL CASTER (THREADED BOLT TYPE)

PT-50N12

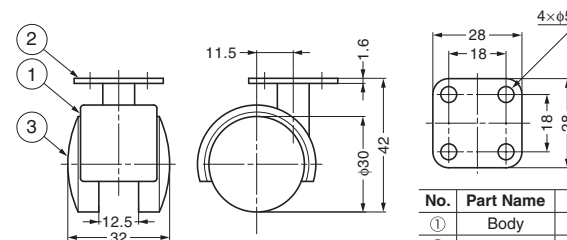


No.	Part Name	Material	Finish/Colour
①	Body	Polyamide (PA)	Black
②	Threaded Bolt	Steel	Nickel
③	Wheel	Polyamide (PA)	Black

Item Code	Item Name	Load Capacity N	Load Capacity kgf	Weight	Carton
200-013-011	PT-50N12	500 N	51 kgf	104 g	100 pcs

TWIN WHEEL CASTER (PLATE TYPE)

PT-30P



No.	Part Name	Material	Finish/Colour
①	Body	Polyamide (PA)	Black
②	Plate	Steel	Nickel
③	Wheel	Polyamide (PA)	Black

Item Code	Item Name	Load Capacity N	Load Capacity kgf	Weight	Carton
200-013-009	PT-30P	200 N	20.4 kgf	34 g	400 pcs