

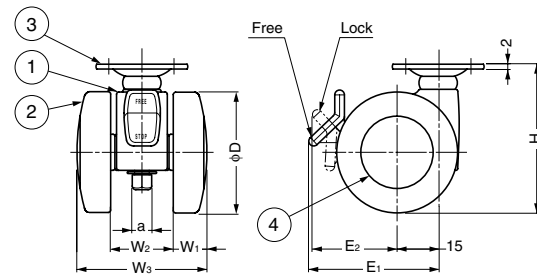
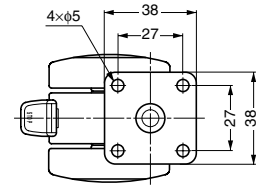
TWIN WHEEL CASTER (PLATE TYPE)

NB-P, NS-P



w/o Brake

w/ Brake



No.	Part Name	Material	Finish/Colour
①	Body	Polyamide (PA)	Black
②	Wheel	Polyamide (PA)	Black
③	Plate	Steel	Clear Zinc Chromate
④	Wheel Cap	Stainless Steel (SUS430)	Plain

Item Code	Item Name	Type	D	H	E ₁	E ₂	W ₁	W ₂	W ₃	a	Load Capacity N	Load Capacity kgf	Weight	Carton
200-133-148	NB-40P	With Brake	40	49	48	32	12	21	45	7	392 N	40 kgf	89 g	200 pcs
200-132-500	NS-40P	Without Brake	40	49	-	-	12	21	45	7	392 N	40 kgf	88 g	200 pcs
200-132-515	NB-50P	With Brake	50	61	52	36	14	25	53	8	588 N	60 kgf	132 g	120 pcs
200-132-514	NS-50P	Without Brake	50	61	-	-	14	25	53	8	588 N	60 kgf	128 g	120 pcs

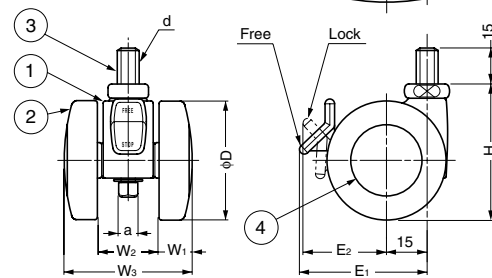
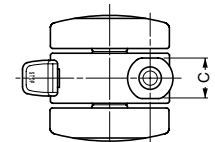
TWIN WHEEL CASTER (THREADED BOLT TYPE)

NB, NS



w/o Brake

w/ Brake



No.	Part Name	Material	Finish/Colour
①	Body	Polyamide (PA)	Black
②	Wheel	Polyamide (PA)	Black
③	Threaded Bolt	Steel	Metric Screw Thread: Clear Zinc Chromate Inch Screw Thread: Yellow Zinc Chromate
④	Wheel Cap	Stainless Steel (SUS430)	Plain

Item Code	Item Name	Type	D	H	E ₁	E ₂	W ₁	W ₂	W ₃	C	d	a	Load Capacity N	Load Capacity kgf	Weight	Carton
200-132-517	NB-40- 3	With Brake	40	45	48	32	12	21	45	14	W3/8	7	392 N	40 kgf	76 g	200 pcs
200-132-511	NS-40- 3	Without Brake	40	45	-	-	12	21	45	14	W3/8	7	392 N	40 kgf	73 g	200 pcs
200-943-844	NB-40- 8	With Brake	40	45	48	32	12	21	45	14	M8	7	392 N	40 kgf	73 g	200 pcs
200-943-843	NS-40- 8	Without Brake	40	45	-	-	12	21	45	14	M8	7	392 N	40 kgf	70 g	200 pcs
200-132-516	NB-40-10	With Brake	40	45	48	32	12	21	45	14	M10	7	392 N	40 kgf	76 g	200 pcs
200-132-503	NS-40-10	Without Brake	40	45	-	-	12	21	45	14	M10	7	392 N	40 kgf	76 g	200 pcs
200-132-513	NB-50- 3	With Brake	50	58	52	36	14	25	53	17	W3/8	8	588 N	60 kgf	128 g	120 pcs
200-132-512	NS-50- 3	Without Brake	50	58	-	-	14	25	53	17	W3/8	8	588 N	60 kgf	117 g	120 pcs
200-943-850	NB-50- 8	With Brake	50	58	52	36	14	25	53	17	M8	8	588 N	60 kgf	121 g	120 pcs
200-943-849	NS-50- 8	Without Brake	50	58	-	-	14	25	53	17	M8	8	588 N	60 kgf	115 g	120 pcs
200-943-852	NB-50-10	With Brake	50	58	52	36	14	25	53	17	M10	8	588 N	60 kgf	129 g	120 pcs
200-943-851	NS-50-10	Without Brake	50	58	-	-	14	25	53	17	M10	8	588 N	60 kgf	119 g	120 pcs