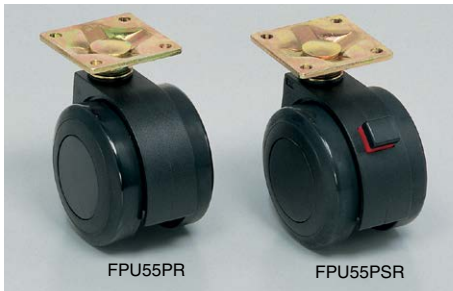


## TWIN WHEEL CASTER (PLATE TYPE)



FPU55PR

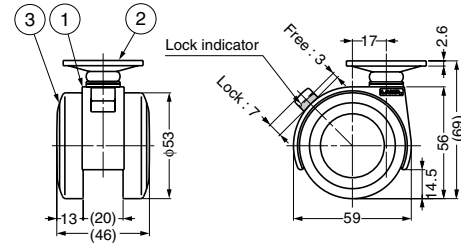
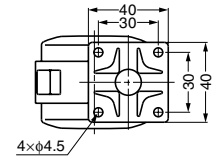
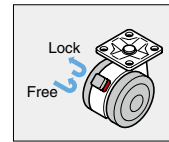
FPU55PSR



Caster bracket  
FA55-FIX to lock  
swivel available  
(P.740).

### Features

- Wheels are coated in an elastomer which absorbs vibration and gives an extra smooth and quiet ride.
- Caster with high quality polyamide body. Excellent durability, chemical / weather / wear resistance.



Item Code	Item Name	Type	Load Capacity N	Load Capacity kgf	Weight	Box	Carton
200-133-288	FPU55PSR	With Brake	490 N	50 kgf	151 g	4 pcs	72 pcs
200-133-293	FPU55PR	Without Brake	490 N	50 kgf	146 g	4 pcs	72 pcs

No.	Part Name	Material	Finish/Colour
①	Body	Polyamide (PA)	Black
②	Plate	Steel	Yellow Zinc Chromate
③	Wheel	Polyamide (PA) + Elastomer (TPE)	Black

## TWIN WHEEL CASTER (THREADED BOLT TYPE)

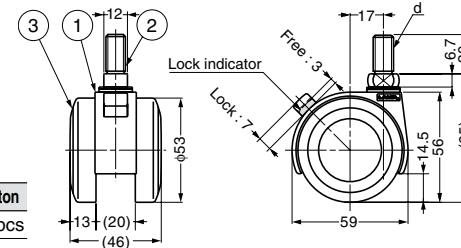
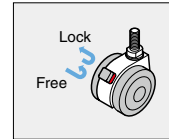


FPU55N3R

FPU55N3SR

### Features

- Wheels are coated in an elastomer which absorbs vibration and gives an extra smooth and quiet ride.
- Caster with high quality polyamide body. Excellent durability, chemical / weather / wear resistance.



Item Code	Item Name	Type	d	Load Capacity N	Load Capacity kgf	Weight	Box	Carton
200-133-289	FPU55N 3SR	With Brake	W3/8	490 N	50 kgf	128 g	4 pcs	72 pcs
200-133-294	FPU55N 3R	Without Brake	W3/8	490 N	50 kgf	123 g	4 pcs	72 pcs
200-133-290	FPU55N10SR	With Brake	M10	490 N	50 kgf	128 g	4 pcs	72 pcs
200-133-295	FPU55N10R	Without Brake	M10	490 N	50 kgf	123 g	4 pcs	72 pcs
200-133-291	FPU55N12SR	With Brake	M12	490 N	50 kgf	128 g	4 pcs	72 pcs
200-133-296	FPU55N12R	Without Brake	M12	490 N	50 kgf	123 g	4 pcs	72 pcs

No.	Part Name	Material	Finish/Colour
①	Body	Polyamide (PA)	Black
②	Threaded Bolt	Steel	Yellow Zinc Chromate
③	Wheel	Polyamide (PA) + Elastomer (TPE)	Black

## TWIN WHEEL CASTER (INSERT BOLT TYPE)



FPU55SR

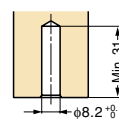
FPU55SSR

### Features

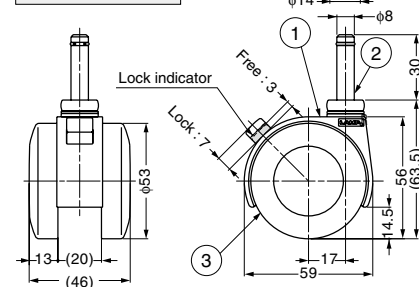
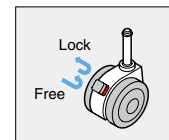
- Wheels are coated in an elastomer which absorbs vibration and gives an extra smooth and quiet ride.
- Caster with high quality polyamide body. Excellent durability, chemical / weather / wear resistance.

### Parts Included

Socket



Cut out dimensions  
(w/o using the socket)



Item Code	Item Name	Type	Load Capacity N	Load Capacity kgf	Weight	Box	Carton
200-130-911	FPU55SSR	With Brake	490 N	50 kgf	131 g	4 pcs	72 pcs
200-130-912	FPU55SR	Without Brake	490 N	50 kgf	126 g	4 pcs	72 pcs

No.	Part Name	Material	Finish/Colour
①	Body	Polyamide (PA)	Black
②	Insert Bolt	Steel	Yellow Zinc Chromate
③	Wheel	Polyamide (PA) + Elastomer (TPE)	Black
④	Socket	Steel	Yellow Zinc Chromate