

STAINLESS STEEL CASTER (PLATE TYPE)



SUS-SK

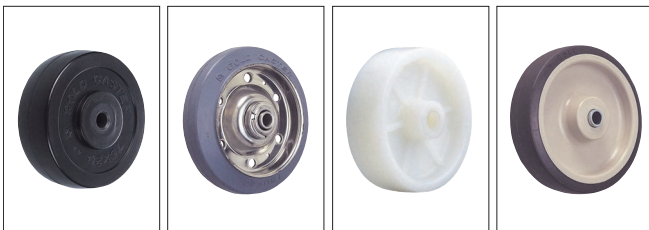


Features

- Non-swivel (Rigid) type.
- Made of corrosion resistant 304 stainless steel. Ideal for humid environments, laboratories, kitchens etc.

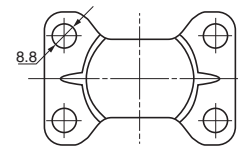
Remarks

Rubber wheel φ100, φ125, φ150 have metallic plate.

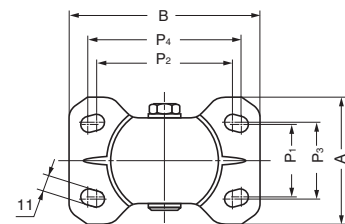


R: Rubber wheel R: Rubber wheel (w/ Bearing) N: Polyamide wheel UWB: Polyurethane wheel (w/ Bearing)

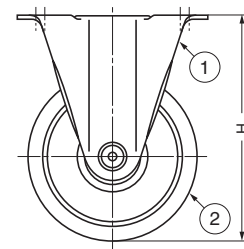
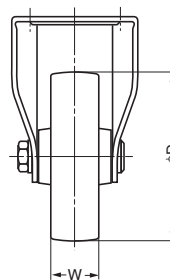
Mounting Hole



For φD 65-75 mm



For φD 100-125-150 mm



No.	Material	Finish/Colour
①	Stainless Steel (SUS304)	Satin
②	Polyamide (PA)	As below
	Urethane	As below

Item Code	Item Name	Wheel	Wheel Colour	D	W	H	A	B	P ₁	P ₂	P ₃	P ₄	Load Capacity	Load Capacity	Weight	Carton
200-134-255	SUS-SK65-N	Polyamide	White	65	25	85	47	70	28	55	-	-	686 N	70 kgf	160 g	50 pcs
200-134-257	SUS-SK65-UWB	Urethane (With Bearing)	Ivory/Dark Brown	65	25	85	47	70	28	55	-	-	686 N	70 kgf	180 g	50 pcs
200-134-259	SUS-SK75-R	Rubber	Black	75	25	93	47	70	28	55	-	-	588 N	60 kgf	260 g	50 pcs
200-134-261	SUS-SK75-N	Polyamide	White	75	25	93	47	70	28	55	-	-	784 N	80 kgf	200 g	50 pcs
200-134-263	SUS-SK75-UWB	Urethane (With Bearing)	Ivory/Dark Brown	75	25	93	47	70	28	55	-	-	784 N	80 kgf	220 g	50 pcs
200-134-265	SUS-SK100-R	Rubber	Grey	100	32	132	78	110	45	80	50	90	1176 N	120 kgf	780 g	15 pcs
200-134-269	SUS-SK100-N	Polyamide	White	100	32	132	78	110	45	80	50	90	1176 N	120 kgf	570 g	15 pcs
200-134-271	SUS-SK100-NWB	Polyamide (With Bearing)	White	100	32	132	78	110	45	80	50	90	1176 N	120 kgf	650 g	15 pcs
200-134-273	SUS-SK100-UWB	Urethane (With Bearing)	Ivory/Dark Brown	100	32	132	78	110	45	80	50	90	1176 N	120 kgf	690 g	15 pcs
200-134-279	SUS-SK125-NWB	Polyamide (With Bearing)	White	125	35	168	94	140	56	100	53	112	1470 N	150 kgf	1060 g	10 pcs
200-134-281	SUS-SK125-UWB	Urethane (With Bearing)	Ivory/Dark Brown	125	38	168	94	140	56	100	53	112	1470 N	150 kgf	1140 g	10 pcs
200-134-289	SUS-SK150-UWB	Urethane (With Bearing)	Ivory/Dark Brown	150	38	190	94	140	56	100	53	112	1568 N	160 kgf	1350 g	8 pcs