

LEVELING GLIDE

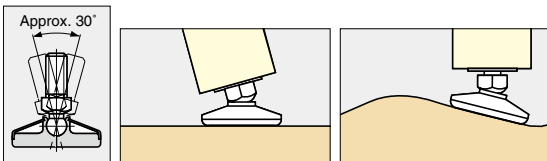
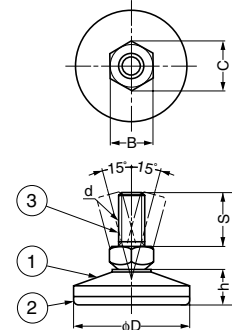
TEST METHOD 14

RP



Features

- Swivels approximately 30° to compensate for uneven floors.
- Polyamide base.
- Wide variations of available bolts: M6 - M14.
- Different length can be made as special order.



No.	Part Name	Material	Finish/Colour
①	Body	Stainless Steel (SUS304)	Satin
②	Base	Polyamide (PA)	Natural
③	Threaded Bolt	Steel	Yellow Zinc Chromate

Item Code	Item Name	d	D	H	h	S	B	C	Load Capacity N	Load Capacity kgf	Weight	Box	Carton
200-140-028	RP-25M6-G	M6	25	31	9.7	14	8	9.2	588 N	60 kgf	11 g	50 pcs	500 pcs
200-140-029	RP-30M8-G	M8	30	37.5	11.2	19	10	11.5	1078 N	110 kgf	21 g	35 pcs	350 pcs
200-140-023	RP-30N25	W5/16	30	37.5	11.2	19	10	11.5	1078 N	110 kgf	21 g	35 pcs	350 pcs
200-140-031	RP-40M10-G	M10	40	42.5	13.7	20	13	15	1568 N	160 kgf	38 g	25 pcs	250 pcs
200-140-032	RP-40M3-G	W3/8	40	42.5	13.7	20	13	15	1568 N	160 kgf	38 g	25 pcs	250 pcs
200-140-033	RP-50M12-G	M12	50	51	16	25	17	19.6	3136 N	320 kgf	70 g	15 pcs	150 pcs
200-140-027	RP-70M14-G	M14	70	66.5	24.7	30	19	22	6100 N	622 kgf	150 g	10 pcs	100 pcs

STAINLESS STEEL LEVELING GLIDE

TEST METHOD 14

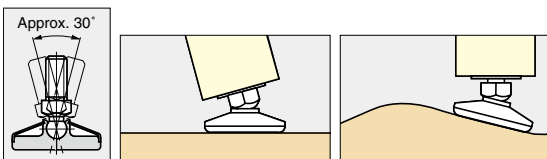
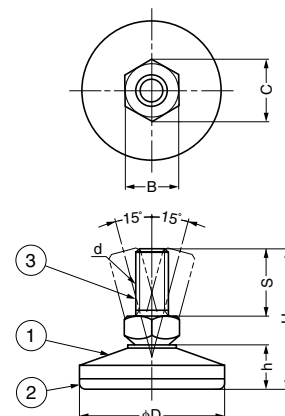
STAINLESS 304 STEEL

RPS



Features

- Compensates for uneven floors.
- Swivels approximately 30° to compensate for uneven floor.
- Different length can be made as special order.



No.	Part Name	Material	Finish/Colour
①	Body	Stainless Steel (SUS304)	Satin
②	Base	Polyamide (PA)	Natural
③	Threaded Bolt	Stainless Steel (SUS303)	Plain

Item Code	Item Name	d	D	H	h	S	B	C	Load Capacity N	Load Capacity kgf	Weight	Box	Carton
200-026-994	RPS-25M6-G	M6	25	31	9.7	14	8	9.2	588 N	60 kgf	11 g	50 pcs	500 pcs
200-026-995	RPS-30M8-G	M8	30	37.5	11.2	19	10	11.5	1078 N	110 kgf	21 g	35 pcs	350 pcs
200-026-996	RPS-40M10-G	M10	40	42.5	13.7	20	13	15	1568 N	160 kgf	38 g	25 pcs	250 pcs