

TOWEL BAR (PREMIUM WOOD SERIES)



PXB-WM06



Meticulously selected materials are hand processed to create this towel bar. The defined lines of the metal contrast with the warmth of natural wood to create a visually appealing linear design.

Features

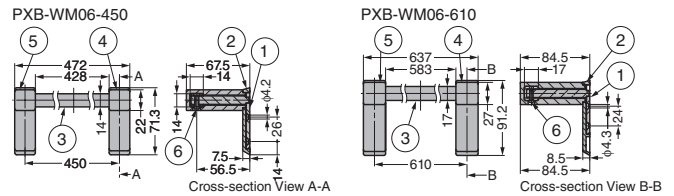
- The matte black finish is coated with a special chromate. This type combines the desirable glossiness of paint with the unique strength of plating.
- A wide array of matching products is available, allowing for total design coordination.

Remarks

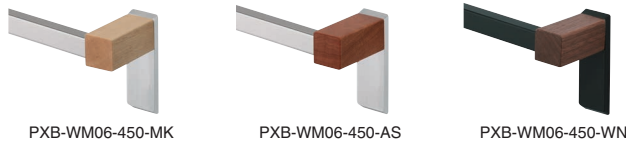
As this product is made from natural wood, the grain and colour differ from one item to another.

Parts Included

- Size 4 x 32 cross-recessed flat head tapping screws
- Nominal 2.5 hex bar spanner



Variations



No.	Part Name	Material	Finish/Colour
①	Base	Steel (SS)	Gloss Chromate Finish
②	Base Cover	Zinc Alloy (ZDC)	See table below
③	Bar	Aluminium Alloy	Anodised
④	Arm R	See table below	Clear Coating
④	Arm L		
⑥	Hex Socket Button Bolts	Stainless Steel	Plain

RoHS	CAD	Item Code	Item Name	Finish/Colour (Bar)	Finish/Colour (Base Cover)	Material (Arm)	Load Capacity N	Load Capacity kgf	Weight (g)	Box (pcs)	Carton (pcs)	
CE	2030	280-033-751	PXB-WM06-450-MK	Anodised/	Satin Finish/	Natural Wood (Monarch Birch)	100	10.2	370	1	8	
CE	2030	280-033-752	PXB-WM06-450-AS	Stainless Steel Look	Stainless Steel Colour	Natural Wood (Japanese Hop-hornbeam)				1	8	
CE	2030	280-033-753	PXB-WM06-450-WN	Anodised/Matte Black	Chromate Finish/Matte Black	Natural Wood (Walnut)				1	8	
CE	2030	280-037-134	★PXB-WM06-610-MK	Anodised/	Satin Finish/	Natural Wood (Monarch Birch)			614	10.2	1	8
CE	2030	280-037-135	★PXB-WM06-610-AS	Stainless Steel Look	Stainless Steel Colour	Natural Wood (Japanese Hop-hornbeam)					1	8
CE	2030	280-037-136	★PXB-WM06-610-WN	Anodised/Matte Black	Chromate Finish/Matte Black	Natural Wood (Walnut)					1	8

★Discontinued

TOWEL BAR (URBAN METAL SERIES)



PXB-UM06-450



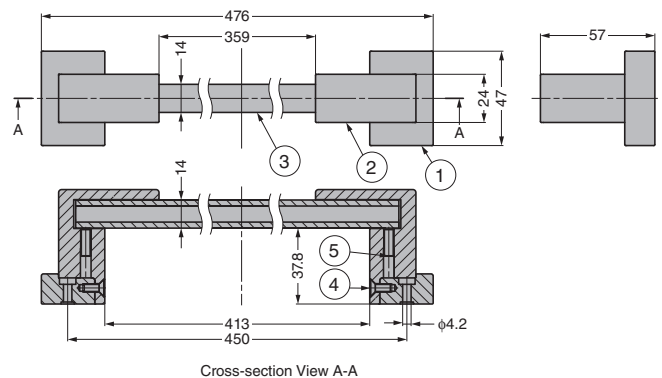
A deceptively simple looking towel bar emphasizing modern urban sensibilities. The edges have been gently rounded and the surface has been carefully and delicately processed.

Features

A wide array of matching products is available, allowing for total design coordination.

Parts Included

- Size 4 x 32 cross-recessed pan head tapping screws
- Nominal 2.5 hex bar spanner



No.	Part Name	Material	Finish/Colour
①	Base	Aluminium Alloy	See table below
②	Arm		
③	Bar		
④	Hex Socket Flat Head Screws	Stainless Steel	Plain, Baked Enamel Finish/Black
⑤	Hexagon Socket Set Screws		Plain

CAD	Item Code	Item Name	Material	Finish/Colour	Load Capacity N	Load Capacity kgf	Weight (g)	Box (pcs)	Carton (pcs)
2030	280-033-747	PXB-UM06-450-ST	Aluminium Alloy	Anodised/Stainless Steel Look	100	10.2	400	1	8
2030	280-033-748	PXB-UM06-450-BL		Anodised/Matte Black				1	8

