

REVISION HISTORY			
REV	DATE	BY	DESCRIPTION
D	21JUL2020	MJS/TMS	PRN: P2020-1338

PART NUMBER: E5-6A-H F-UU D

D DOOR THICKNESS AND GRIP

H = HEAD STYLE (SEE BELOW)

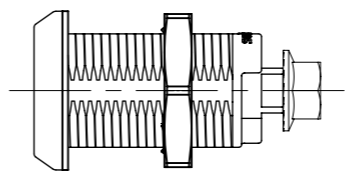
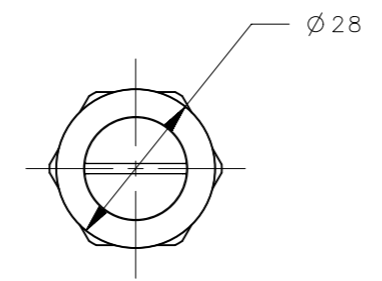
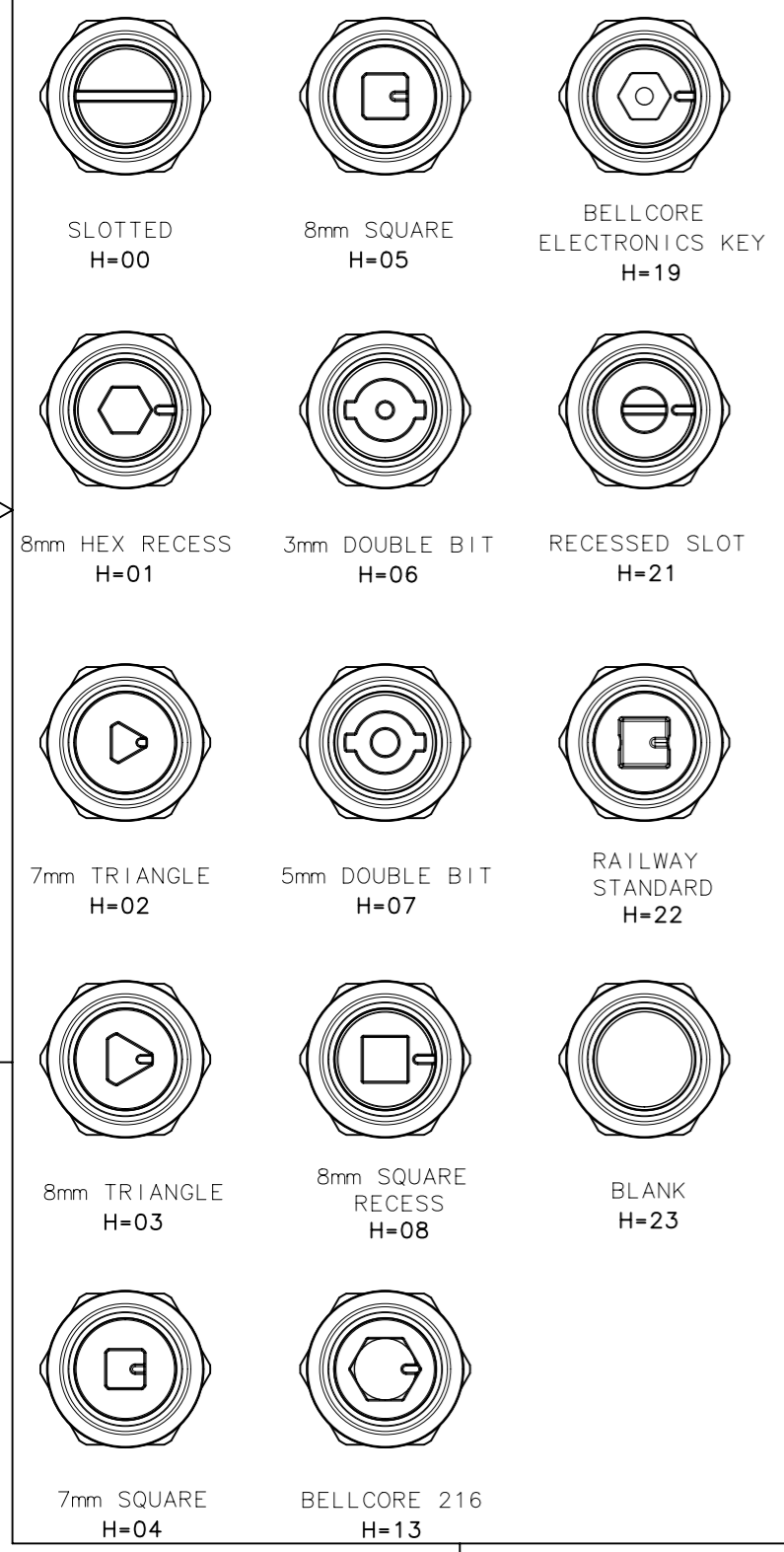
F = MATERIAL AND FINISH

2 = DIECAST ZINC, BRIGHT CHROME PLATE

5 = DIE CAST ZINC, BLACK POWDER COAT

D	(T) DOOR THICKNESS	(G) GRIP RANGE
1	1 - 18	5 - 53
2	1 - 18	54 - 82
3	18 - 33	18 - 66
4	18 - 33	68 - 82
5	33 - 51	34 - 82

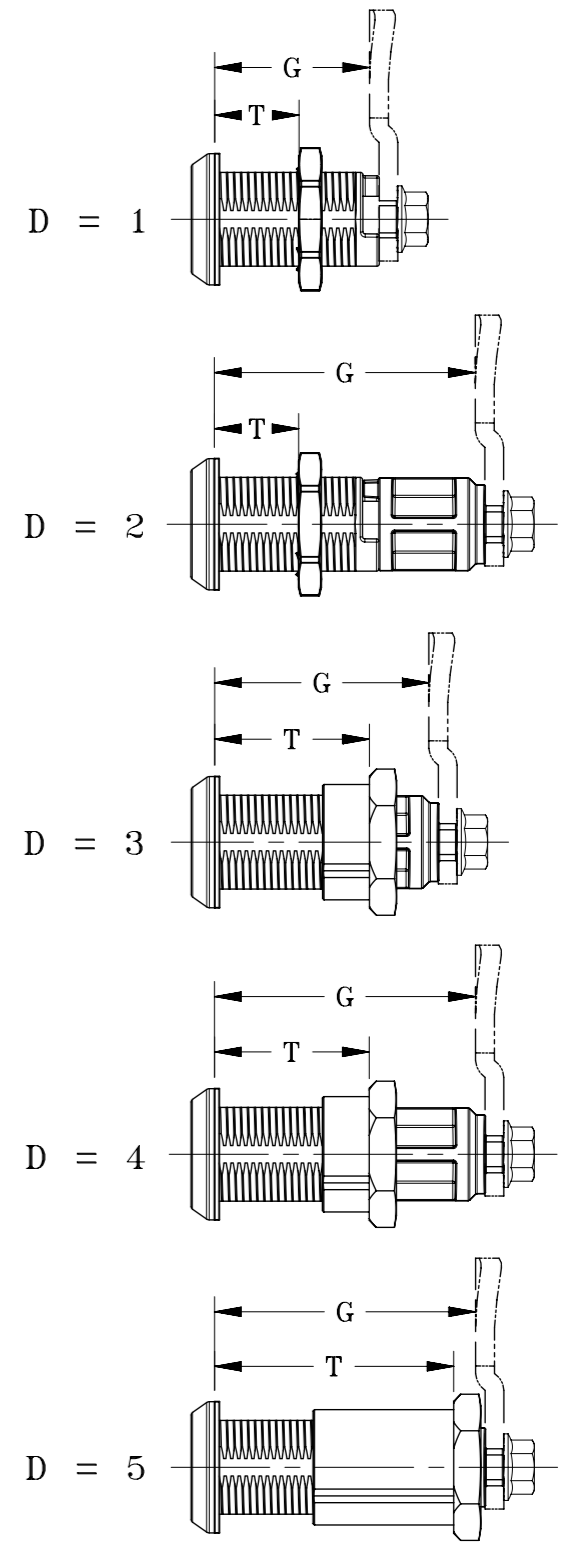
H HEAD STYLES



NOTES:

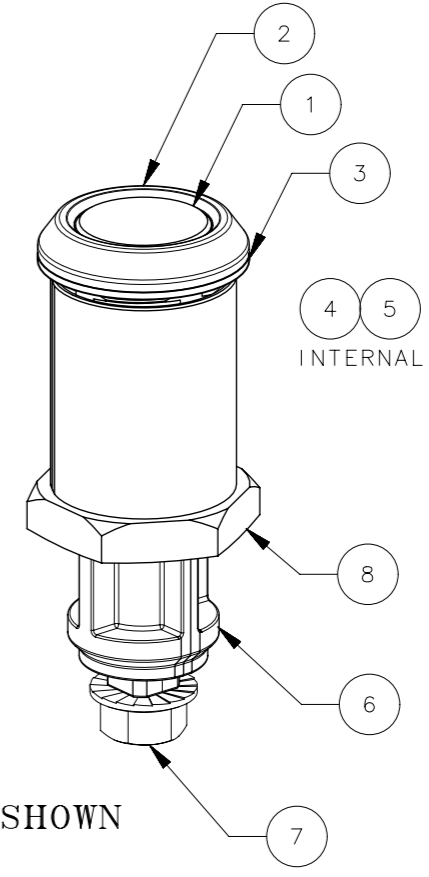
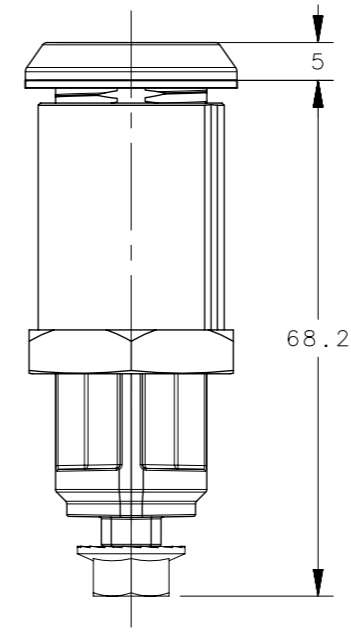
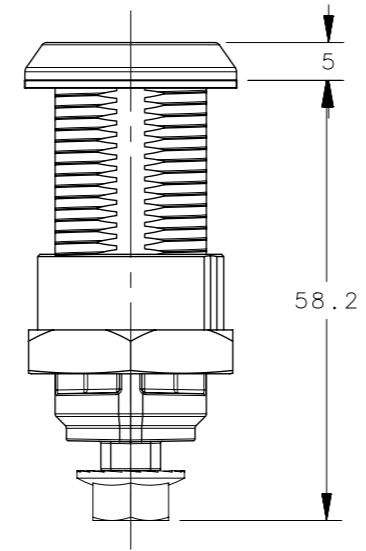
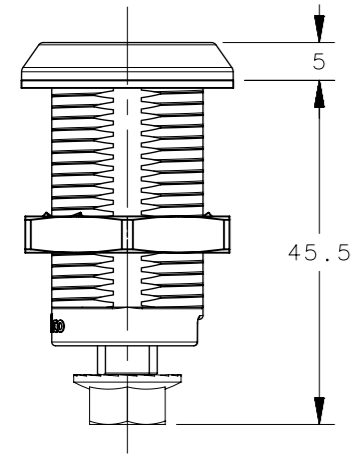
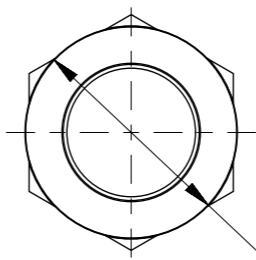
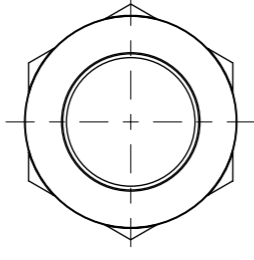
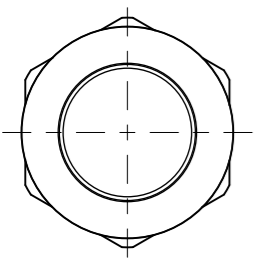
- COSMETIC SPECIFICATION:
ALL POWDERCOATED SURFACES ARE TO CONFORM TO A CLASS "B" DESIGNATION, ALL OTHER SURFACES ARE TO CONFORM TO A CLASS "D" DESIGNATION AS DESCRIBED IN SOUTHCO COSMETIC SPECIFICATION:
S-121-02 FOR ZINC PLATING AND SEALED PARTS
S-121-03 FOR POWDER COATING
- LATCH ASSEMBLY CAN BE USED WITH OTHER E5 FAMILY ACCESSORIES. PLEASE REFER TO SOUTHCO HANDBOOK OR WEBSITE AT www.Southco.com FOR ENTIRE LIST.
- PACKAGING: LATCHES ARE LAYER PACKAGED IN TRAYS. CAM SCREWS AND MOUNTING NUTS ARE BULK PACKAGED SEPARATELY.
- RoHS COMPLIANT.

NOTE:
THE BLANK DRIVER STYLE IS RECOMMENDED FOR USE IN MULTI-POINT APPLICATIONS WITH A SEPARATE ACTUATOR.



CPB NUMBER 2017-1147	THIRD ANGLE PROJECTION			
	MILLIMETERS [IN]			
	TOLERANCES UNLESS OTHERWISE NOTED	DESCRIPTION E5 CAM LATCH ASSEMBLY HVAC, SINGLE POINT		
	ALL DIMENSIONS WITHOUT TOLERANCES ARE FOR REFERENCE ONLY.	SIZE A3	SYSTEM NX	DWG NO. J-E5-6A
PROPRIETARY ITEM <small>EXCEPT FOR USES EXPRESSLY GRANTED IN WRITING, INFORMATION DISCLOSED HEREON IS CONFIDENTIAL AND ALL RIGHTS, PATENT AND OTHERWISE, ARE RESERVED BY SOUTHCO, INC.</small>	PER ASME Y14.5M-1994	DRAWN BY MJS	DATE 01JUL2019	SCALE 1:1
				SHEET 1 OF 8

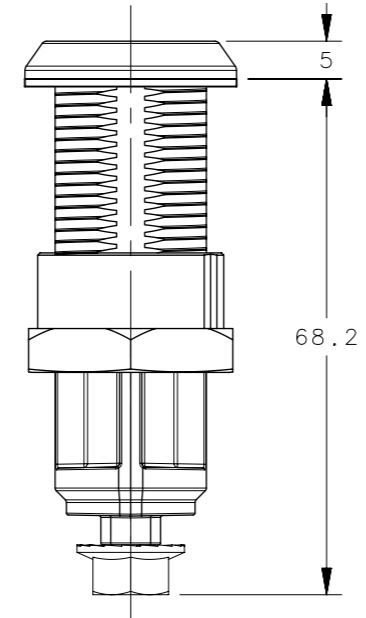
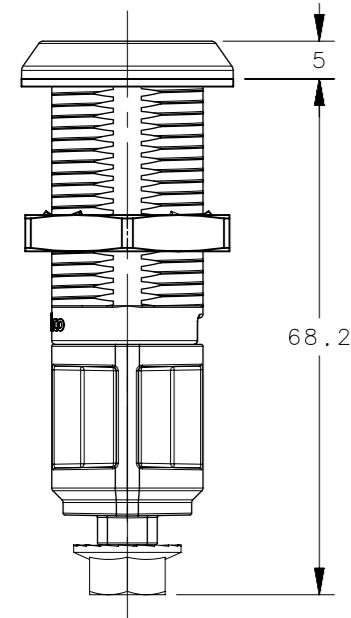
REVISION HISTORY			
REV	DATE	BY	DESCRIPTION
D	21JUL2020	MJS/TMS	PRN: P2020-1338



E5-6A-23F-UU1 SHOWN

E5-6A-23F-UU3 SHOWN

E5-6A-23F-UU5 SHOWN



E5-6A-23F-UU2 SHOWN

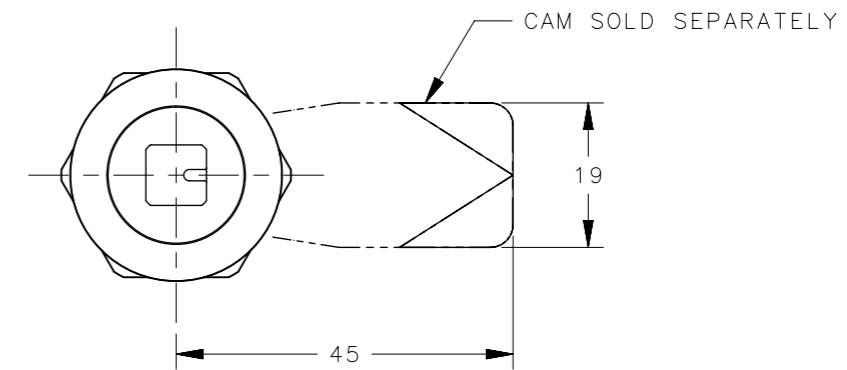
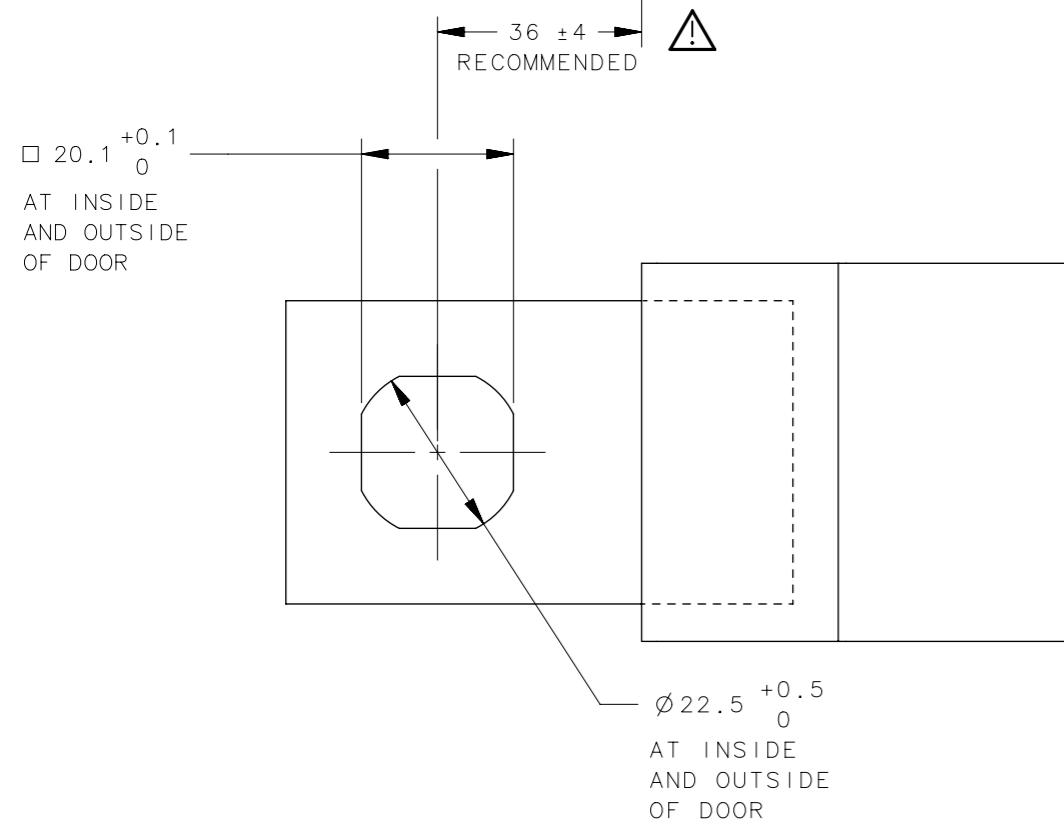
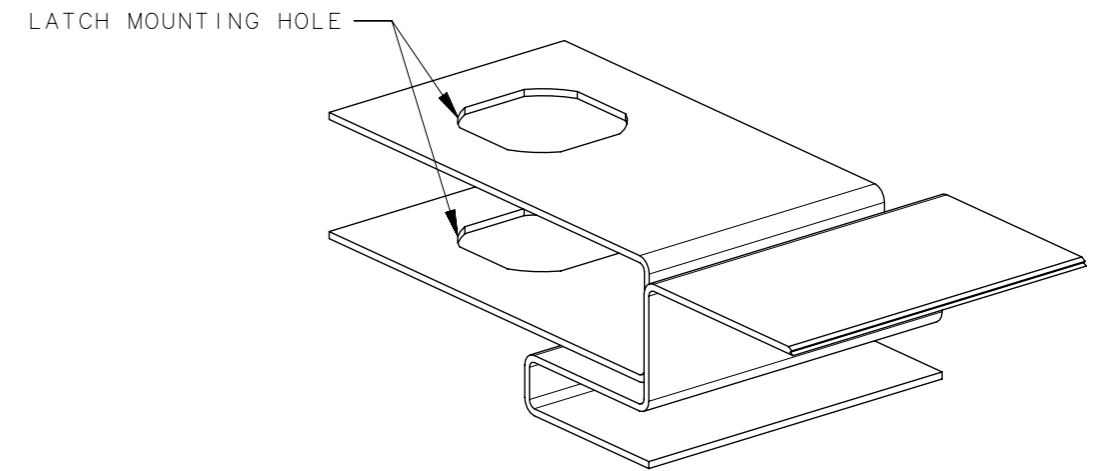
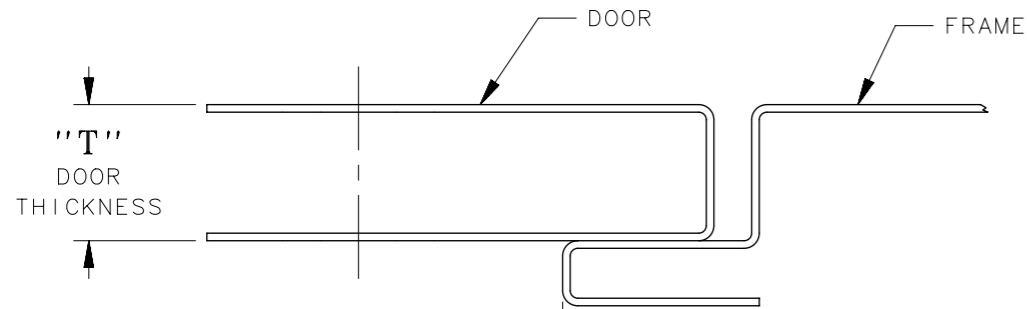
E5-6A-23F-UU4 SHOWN

NO.	PART NUMBER	QTY	TYPE OF COMPONENT	MATERIAL	GENERAL NOTES
8	-	1	NUT	ZINC	CHROMATE SEALER
7	-	1	CAM SCREW	STEEL	ZINC NICKEL PLATE
6	-	1	SHAFT	ZINC	CHROMATE SEALER
5	-	1	SPRING	MUSIC WIRE	ZINC PLATE
4	-	1	O-RING	NITRILE	BLACK
3	-	1	SEALING WASHER	LDPE	BLACK
2	-	1	HOUSING	ZINC	CHROMATE SEALER, BLACK POWDERCOATING
1	-	1	DRIVER	ZINC	CHROMATE SEALER, BLACK POWDERCOATING
-	E5-6A-WWF-UUD	-	CAM LATCH ASSEMBLY	-	-

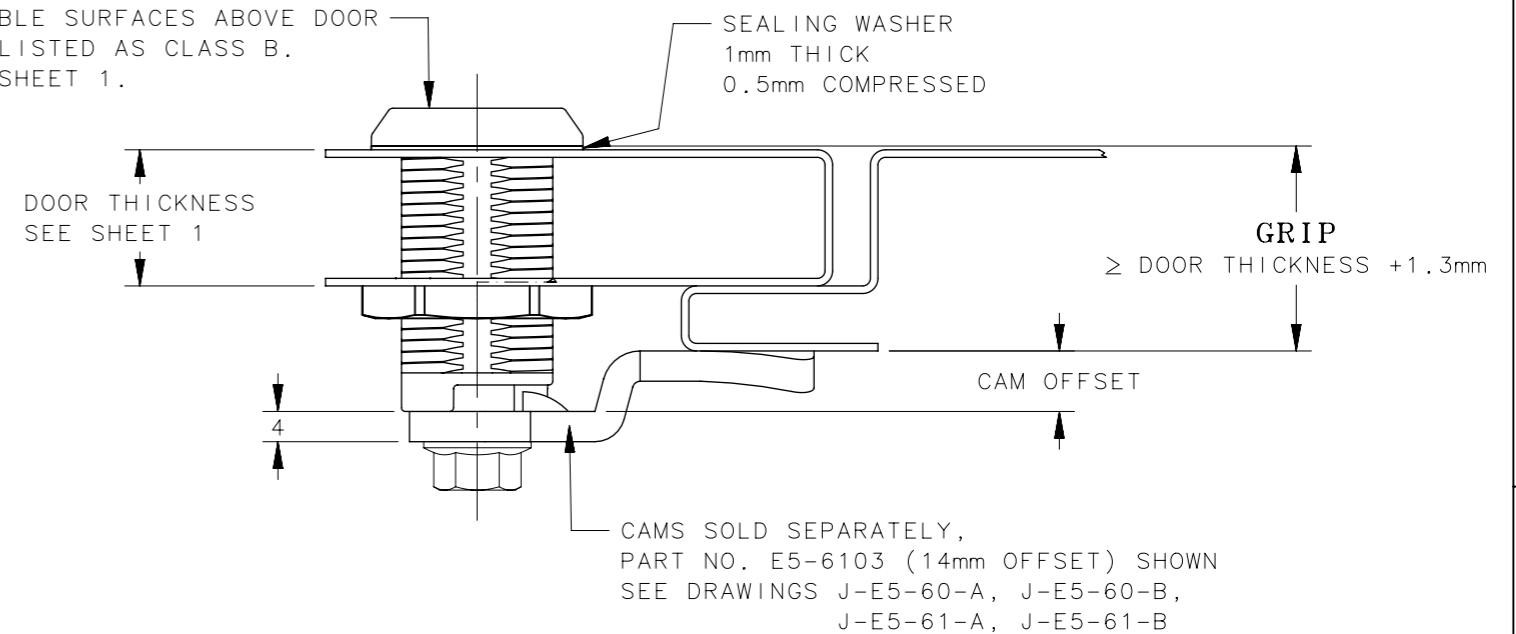
CPB NUMBER 2017-1147	THIRD ANGLE PROJECTION	
	MILLIMETERS [IN]	
	TOLERANCES UNLESS OTHERWISE NOTED	DESCRIPTION E5 CAM LATCH ASSEMBLY HVAC, SINGLE POINT
	ALL DIMENSIONS WITHOUT TOLERANCES ARE FOR REFERENCE ONLY.	SIZE A3 SYSTEM NX DWG NO. J-E5-6A
PROPRIETARY ITEM EXCEPT FOR USES EXPRESSLY GRANTED IN WRITING, INFORMATION DISCLOSED HEREON IS CONFIDENTIAL AND ALL RIGHTS, PATENT AND OTHERWISE, ARE RESERVED BY SOUTHCO, INC.	PER ASME Y14.5M-1994	DRAWN BY MJS DATE 01JUL2019 SCALE 1:1 SHEET 2 OF 8

DOOR PREPARATION
1mm - 18mm DOOR THICKNESS

REVISION HISTORY			
REV	DATE	BY	DESCRIPTION
D	21JUL2020	MJS/TMS	PRN: P2020-1338



VISIBLE SURFACES ABOVE DOOR ARE LISTED AS CLASS B. SEE SHEET 1.



DOOR PREPARATION
1mm - 18mm DOOR THICKNESS

D	(T) DOOR THICKNESS
1	1 - 18
2	1 - 18
3	18 - 33
4	18 - 33
5	33 - 51

IMPORTANT INSTALLATION INFORMATION
ADHERANCE TO THE RECOMMENDED DIMENSION IS CRITICAL TO THE PROPER FUNCTIONING OF THE E5 CAM LATCH.

CPB NUMBER 2017-1147
THIRD ANGLE PROJECTION
MILLIMETERS [IN]
TOLERANCES UNLESS OTHERWISE NOTED
ALL DIMENSIONS WITHOUT TOLERANCES ARE FOR REFERENCE ONLY.
PROPRIETARY ITEM EXCEPT FOR USES EXPRESSLY GRANTED IN WRITING, INFORMATION DISCLOSED HEREON IS CONFIDENTIAL AND ALL RIGHTS, PATENT AND OTHERWISE, ARE RESERVED BY SOUTHCO, INC.
PER ASME Y14.5M-1994

DESCRIPTION E5 CAM LATCH ASSEMBLY HVAC, SINGLE POINT
SIZE A3
SYSTEM NX
DWG NO. J-E5-6A
DRAWN BY MJS
DATE 01JUL2019
SCALE 1:1
SHEET 3 OF 8

southco[®]
CONNECT • CREATE • INNOVATE

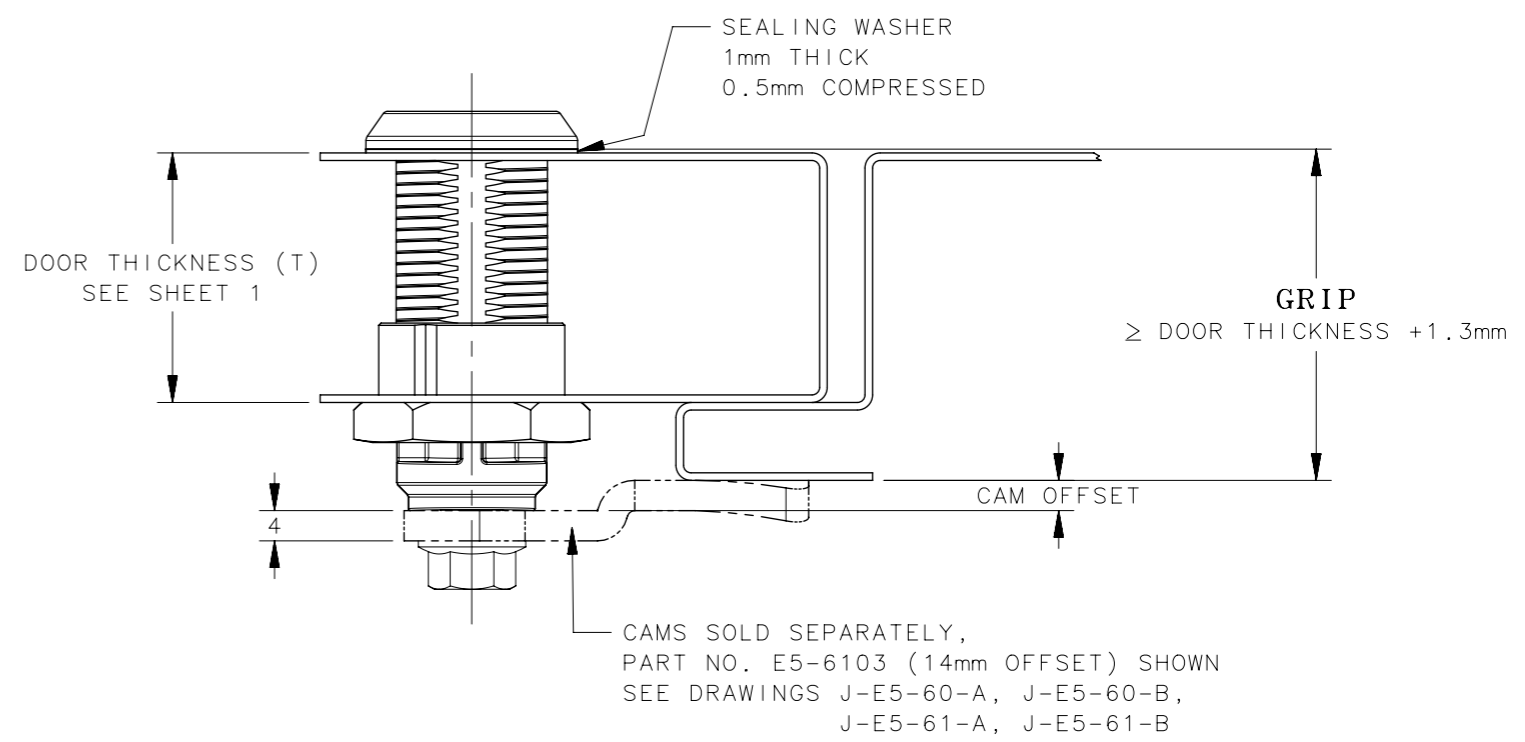
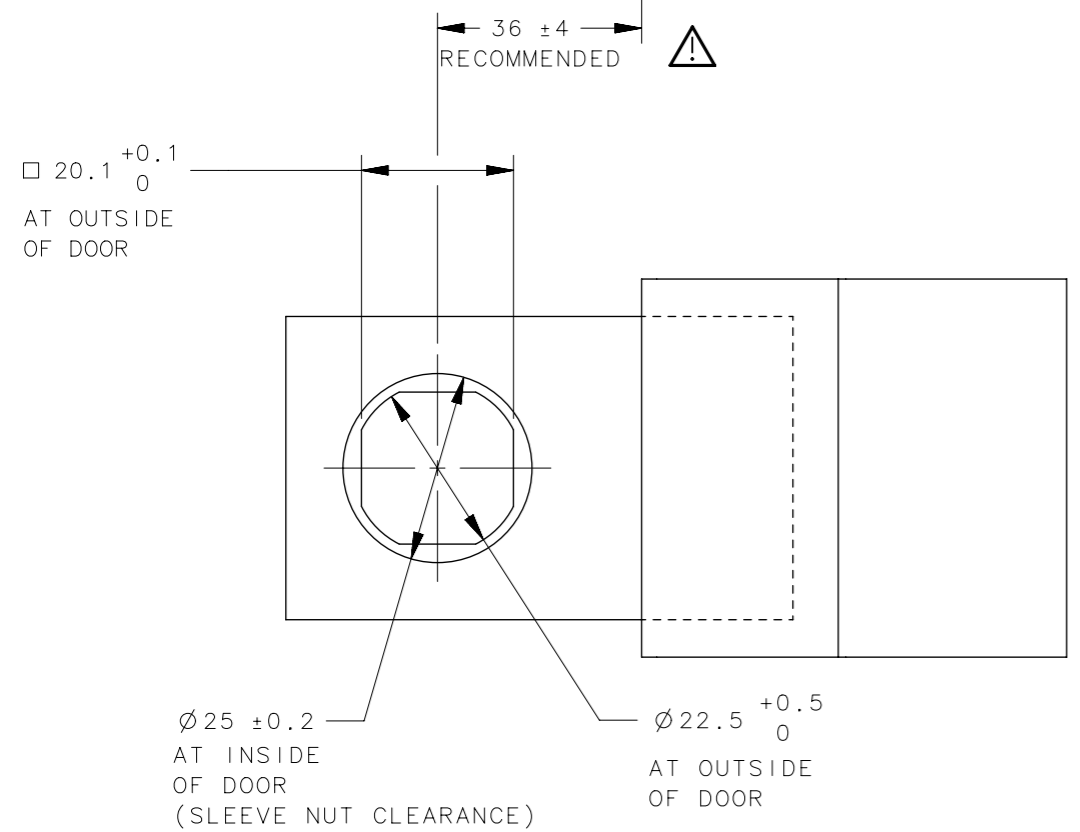
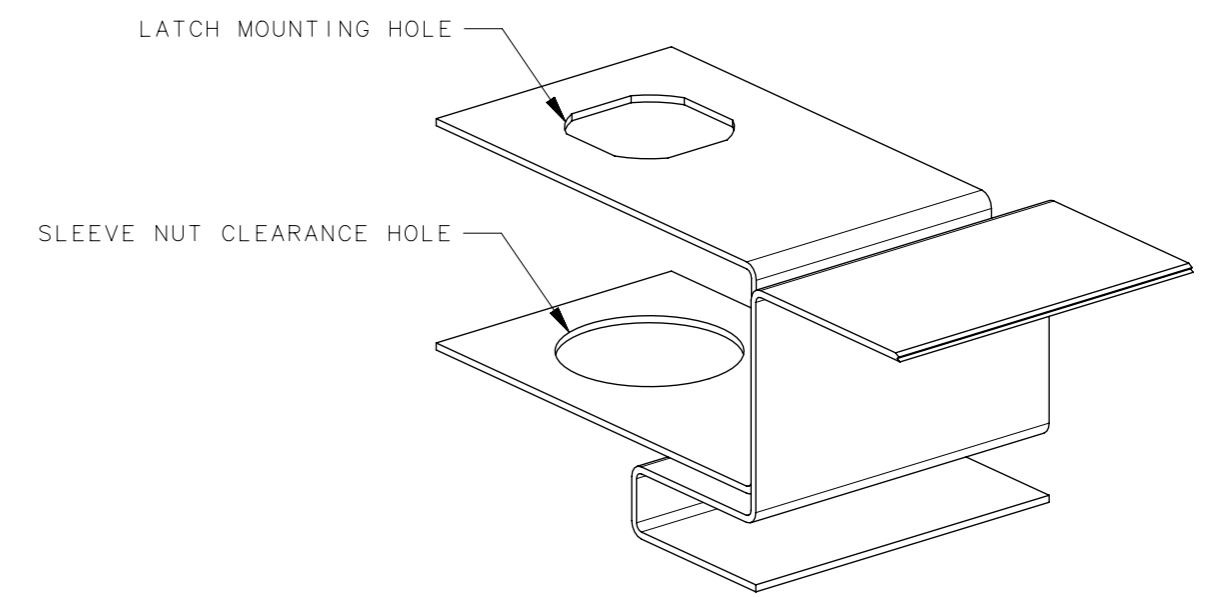
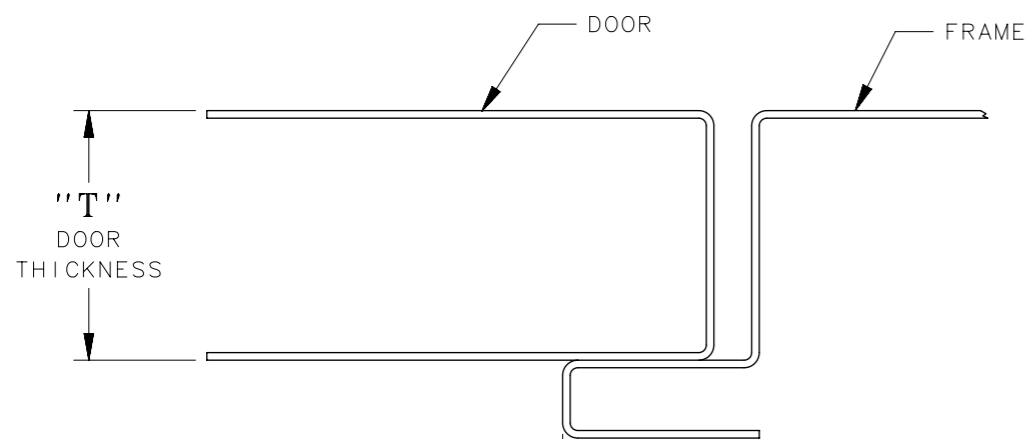
E5 CAM LATCH ASSEMBLY
HVAC, SINGLE POINT

SIZE A3	SYSTEM NX	DWG NO. J-E5-6A
DRAWN BY MJS	DATE 01JUL2019	SCALE 1:1
SHEET 3 OF 8		

REVISION HISTORY			
REV	DATE	BY	DESCRIPTION
D	21JUL2020	MJS/TMS	PRN: P2020-1338

DOOR PREPARATION

18mm - 51mm DOOR THICKNESS



DOOR PREPARATION

18mm - 51mm DOOR THICKNESS

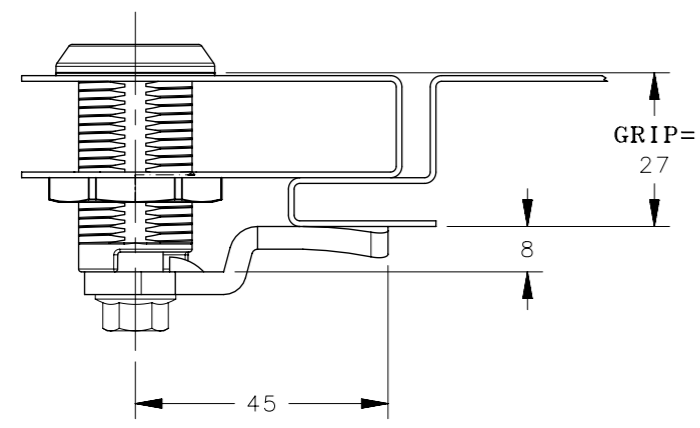
D	(T) DOOR THICKNESS
1	1 - 18
2	1 - 18
3	18 - 33
4	18 - 33
5	33 - 51

IMPORTANT INSTALLATION INFORMATION

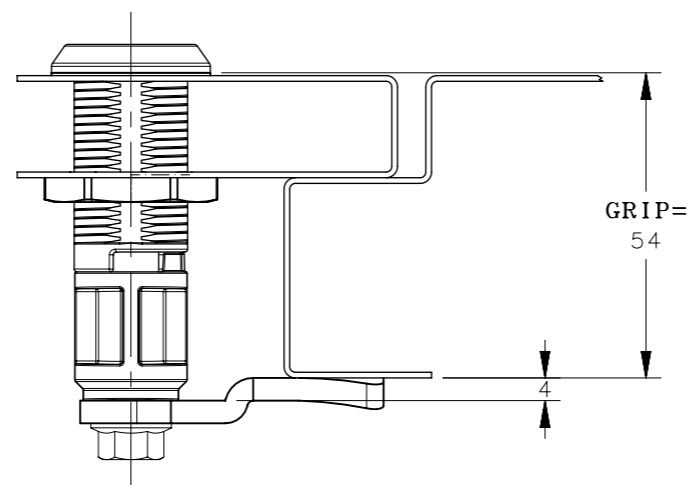
ADHERANCE TO THE RECOMMENDED DIMENSION IS CRITICAL TO THE PROPER FUNCTIONING OF THE E5 CAM LATCH.

CPB NUMBER 2017-1147		THIRD ANGLE PROJECTION		southco [®] CONNECT • CREATE • INNOVATE	
		MILLIMETERS [IN]			
		TOLERANCES UNLESS OTHERWISE NOTED		DESCRIPTION E5 CAM LATCH ASSEMBLY HVAC, SINGLE POINT	
PROPRIETARY ITEM <small>EXCEPT FOR USES EXPRESSLY GRANTED IN WRITING, INFORMATION DISCLOSED HEREON IS CONFIDENTIAL AND ALL RIGHTS, PATENT AND OTHERWISE, ARE RESERVED BY SOUTHCO, INC.</small>		ALL DIMENSIONS WITHOUT TOLERANCES ARE FOR REFERENCE ONLY.		SIZE A3	SYSTEM NX
PER ASME Y14.5M-1994		DRAWN BY MJS		DATE 01JUL2019	DWG NO. J-E5-6A
		SCALE 1:1		SHEET 4 OF 8	

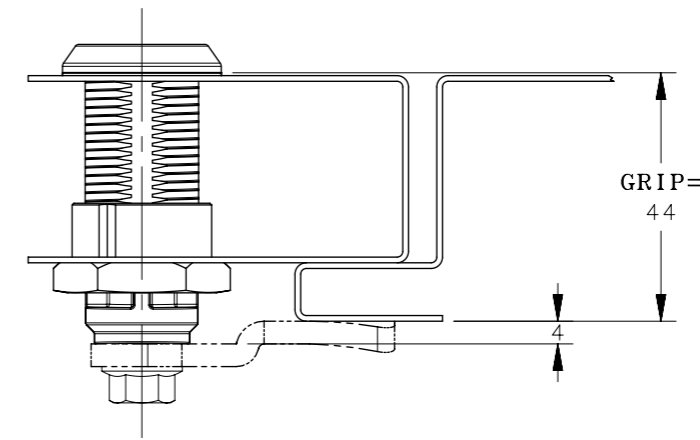
REVISION HISTORY			
REV	DATE	BY	DESCRIPTION
D	21JUL2020	MJS/TMS	PRN: P2020-1338



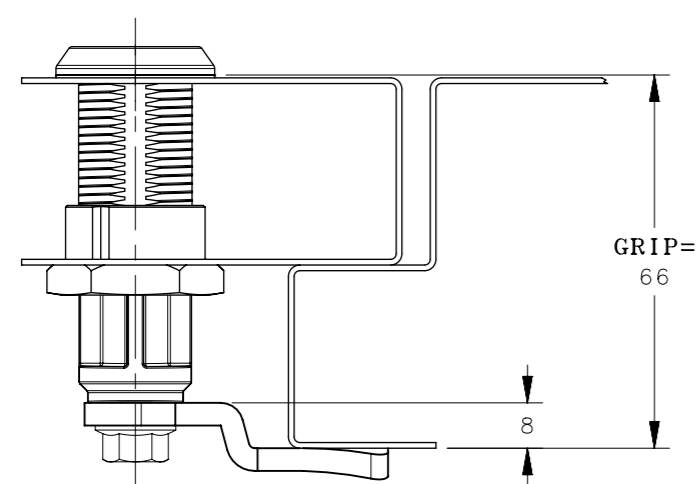
PART NUMBER: E5-6A-WWF-UU1
CAM E5-6006 SHOWN



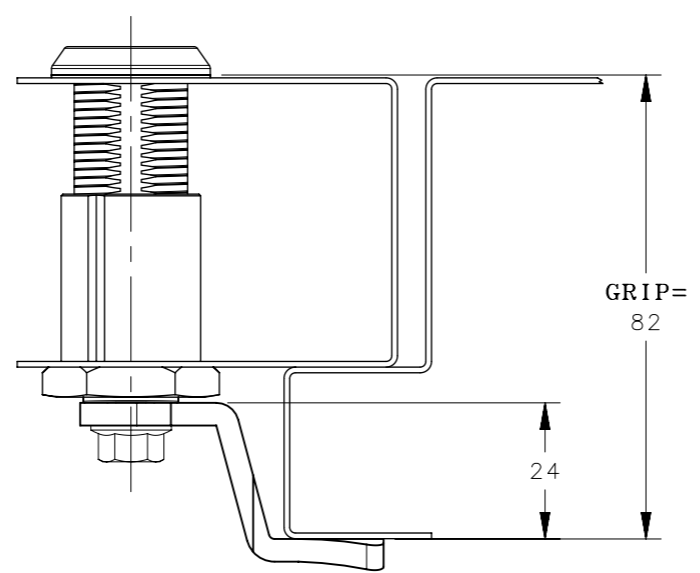
PART NUMBER: E5-6A-WWF-UU2
CAM E5-6108 SHOWN



PART NUMBER: E5-6A-WWF-UU3
CAM E5-6108 SHOWN



PART NUMBER: E5-6A-WWF-UU4
CAM E5-6114 SHOWN



PART NUMBER: E5-6A-WWF-UU5
CAM E5-6122 SHOWN

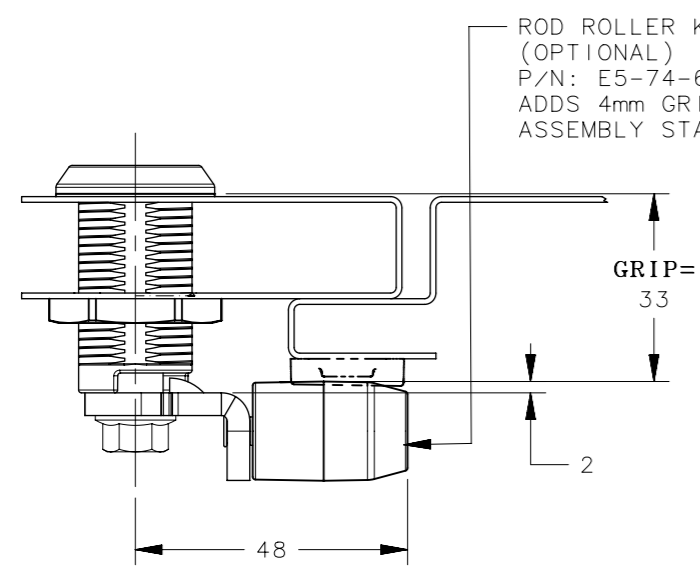
CAM SELECTION TABLE - SOLD SEPARATELY									
E5-6A-WWF-UU1		E5-6A-WWF-UU2		E5-6A-WWF-UU3		E5-6A-WWF-UU4		E5-6A-WWF-UU5	
CAM PART NO. E5-60YY		CAM PART NO. E5-61YY		CAM PART NO. E5-61YY		CAM PART NO. E5-61YY		CAM PART NO. E5-61YY	
YY	GRIP	YY	GRIP	YY	GRIP	YY	GRIP	YY	GRIP
28	5mm	08	54mm	28	18mm	14	66mm	25	34mm
27	7mm	09	56mm	27	20mm	15	68mm	24	36mm
26	9mm	10	58mm	26	22mm	16	70mm	23	38mm
25	11mm	11	60mm	25	24mm	17	72mm	01	40mm
24	13mm	12	62mm	24	26mm	18	74mm	02	42mm
23	15mm	13	64mm	23	28mm	19	76mm	03	44mm
01	17mm	14	66mm	01	30mm	20	78mm	04	46mm
02	19mm	15	68mm	02	32mm	21	80mm	05	48mm
03	21mm	16	70mm	03	34mm	22	82mm	06	50mm
04	23mm	17	72mm	04	36mm	-	-	07	52mm
05	25mm	18	74mm	05	38mm	-	-	08	54mm
06	27mm	19	76mm	06	40mm	-	-	09	56mm
07	29mm	20	78mm	07	42mm	-	-	10	58mm
08	31mm	21	80mm	08	44mm	-	-	11	60mm
09	33mm	22	82mm	09	46mm	-	-	12	62mm
10	35mm	-	-	10	48mm	-	-	13	64mm
11	37mm	-	-	11	50mm	-	-	14	66mm
12	39mm	-	-	12	52mm	-	-	15	68mm
13	41mm	-	-	13	54mm	-	-	16	70mm
14	43mm	-	-	14	56mm	-	-	17	72mm
15	45mm	-	-	15	58mm	-	-	18	74mm
16	47mm	-	-	16	60mm	-	-	19	76mm
17	49mm	-	-	17	62mm	-	-	20	78mm
18	51mm	-	-	18	64mm	-	-	21	80mm
19	53mm	-	-	19	66mm	-	-	22	82mm

CPB NUMBER 2017-1147	THIRD ANGLE PROJECTION	 CONNECT • CREATE • INNOVATE
SURFACE AREA mm ²	MILLIMETERS [IN]	
VOLUME mm ³	TOLERANCES UNLESS OTHERWISE NOTED	DESCRIPTION CAM LATCH FLAT CAM OPTIONS
PROPRIETARY ITEM EXCEPT FOR USES EXPRESSLY GRANTED IN WRITING, INFORMATION DISCLOSED HEREON IS CONFIDENTIAL AND ALL RIGHTS, PATENT AND OTHERWISE, ARE RESERVED BY SOUTHCO, INC.	ALL DIMENSIONS WITHOUT TOLERANCES ARE FOR REFERENCE ONLY.	SIZE A3
PER ASME Y14.5M-1994	SYSTEM NX	DWG NO. J-E5-6A
	DRAWN BY MJS	DATE 01JUL2019
		SCALE 1:1
		SHEET 5 OF 8

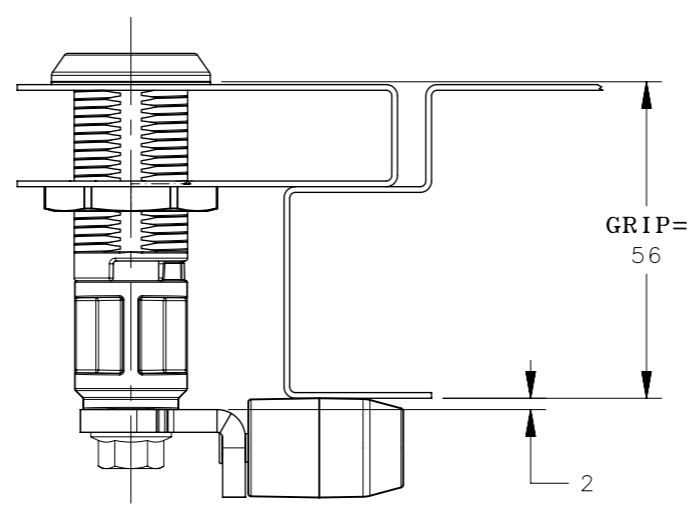
ADDITIONAL FLAT CAM INFORMATION

PLEASE REFER TO SOUTHCO TRADE DRAWINGS
J-E5-60-A, J-E5-60-B, J-E5-61-A AND J-E5-61-B.

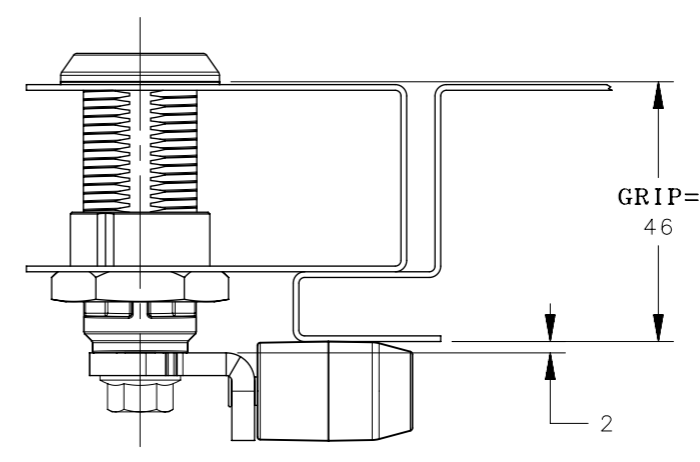
REVISION HISTORY			
REV	DATE	BY	DESCRIPTION
D	21JUL2020	MJS/TMS	PRN: P2020-1338



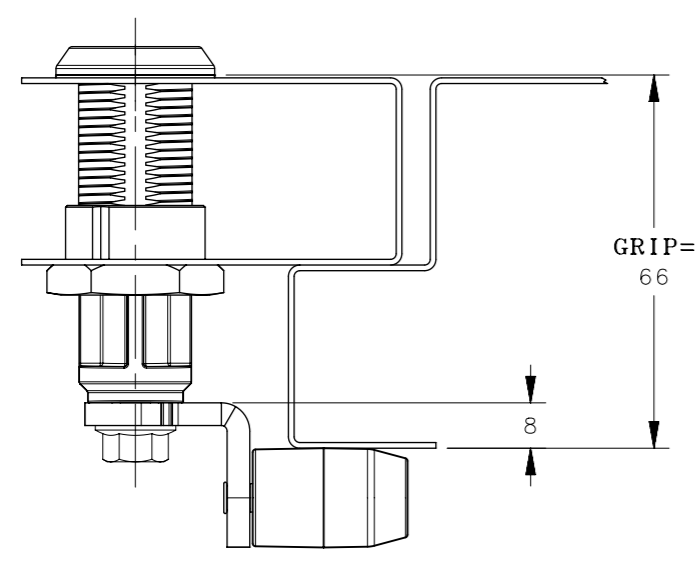
PART NUMBER: E5-6A-WWF-UU1
ROLLER CAM E5-7009 SHOWN



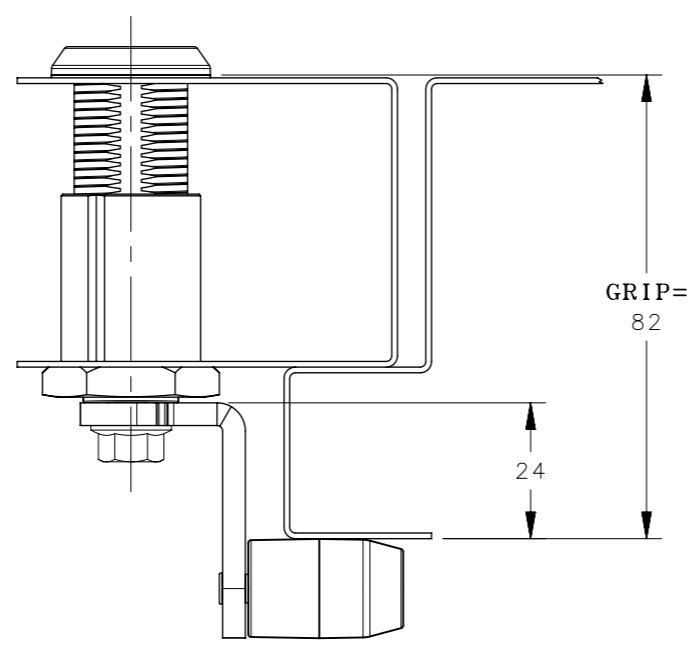
PART NUMBER: E5-6A-WWF-UU2
ROLLER CAM E5-7109 SHOWN



PART NUMBER: E5-6A-WWF-UU3
ROLLER CAM E5-7109 SHOWN



PART NUMBER: E5-6A-WWF-UU4
ROLLER CAM E5-7114 SHOWN



PART NUMBER: E5-6A-WWF-UU5
ROLLER CAM E5-7122 SHOWN

ROLLER CAM SELECTION TABLE - SOLD SEPARATELY									
E5-6A-WWF-UU1		E5-6A-WWF-UU2		E5-6A-WWF-UU3		E5-6A-WWF-UU4		E5-6A-WWF-UU5	
CAM PART NO. E5-70YY		CAM PART NO. E5-71YY		CAM PART NO. E5-71YY		CAM PART NO. E5-71YY		CAM PART NO. E5-71YY	
YY	GRIP	YY	GRIP	YY	GRIP	YY	GRIP	YY	GRIP
-	5mm	-	54mm	18	18mm	14	66mm	15	34mm
-	7mm	09	56mm	17	20mm	15	68mm	14	36mm
-	9mm	10	58mm	16	22mm	16	70mm	13	38mm
-	11mm	11	60mm	15	24mm	17	72mm	12	40mm
-	13mm	12	62mm	14	26mm	18	74mm	11	42mm
-	15mm	13	64mm	13	28mm	19	76mm	10	44mm
-	17mm	14	66mm	12	30mm	20	78mm	09	46mm
-	19mm	15	68mm	11	32mm	21	80mm	-	48mm
-	21mm	16	70mm	10	34mm	22	82mm	-	50mm
-	23mm	17	72mm	09	36mm	-	-	-	52mm
-	25mm	18	74mm	-	38mm	-	-	-	54mm
-	27mm	19	76mm	-	40mm	-	-	09	56mm
-	29mm	20	78mm	-	42mm	-	-	10	58mm
-	31mm	21	80mm	-	44mm	-	-	11	60mm
09	33mm	22	82mm	09	46mm	-	-	12	62mm
10	35mm	-	-	10	48mm	-	-	13	64mm
11	37mm	-	-	11	50mm	-	-	14	66mm
12	39mm	-	-	12	52mm	-	-	15	68mm
13	41mm	-	-	13	54mm	-	-	16	70mm
14	43mm	-	-	14	56mm	-	-	17	72mm
15	45mm	-	-	15	58mm	-	-	18	74mm
16	47mm	-	-	16	60mm	-	-	19	76mm
17	49mm	-	-	17	62mm	-	-	20	78mm
18	51mm	-	-	18	64mm	-	-	21	80mm
19	53mm	-	-	19	66mm	-	-	22	82mm

CPB NUMBER 2017-1147

THIRD ANGLE PROJECTION

MILLIMETERS [IN]

TOLERANCES UNLESS OTHERWISE NOTED

ALL DIMENSIONS WITHOUT TOLERANCES ARE FOR REFERENCE ONLY.

PROPRIETARY ITEM EXCEPT FOR USES EXPRESSLY GRANTED IN WRITING, INFORMATION DISCLOSED HEREON IS CONFIDENTIAL AND ALL RIGHTS, PATENT AND OTHERWISE, ARE RESERVED BY SOUTHCO, INC.

PER ASME Y14.5M-1994

southco
CONNECT • CREATE • INNOVATE

DESCRIPTION
CAM LATCH
ROLLER CAM OPTIONS

SIZE A3 SYSTEM NX DWG NO. J-E5-6A

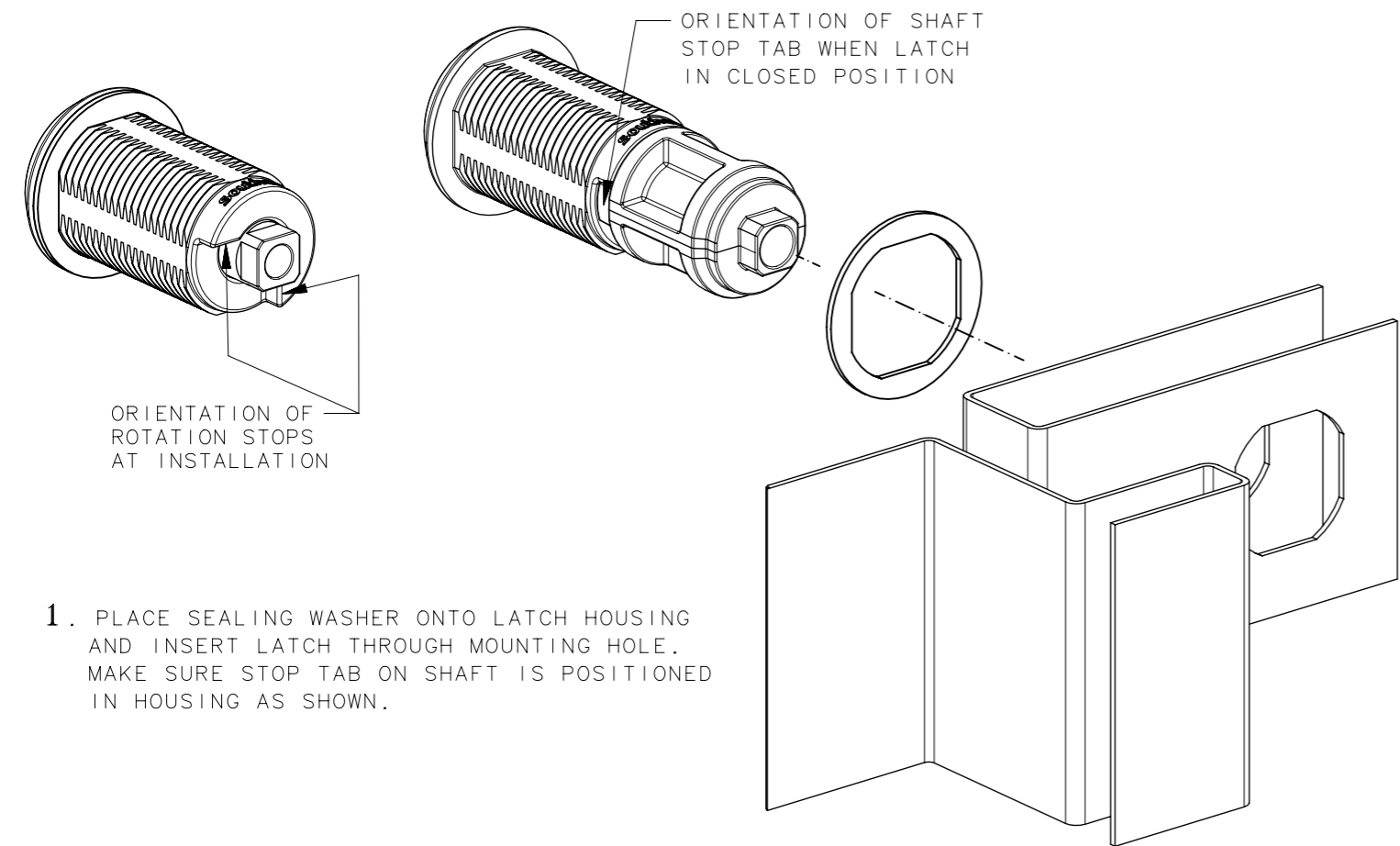
DRAWN BY MJS DATE 01JUL2019 SCALE 1:1 SHEET 6 OF 8

ADDITIONAL ROLLER CAM INFORMATION
PLEASE REFER TO SOUTHCO TRADE DRAWINGS
J-E5-70 AND J-E5-71.

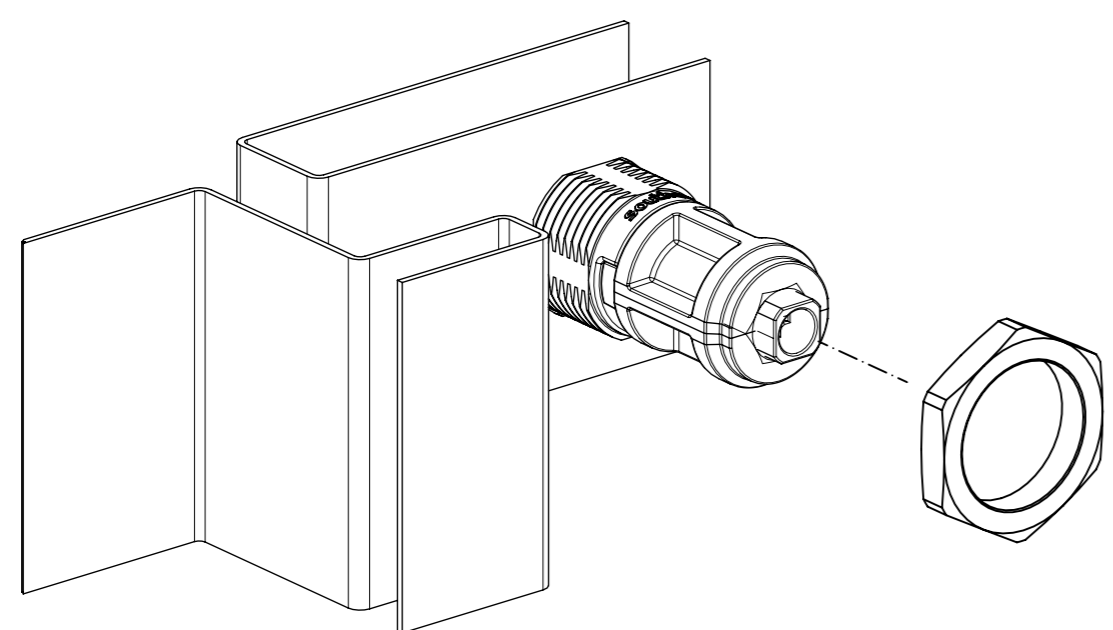
REVISION HISTORY			
REV	DATE	BY	DESCRIPTION
D	21JUL2020	MJS/TMS	PRN: P2020-1338

CAM LATCH ASSEMBLY INSTALLATION

1mm - 18mm DOOR THICKNESS

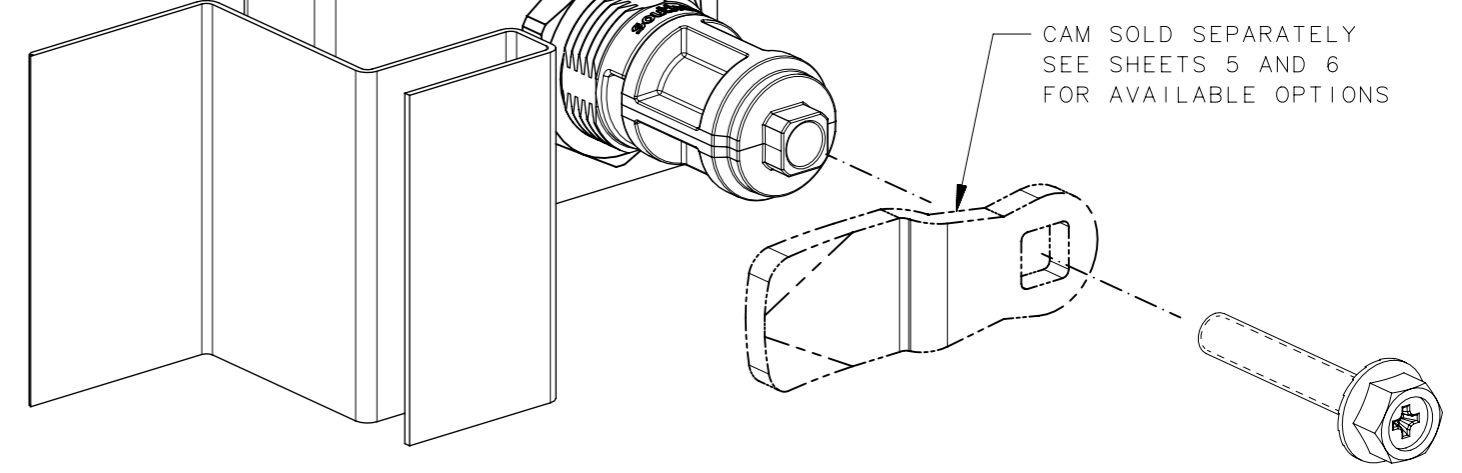
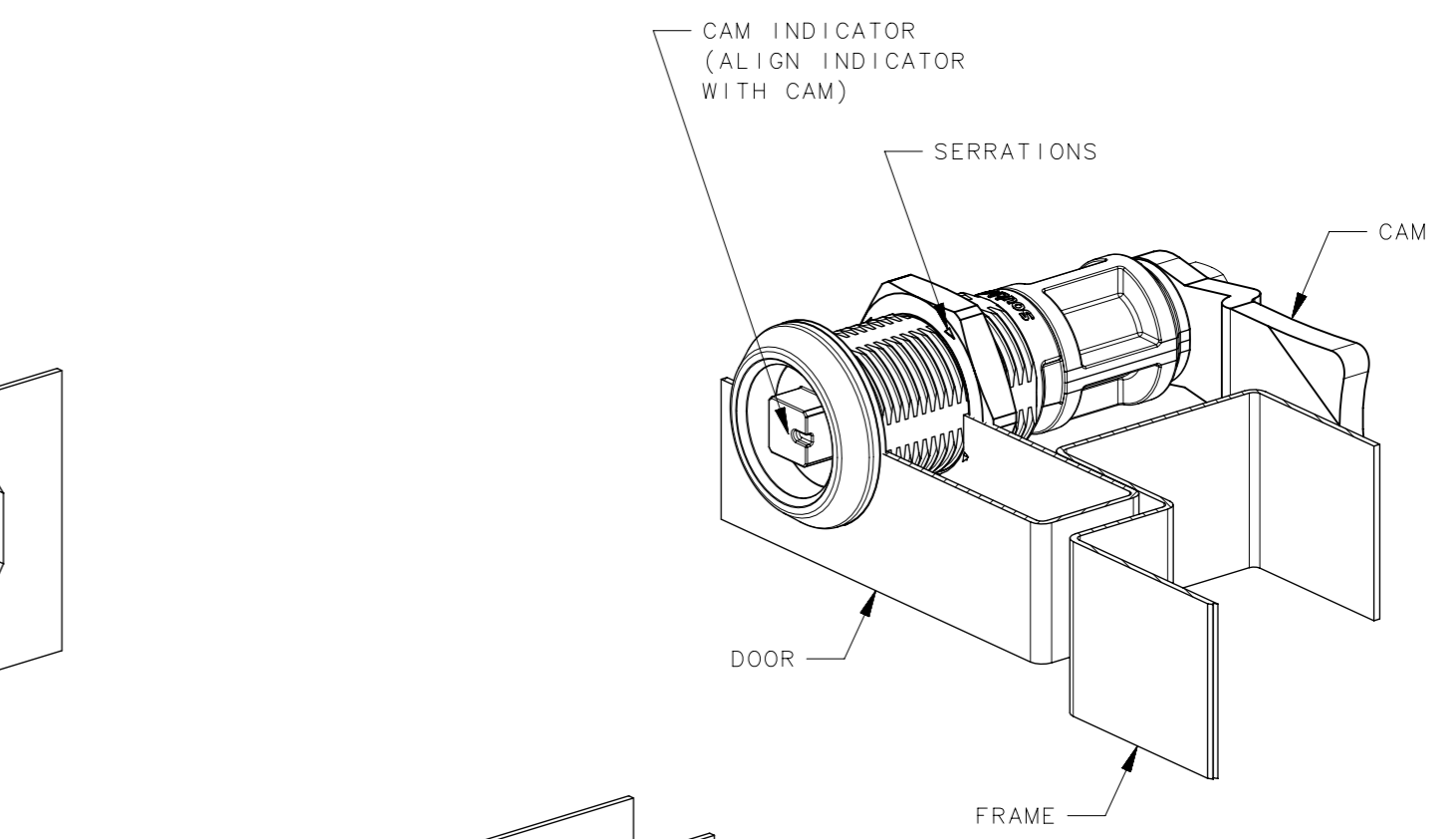


1. PLACE SEALING WASHER ONTO LATCH HOUSING AND INSERT LATCH THROUGH MOUNTING HOLE. MAKE SURE STOP TAB ON SHAFT IS POSITIONED IN HOUSING AS SHOWN.



2. THREAD HEX NUT ONTO HOUSING TO SECURE LATCH ASSEMBLY TO PANEL. TIGHTEN TO 10 N-m MAX.

NOTE: LATCHES USING ROLLER CAMS LISTED ON SHEET 6 USE THE SAME INSTALLATION METHOD.



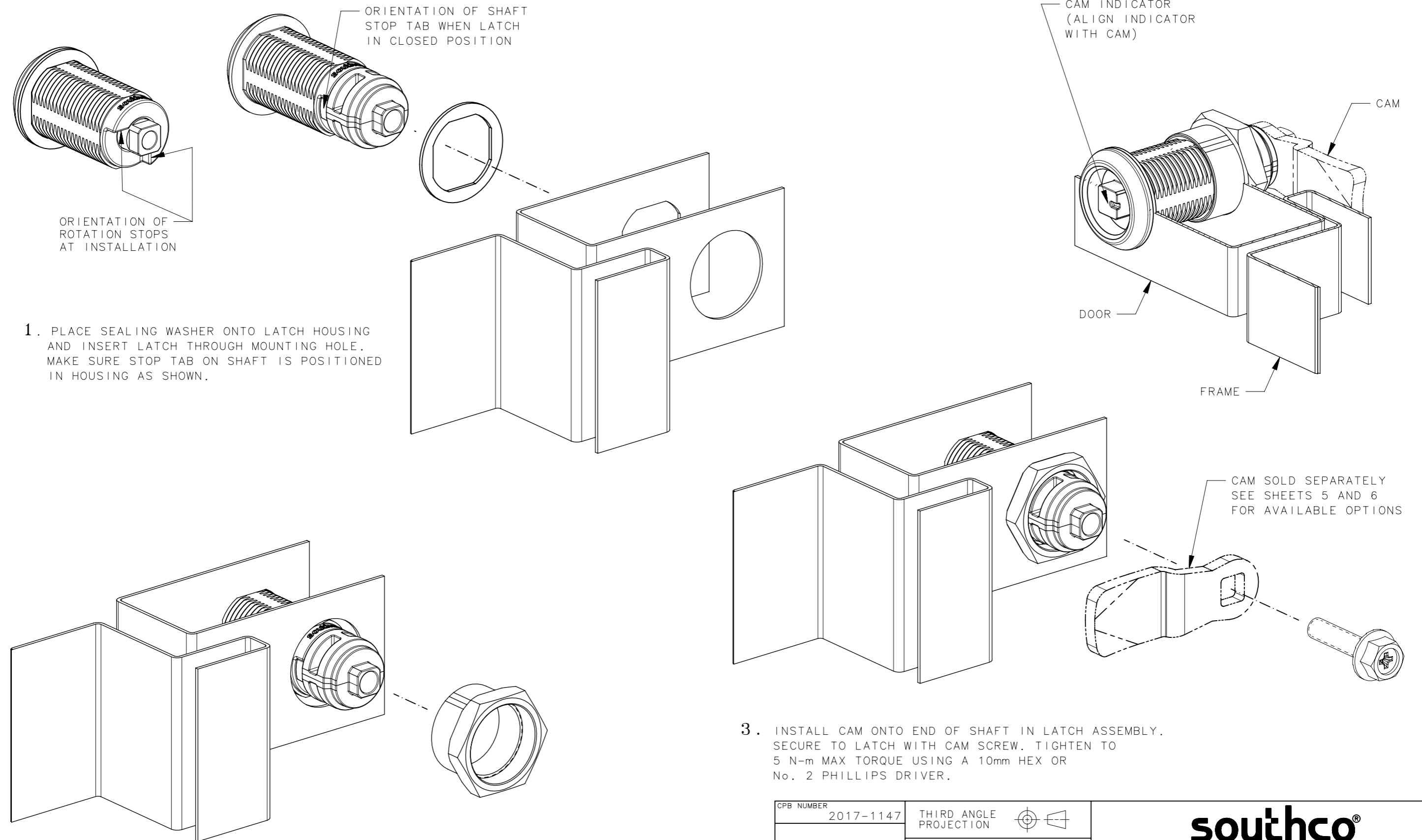
3. INSTALL CAM ONTO END OF SHAFT IN LATCH ASSEMBLY. SECURE TO LATCH WITH CAM SCREW. TIGHTEN TO 5 N-m MAX TORQUE USING A 10mm HEX OR No. 2 PHILLIPS DRIVER.

CPB NUMBER 2017-1147	THIRD ANGLE PROJECTION	southco [®] CONNECT • CREATE • INNOVATE		
	MILLIMETERS [IN]			
	TOLERANCES UNLESS OTHERWISE NOTED	DESCRIPTION CAM LATCH LATCH AND CAM INSTALLATION		
	ALL DIMENSIONS WITHOUT TOLERANCES ARE FOR REFERENCE ONLY.	SIZE A3	SYSTEM NX	DWG NO. J-E5-6A
PROPRIETARY ITEM <small>EXCEPT FOR USES EXPRESSLY GRANTED IN WRITING, INFORMATION DISCLOSED HEREON IS CONFIDENTIAL AND ALL RIGHTS, PATENT AND OTHERWISE, ARE RESERVED BY SOUTHCO, INC.</small>	PER ASME Y14.5M-1994	DRAWN BY MJS	DATE 01JUL2019	SCALE 1:1
				SHEET 7 OF 8

REVISION HISTORY			
REV	DATE	BY	DESCRIPTION
D	21JUL2020	MJS/TMS	PRN: P2020-1338

CAM LATCH ASSEMBLY INSTALLATION

18mm - 51mm DOOR THICKNESS



1. PLACE SEALING WASHER ONTO LATCH HOUSING AND INSERT LATCH THROUGH MOUNTING HOLE. MAKE SURE STOP TAB ON SHAFT IS POSITIONED IN HOUSING AS SHOWN.

2. THREAD HEX NUT ONTO HOUSING TO SECURE LATCH ASSEMBLY TO PANEL. TIGHTEN TO 10 N-m MAX.

NOTE: LATCHES USING ROLLER CAMS LISTED ON SHEET 6 USE THE SAME INSTALLATION METHOD.

3. INSTALL CAM ONTO END OF SHAFT IN LATCH ASSEMBLY. SECURE TO LATCH WITH CAM SCREW. TIGHTEN TO 5 N-m MAX TORQUE USING A 10mm HEX OR No. 2 PHILLIPS DRIVER.

CPB NUMBER 2017-1147	THIRD ANGLE PROJECTION	southco [®] CONNECT • CREATE • INNOVATE	
	MILLIMETERS [IN]		
	TOLERANCES UNLESS OTHERWISE NOTED	DESCRIPTION CAM LATCH LATCH AND CAM INSTALLATION	
	ALL DIMENSIONS WITHOUT TOLERANCES ARE FOR REFERENCE ONLY.	SIZE A3	SYSTEM NX
PROPRIETARY ITEM <small>EXCEPT FOR USES EXPRESSLY GRANTED IN WRITING, INFORMATION DISCLOSED HEREON IS CONFIDENTIAL AND ALL RIGHTS, PATENT AND OTHERWISE, ARE RESERVED BY SOUTHCO, INC.</small>	PER ASME Y14.5M-1994	DWG NO. J-E5-6A	SCALE 1:1
		DRAWN BY MJS	DATE 01JUL2019
			SHEET 8 OF 8