

Zwei L STAINLESS STEEL KNOB



ZL-1909

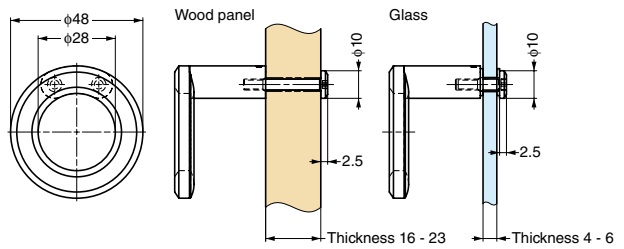
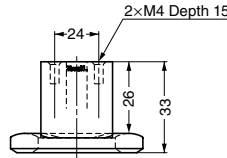


Features

- Made of highly corrosion resistant SUS316
- Ultrapremium Zwei L finish. Zwei L finish: Using top class polishing technology, these products combine the elegance of Satin with the deep glow of a Mirror.
- Can be used on either wood or tempered glass.
- XL-2105 is a hook with the same type of design.

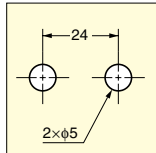
Parts Included

- For wooden doors : 16 - 23 mm : Screw M4x28 (SUS)
- For glass doors : 4, 5, 6 mm : Screw M4x16 (SUS)
- Gasket

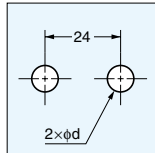


Cut Out Dimensions

Wooden doors



Glass doors



Thickness 4, 5 : d=5
Thickness 6 : d=6

| Item Code | Item Name | Material | Finish | Weight |
|-------------|-----------|--------------------------|---------------|--------|
| 100-022-171 | ZL-1909 | Stainless Steel (SUS316) | Zwei L Finish | 97 g |

Zwei L STAINLESS STEEL KNOB



ZL-1907-24

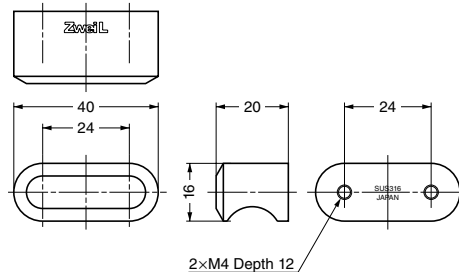


Features

- Made of highly corrosion resistant SUS316
- Ultrapremium Zwei L finish. Zwei L finish: Using top class polishing technology, these products combine the elegance of Satin with the deep glow of a Mirror.
- Can be used on either wood or tempered glass.
- XL-1504 is a door knob with the same type of design.

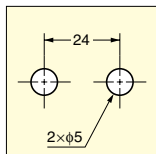
Parts Included

- For wooden doors : 16 - 23 mm : Screw M4x28 (SUS)
- For glass doors : 4, 5, 6 mm : Screw M4x16 (SUS)
- Gasket

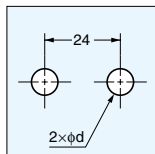


Cut Out Dimensions

Wooden doors



Glass doors



Thickness 4, 5 : d=5
Thickness 6 : d=6

| Item Code | Item Name | Material | Finish | Weight |
|-------------|------------|--------------------------|---------------|--------|
| 100-011-016 | ZL-1907-24 | Stainless Steel (SUS316) | Zwei L Finish | 78 g |