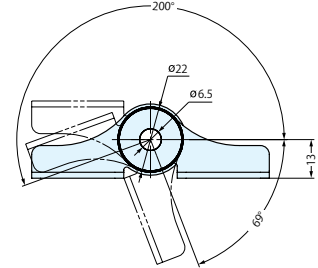
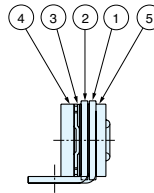
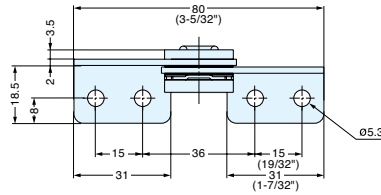


TORQUE HINGE (W/CABLE HOLE)



HG-TA45H



- Hole in hinge knuckle allows for management of cable wire.
- Passed 50,000 open/close cycle test.

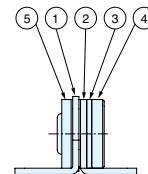
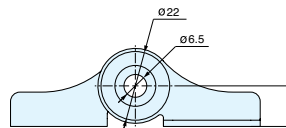
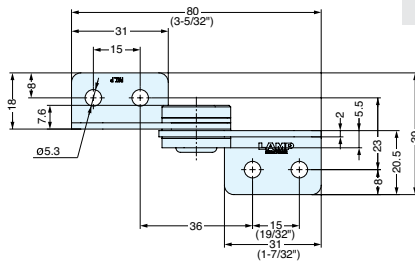
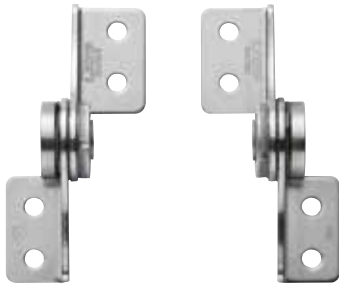
No	Part Name	Material	Finish
①	Hinge A	430 Stainless Steel	Polished
②	Hinge B		
③	Spring Washer	Steel	-
④	Knuckle	303 Stainless Steel	
⑤	Washer	430 Stainless Steel	

Item No.	Type	Torque per piece (kgf-cm)	Weight (g)	Box (pcs)	Carton (pcs)
HG-TA45HR	Right	45.9 (39.8 lbs-in) ± 20%	60	20	160
HG-TA45HL	Left				

TORQUE HINGE (W/CABLE HOLE)



HG-TC45H



- Hole in hinge knuckle allows for management of cable wire.
- Passed 50,000 open/close cycle test.

No	Part Name	Material	Finish
①	Hinge A	430 Stainless Steel	Polished
②	Hinge B		
③	Spring Washer	Steel	-
④	Knuckle	303 Stainless Steel	
⑤	Washer	430 Stainless Steel	

Item No.	Type	Torque per piece (kgf-cm)	Weight (g)	Box (pcs)	Carton (pcs)
HG-TC45HR	Right	45.9 (39.8 lbs-in) ± 20%	60	20	160
HG-TC45HL	Left				