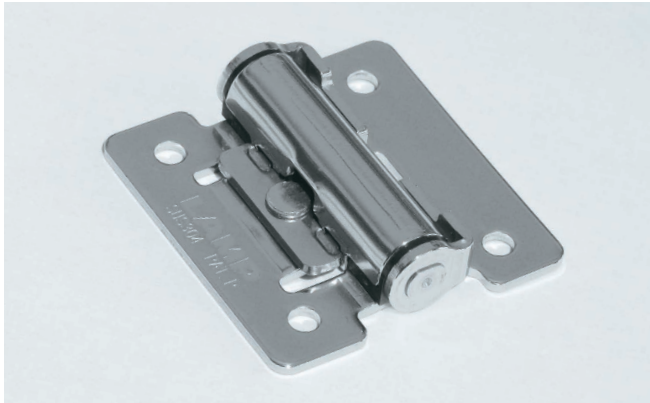


# TORQUE HINGE



# HG-TS



### Features

- Hinge has free-stop between 0 - 180°: It holds its position at any desired angle
- Grease free
- Successfully passed 20,000 open/close cycles in a private test.
- Simplified internal structure
- Initial torque may vary -20 % - +40 %.

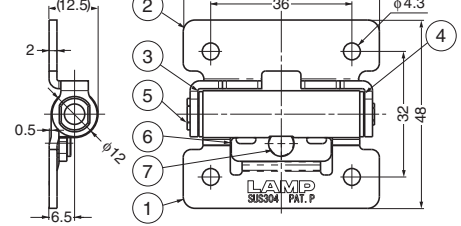
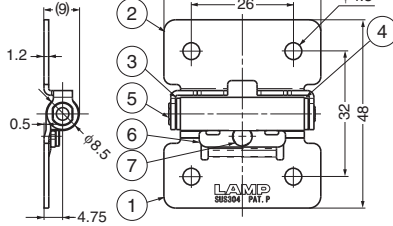
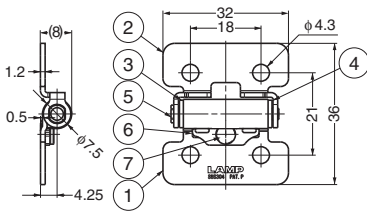
### Remarks

- Operating temperature : -10° - 50°
- Operating humidity : 90 % RH or less
- Recommended for use in pairs.

HG-TS03

HG-TS07

HG-TS15



Item Code	Item Name	Torque Moment (Per pair)		Weight	Box	Carton
170-018-501	HG-TS03	0.35 <sup>+40%</sup> <sub>-20%</sub> N·m	3.6 <sup>+40%</sup> <sub>-20%</sub> kgf·cm	15.0 g	50 pcs	500 pcs
170-018-502	HG-TS07	0.7 <sup>+40%</sup> <sub>-20%</sub> N·m	7.1 <sup>+40%</sup> <sub>-20%</sub> kgf·cm	27.5 g	50 pcs	500 pcs
170-018-503	HG-TS15	1.5 <sup>+40%</sup> <sub>-20%</sub> N·m	15.3 <sup>+40%</sup> <sub>-20%</sub> kgf·cm	64.1 g	20 pcs	200 pcs

No.	Part Name	Material	Finish/Colour
①	Body	Stainless Steel (SUS304)	Mirror
②	Base	Stainless Steel (SUS304)	Mirror
③	Fixing Tube L	Polyacetal (POM)	Black
④	Fixing Tube R	Polyacetal (POM)	Black
⑤	Shaft	Stainless Steel (SUS303)	-
⑥	Press Washer	Stainless Steel (SUS304)	Mirror
⑦	Pin	Stainless Steel	-

# CONCEALED TORQUE HINGE



# HG-TU



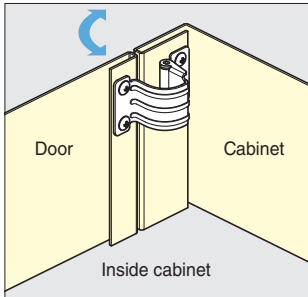
### Features

- Hinge has free stop: It holds its position at any desired angle
- Grease free
- Successfully passed 20,000 open/close cycles in a private test.
- Install on the back side of flap doors or doors for a clean appearance.
- Can be used in either horizontal and vertical applications.

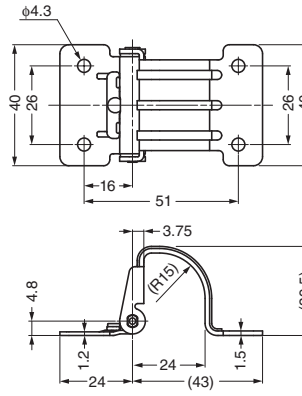
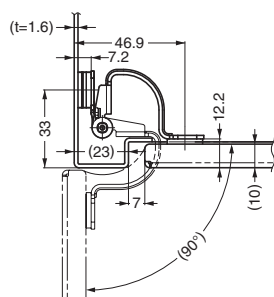
### Remarks

Recommended for use in pairs.

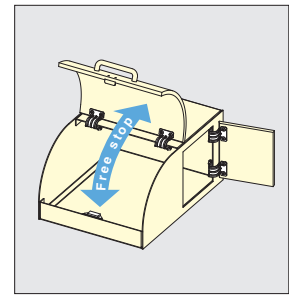
### Installation



### Dimension



### Application Example



Item Code	Item Name	Material	Finish	Torque Moment (Per piece)		Weight	Box	Carton
170-022-304	HG-TU03	Stainless Steel (SUS304)	Mirror	0.35 <sup>+40%</sup> <sub>-20%</sub> N·m	3.6 <sup>+40%</sup> <sub>-20%</sub> kgf·cm	50 g	20 pcs	200 pcs
170-022-305	HG-TU07	Stainless Steel (SUS304)	Mirror	0.7 <sup>+40%</sup> <sub>-20%</sub> N·m	7.1 <sup>+40%</sup> <sub>-20%</sub> kgf·cm	50 g	20 pcs	200 pcs