

TORQUE HINGE HG-TS



Free stop
Greaseless
 Passed 20,000 open/close private cycle test

- Sugatsune's patented technology reduces the number of parts for a cost-effective solution.
- Can be installed to aluminium frame.

[Specifications]

- Operating temperature: -10°C~50°C
- Operating humidity: 90%RH or less

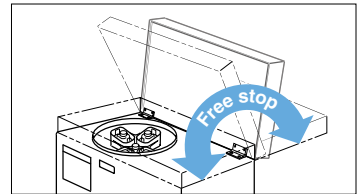
[Applications]

- Stereo equipment, FA equipment, and various automatic equipment

[Remarks]

- Be sure to read the "Cautions" 1.
- When installing, ensure that both hinge shafts are levelled and aligned.

[Application Example]



Selection Tool
Sasuga-kun
 Applicable Products
 Used for Product Selection & Simulation.
 Available on Web!

TORQUE HINGES

DAMPER HINGES

LIFT ASSIST HINGES

DETENT HINGES

CONCEALED HINGES

BUTT HINGES

PIANO HINGES

STEP HINGES

LIFT-OFF HINGES

PIVOT HINGES

SPRING HINGES

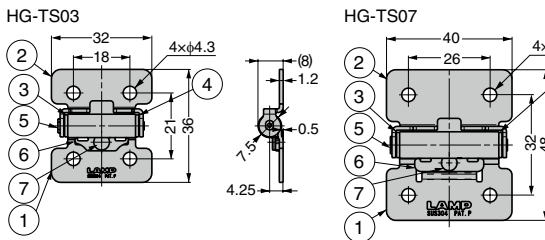
CLEAN ROOM HINGES

HINGES FOR ALUMINIUM FRAME

DROP HINGES

GLASS DOOR HINGES

SPECIAL HINGES



No.	Part Name	Material	Finish / Colour
①	Body	Stainless Steel (SUS304)	Barrel Polished
②	Base		
③	Rotating Tube L	POM	Black
④	Rotating Tube R		

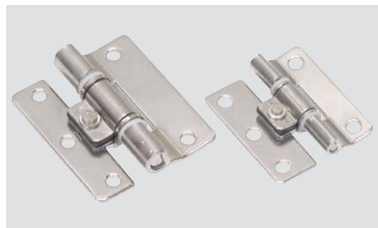
No.	Part Name	Material	Finish / Colour
⑤	Shaft	Stainless Steel (SUS303)	-
⑥	Press Washer	Stainless Steel (SUS304)	Barrel Polished
⑦	Pin	Stainless Steel	-

RohS	CAD	Item Code	Item Name	Torque N·m/pc**	Torque kgf·cm/pc**	Weight (g)	Box (pcs)	Carton (pcs)
✔	3D	170-018-501	HG-TS03	0.35 ^{+40%} / _{-20%}	3.6 ^{+40%} / _{-20%}	15.0	50	500
✔	3D	170-018-502	HG-TS07	0.7 ^{+40%} / _{-20%}	7.1 ^{+40%} / _{-20%}	27.5	50	500
✔	3D	170-018-503	HG-TS15	1.5 ^{+40%} / _{-20%}	15.3 ^{+40%} / _{-20%}	64.1	20	200

Refer to 1 : P.15.

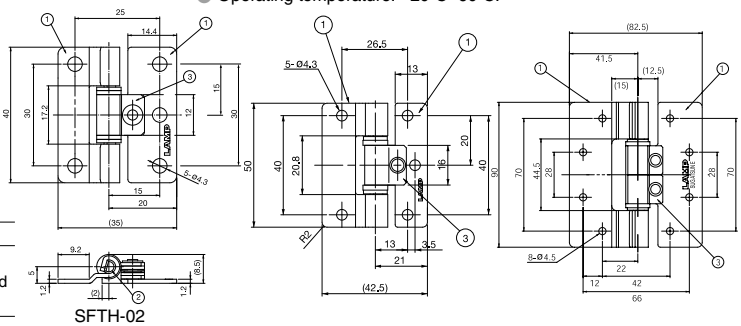
※ Since torque will decrease due to long-term use, temperature, humidity and other factors, it is set to a higher level at delivery.

STAINLESS STEEL TORQUE HINGE SFTH



- Hinge with friction torque holds lid/door in desired position.
- Stainless steel material ideal for corrosive environments.
- Operating temperature: -20°C~60°C.

No.	Part Name	Material	Finish
①	Body A	Stainless Steel (SUS304)	Polished
②	Shaft	Stainless Steel (SUS303)	
③	Body B	Stainless Steel (SUS301)	



RohS	CAD	Item Code	Item Name	Torque per piece	Weight (g)	Box (pcs)	Carton (pcs)
✔	3D	170-098-199	SFTH-02-5	5±1kgf·cm	21	50	500
✔	3D	170-098-198	SFTH-03-9	9±2kgf·cm	51	30	300
✔	3D	170-098-197	SFTH-03-19	19±2kgf·cm			
✔	3D	170-098-196	SFTH-05-35	35±5kgf·cm	195	10	100
✔	3D	170-098-200	SFTH-05-58	58±5kgf·cm			

DROP HINGES

GLASS DOOR HINGES

SPECIAL HINGES