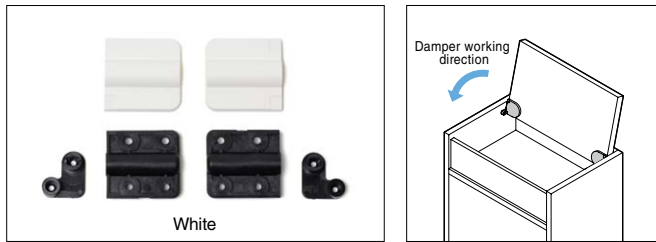


DAMPER HINGE

HINGES

DAMPER HINGE



Features

- Hinge with built-in damper.
- Damper unit works to close door softly. Smooth movement in opening direction.
- Mounted in sideboard and installed in inset door.
- Applicable into surface mount with Bracket UTZ11-BL.
- Cover hides mounting screws for clean appearance.
- Easy to cut out with a router.

Specification

Operation temperature: 0°C - 40°C

Application

Small covers for machine or wire manager.

Remarks

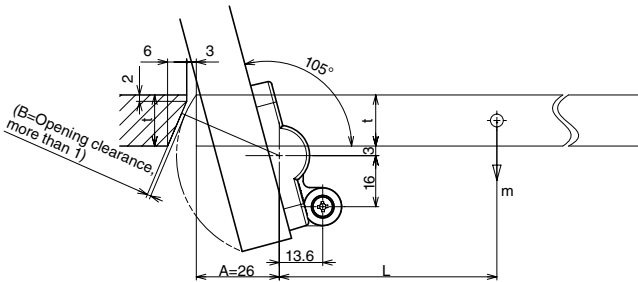
- Applicable moment of door: 0.05 - 0.4 N·m. Use a pair/door.
- When installing, ensure that both hinge shafts are levelled and aligned.
- Damper mechanism works when opening the lid by about 60° or more. Otherwise, damper may not work.
- Prepare stopper separately to keep the lid closed.
- Closing speed may change depending on operating temperature.

Sold Separately

Bracket for Surface Mount UKZ11-BL

Recommended Screw

Countersunk tapping screw 3, blind tapping screw 4

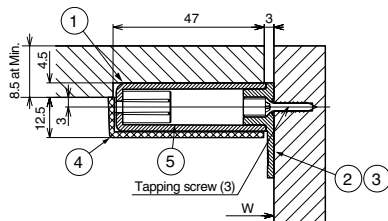


*t=16. Prepare more than 1 for Gap B of Opening clearance.

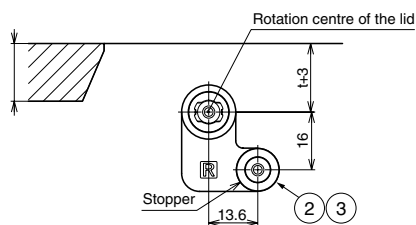


Installation

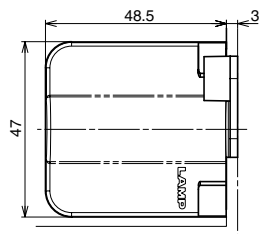
Cross-section View



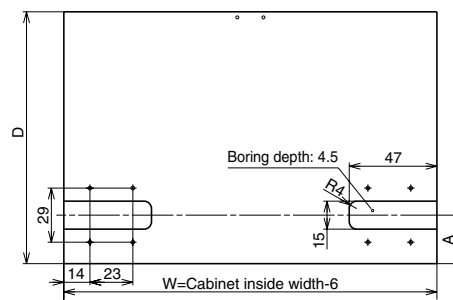
Installed Position of Bracket



Top View When closed door



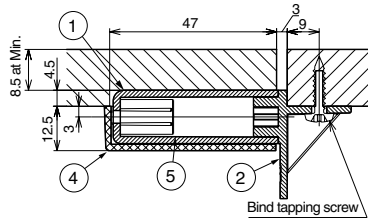
Cut Out Dimensions



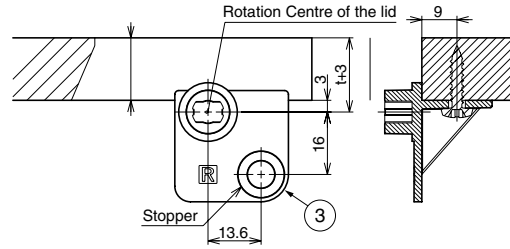
No.	Part Name	Material	Colour
①	Body	Polyacetal (POM)	Black
②	Bracket for side mount R	PBT	
③	Bracket for side mount L		
④	Cover	ABS	Black/White
⑤	Damper	-	-

Surface Mount Type (optional bracket UKZ11-BL for surface mount is required)

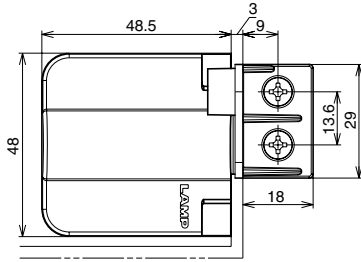
Cross-section View



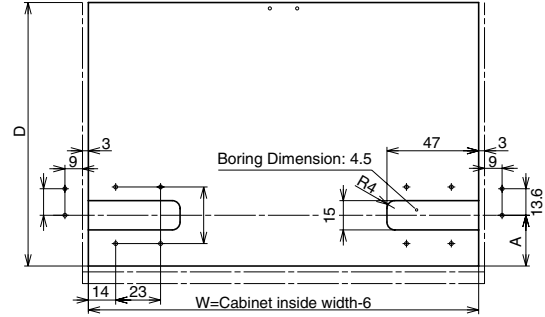
Installation Position of Bracket



Top View



Cut Out Dimensions



No.	Part Name	Material	Colour
①	Body	Polyacetal (POM)	Black
②	Bracket for sidemount R	PBT	
③	Bracket for sidemount L		
④	Cover	ABS	Black/White
⑤	Damper	-	-

Hinge

Sold by set.

CAD	Item Code	Item Name	Colour	Torque N-m/pair	Torque kgf-cm/pair	Opening Angle	Weight (g)	Box (set)	Carton (set)
	170-041-206	HG-JHM11-1BL	Black	0.05 – 0.1	0.51 – 1.02	105°	43.9	25	275
	170-041-207	HG-JHM11-1WT	White						
	170-041-208	HG-JHM11-2BL	Black						
	170-041-209	HG-JHM11-2WT	White						
	170-041-210	HG-JHM11-3BL	Black	0.2 – 0.29	2.04 – 2.96		46.8		
	170-041-211	HG-JHM11-3WT	White						
	170-041-212	HG-JHM11-4BL	Black	0.29 – 0.4	2.96 – 4.08				
	170-041-213	HG-JHM11-4WT	White						



Bracket for Surface Mount

CAD	Item Code	Item Name	Colour	Box (set)	Carton (set)
	170-041-218	UKZ11-BL	Black	50	500